



## 21 Southview, The Alley, Stedham, West Sussex, GU29 0NN

A fantastic opportunity to renovate and refurbish a character cottage in the heart of a sought after location overlooking the village green



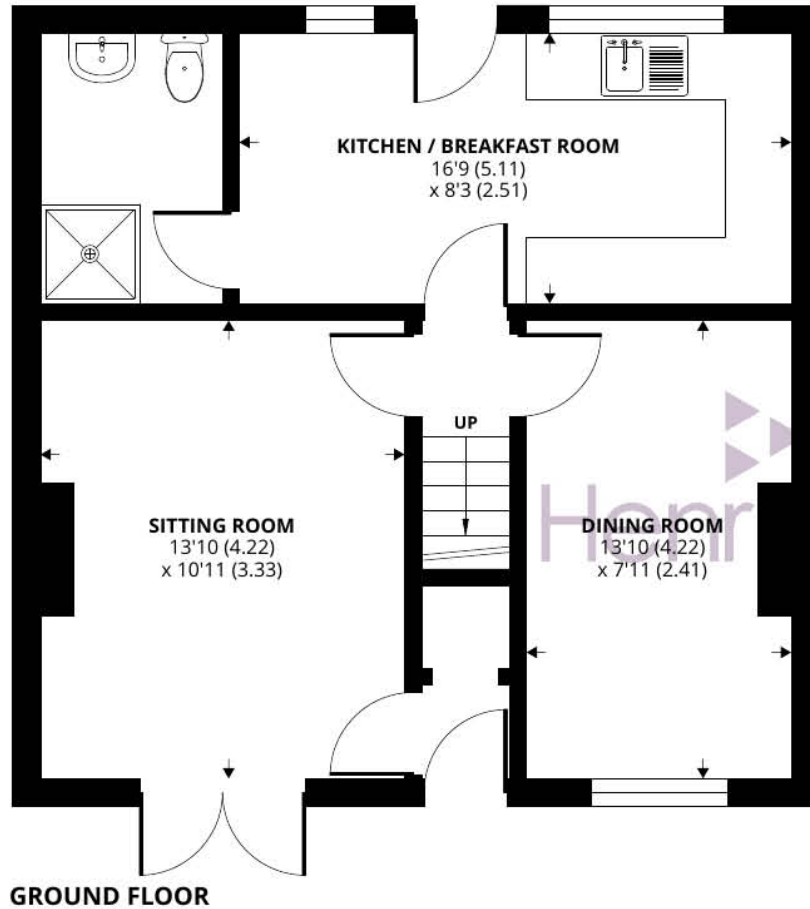
- ▶ No Onward Chain
- ▶ Character Cottage
- ▶ Overlooks The Village Green
- ▶ On Street Parking
- ▶ Well-Proportioned Accommodation
- ▶ In Need Of Refurbishment
- ▶ Sought After Location
- ▶ South Facing Garden
- ▶ Sold By Secured Sale
- ▶ Fantastic Investment Opportunity

Nestled within the picturesque village of Stedham, this charming two-bedroom mid-terrace character cottage presents a rare opportunity for those with a vision for restoration and a desire to create their dream home. With tile-hung elevations exuding traditional charm, and a coveted south-facing garden boasting views over the tranquil village green, this property offers a quintessential English countryside lifestyle.

Stepping inside, the potential of this cottage becomes apparent, though in need of comprehensive refurbishment, the canvas is primed for transformation. The ground floor encompasses a kitchen/breakfast room, providing the ideal hub for culinary endeavours and morning gatherings. Adjacent, two reception rooms beckon with promise; a welcoming sitting room, complete with a fireplace exuding warmth and character, and patio doors leading out to the garden, and a dining room poised for intimate dinners or casual family meals. Additionally, a convenient shower room on this level adds practicality to the layout. Ascending the stairs, the first floor unveils further possibilities with two bedrooms awaiting rejuvenation. The larger of the two, currently configured as a double, offers ample space, while the adjacent generous single bedroom holds potential for versatile use, be it as a guest room, home office, or cosy retreat.

Beyond its weathered façade lies the promise of a quintessential English cottage lifestyle awaiting revival. With its idyllic setting and endless potential, this property represents a rare opportunity to craft a bespoke home in a coveted location.





## The Alley, Stedham, Midhurst

Approximate Area = 846 sq ft / 78.5 sq m

Outbuilding = 89 sq ft / 8.2 sq m

Total = 935 sq ft / 86.7 sq m

For identification only - Not to scale



Floor plan produced in accordance with RICS Property Measurement Standards incorporating International Property Measurement Standards (IPMS2 Residential). © nichecom 2024. Produced for Henry Adams. REF: 1119007

Agents Note - Our particulars are for guidance only and are intended to give a fair overall summary of the property. They do not form part of any contract or offer, and should not be relied upon as a statement or representation of fact. Measurements, areas and distances are approximate only. Photographs may include lifestyle shots and pictures of local views. No undertaking is given as to the structural condition of the property, or any necessary consents or the operating ability or efficiency of any service, system or appliance. Please ask if you would like further information, especially before you travel to the property.

## Location and Amenities

Stedham is a picturesque village nestled in the scenic countryside of West Sussex. With its charming rural setting, historical landmarks, and warm community spirit, Stedham captures the essence of an idyllic English village.

Surrounded by rolling hills and lush green fields, Stedham offers a tranquil escape from the hustle and bustle of city life. The village is located within the South Downs National Park, renowned for its outstanding natural beauty and abundant wildlife. Visitors can explore the numerous walking trails that crisscross the area, immersing themselves in the serene countryside and enjoying impressive views of the landscape.

At the heart of Stedham lies its historic village centre, characterised by traditional thatched-roof cottages and quaint, timber-framed buildings. The village has a rich heritage dating back centuries, and its charming architecture reflects its long-standing history. The picturesque Stedham Church, with its striking spire, stands as a prominent landmark and a testament to the village's historical significance.

