




King Edward VII Apartments, Kings Drive, Midhurst GU29 0EY

A fantastic opportunity to acquire a modern, light and spacious apartment on the prestigious King Edward VII Estate.

 1  2  2  N/A

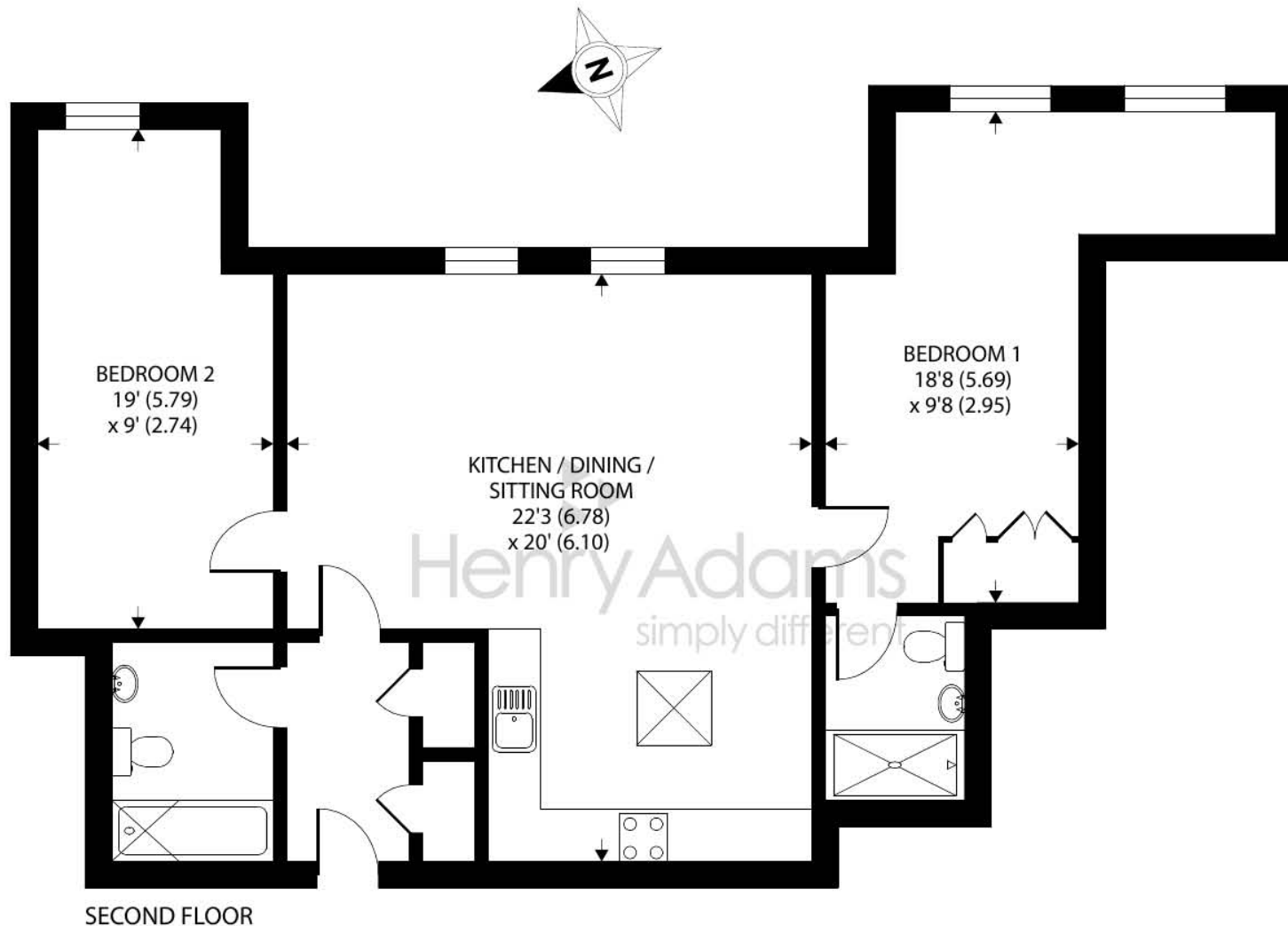
- ▶ Prestigious Development
- ▶ Concierge Service
- ▶ On Site Facilities
- ▶ Unique Design
- ▶ Two Parking Spaces
- ▶ Service Charge - £3535pa
- ▶ Ground Rent - £250 per annum
- ▶ Council Tax Band - D
- ▶ High Specification
- ▶ Set Within 165 Acres of Woodland

Located on the top floor of the Southeast Wing, this charming apartment takes up a private, elevated position with well-proportioned accommodation. This beautifully presented character conversion has been subject to some thoughtful updating; Standout features include a high specification finish throughout, two luxury bathroom suites with travertine tiling and the benefit of a superbly fitted, open plan, kitchen/dining/ sitting room with integrated Siemens appliances and ample space to entertain. Both double bedrooms come with additional space, ideal for a home office/study area and the use of independent bathrooms.

Viewing is a must to take in the impressive architectural features and the special setting that surrounds it.

Located in the heart of the spectacular South Downs National Park, the King Edward VII estate offers contemporary luxury living within the timeless landscape of an Area of Outstanding Natural Beauty. The elegant Grade II Listed building and Gertrude Jekyll Garden was originally founded at the beginning of the 20th Century, which has been superbly restored to provide elegant spaces to relax and socialise in. Onsite facilities include a gym, indoor swimming pool and steam room, 165 acres of woodland walks on the estate and the availability of a guest suite should you need it.





King Edward VII Apartments, Kings Drive, Midhurst

Approximate Area = 921 sq ft / 85.6 sq m

For identification only - Not to scale



Agents Note - Our particulars are for guidance only and are intended to give a fair overall summary of the property. They do not form part of any contract or offer, and should not be relied upon as a statement or representation of fact. Measurements, areas and distances are approximate only. Photographs may include lifestyle shots and pictures of local views. No undertaking is given as to the structural condition of the property, or any necessary consents or the operating ability or efficiency of any service, system or appliance. Please ask if you would like further information, especially before you travel to the property.

King Edward VII Estate

Built in 1901 and designed to be a tuberculosis hospital, the King Edward VII Sanatorium was officially opened by His Majesty King Edward VII on 6th June 1906, heralded as one of the three finest hospital buildings of its time. Since then, through expert restoration, the vision has been to create a new and vibrant destination in the centre of a glorious location.

Located in the heart of the spectacular South Downs National Park, the King Edward VII estate offers contemporary luxury living within the timeless landscape of an Area of Outstanding Natural Beauty. This stunning Grade II listed building has been superbly restored to provide elegant spaces to relax and socialise in including full usage of the communal (former) ladies reading room and former nurses dining hall. The Estate's friendly concierge is also on hand to ensure you feel perfectly at home; he/she can accept deliveries and offer helpful advice on local activities, among other things. Cowdray and Goodwood Estates are both within easy reach as is Haslemere railway station, offering excellent transport links to London.

