



18 Russell Court, Midhurst, West Sussex, GU29 9NE

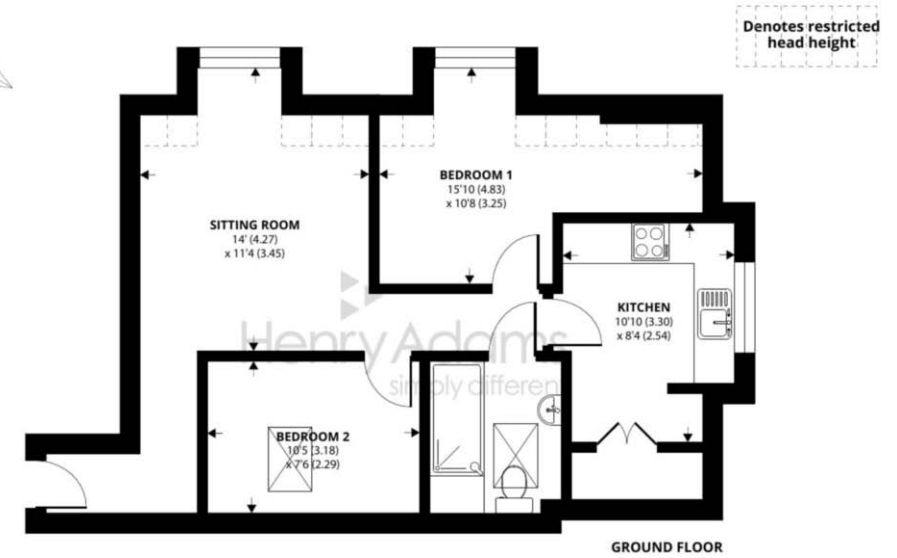
A two bedroom retirement flat positioned in the heart of Midhurst within easy access to local amenities.



- ▶ No Onward Chain
- ▶ Light and Airy Apartment
- ▶ Lift Access to All Floors
- ▶ Over 60's Development
- ▶ Updated Walk-In Shower Room
- ▶ Available Parking
- ▶ Laundry Room
- ▶ Centre of Town
- ▶ Views Over Midhurst
- ▶ Residents Room & Garden

This spacious two bedroom retirement flat is positioned in the centre of town within easy access to all of your everyday essentials whilst benefitting from views over Midhurst. Russell Court is an attractive retirement development built in 1989 by T.H. Russell Limited. It consists of 21 apartments in a single building with undercroft parking. There is an emergency alarm system in all properties, residents' lounge, lift, communal laundry room and guest facilities. Russell Court has been designed to be easily manageable in a secure environment, providing independent living with the assistance of a visiting scheme manager to take care of day-to-day management issues at the development. The service costs cover the management and each resident contributes quarterly, assessed according to the size of the individual property.

The thriving town of Midhurst resides on the Surrey and Sussex border. Full of listed buildings, attractive shops and narrow lanes, it's also blessed with charming hotels and restaurants. There are also primary schools, an Academy College, leisure complex, medical centre, a library, Sainsburys and the Cowdray Park golf course. The town has previously been declared as one of the best places to live in the South East by a Sunday Times survey which was based on a number of criteria including lifestyle, crime rate, schooling and house prices. Discover more extensive havens of choice in nearby Haslemere and Chichester, while neighbouring Petworth has a variety of shops and National Trust parkland.



Approximate Area = 558 sq ft / 51.8 sq m
Limited Use Area(s) = 41 sq ft / 3.8 sq m
Total = 599 sq ft / 55.6 sq m
For identification only - Not to scale

