



## TORUN WAY

Haydon End, Swindon, Wilts SN25 1TA

  
**PRIMARY**  
HOMES & LETTINGS



## Torun Way, Haydon End, Swindon SN25 1TA

- AVAILABLE NOW
- Second Floor Apartment
- Two DOUBLE Bedrooms
- Lounge/Diner
- Kitchen (White Goods Included)
- Bathroom
- Allocated Parking
- Built In Wardrobe
- Excellent Location
- No Pets

**£950 PCM**



\*\*\* AVAILABLE NOW \*\*\* Primary Homes & Lettings are pleased to offer this well presented and spacious second floor two DOUBLE bedroom apartment situated in Haydon End, North Swindon within walking distance to the Orbital Shopping Centre, schools and local amenities. The accommodation comprises of lounge/diner, kitchen, two bedrooms and bathroom. Property also benefits from allocated parking. Viewing is highly recommended.

### **Tenant Information**

Length of Tenancy: Long term let with initial tenancy agreement of 6 months

Council: Swindon Borough Council

Tax Band: C

### **Viewings**

Strictly via our Swindon office telephone (01793) 641641.

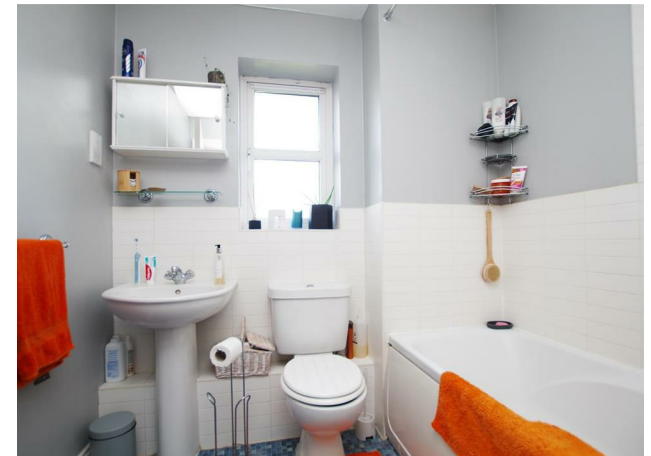
### **Sizes**

Please note, all measurements of room sizes given are not guaranteed and figures are for guidance only.

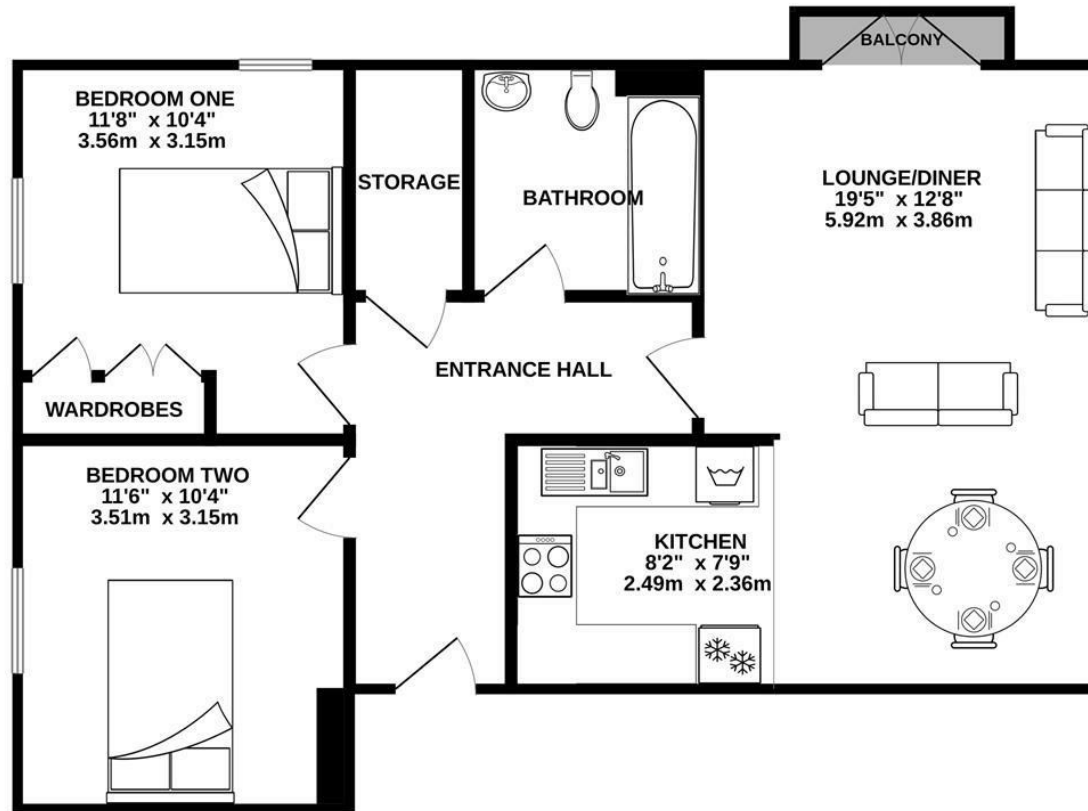
### **Photographs**

Please note that photos were taken prior

to the current tenants moving into the property.



SECOND FLOOR  
690 sq.ft. (64.1 sq.m.) approx.



TOTAL FLOOR AREA : 690 sq.ft. (64.1 sq.m.) approx.

Whilst every attempt has been made to ensure the accuracy of the floorplan contained here, measurements of doors, windows, rooms and any other items are approximate and no responsibility is taken for any error, omission or mis-statement. This plan is for illustrative purposes only and should be used as such by any prospective purchaser. The services, systems and appliances shown have not been tested and no guarantee as to their operability or efficiency can be given.  
Made with Metropix ©2023

01793 641641

101 Commercial Road, Swindon, SN1 5PL

info@primaryhomesandlettings.co.uk

**PRIMARY**  
HOMES & LETTINGS