



**HOLNE ROAD**

Wichelstowe, Swindon, SN1 7BQ

  
**PRIMARY**  
HOMES & LETTINGS

## Holne Road, Wichelstowe, Swindon SN1 7BQ

- AVAILABLE NOW
- Ground Floor Flat
- Two Bedrooms
- GARAGE
- Open Plan Lounge/Diner/Kitchen
- Modern Bathroom
- Gas Central Heating
- EPC Rating - B
- Communal Garden
- Excellent Location

**£1,100 PCM**



\*\*\* AVAILABLE NOW \*\*\* Primary Homes & Lettings are delighted to offer this well presented two bedroom ground floor flat offered unfurnished. The accommodation comprises of entrance hallway (with storage cupboard), open plan lounge/diner/kitchen, two bedrooms and bathroom. Property also benefits from a GARAGE, gas central heating and communal garden. Located in the popular area of Wichelstowe within walking distance to East Wichel primary school (recently won the TES awards primary school of the year 2025), Kingfisher CE Academy, Deanery CE Academy, Waitrose and The popular Hall and Woodhouse pub & restaurant, also offering excellent country walks for dogwalkers and walkers alike.

### **Tenant Information**

Length of Tenancy: Long term let with initial tenancy agreement of 6 months

Council: Swindon Borough Council

Tax Band: C

### **Sizes**

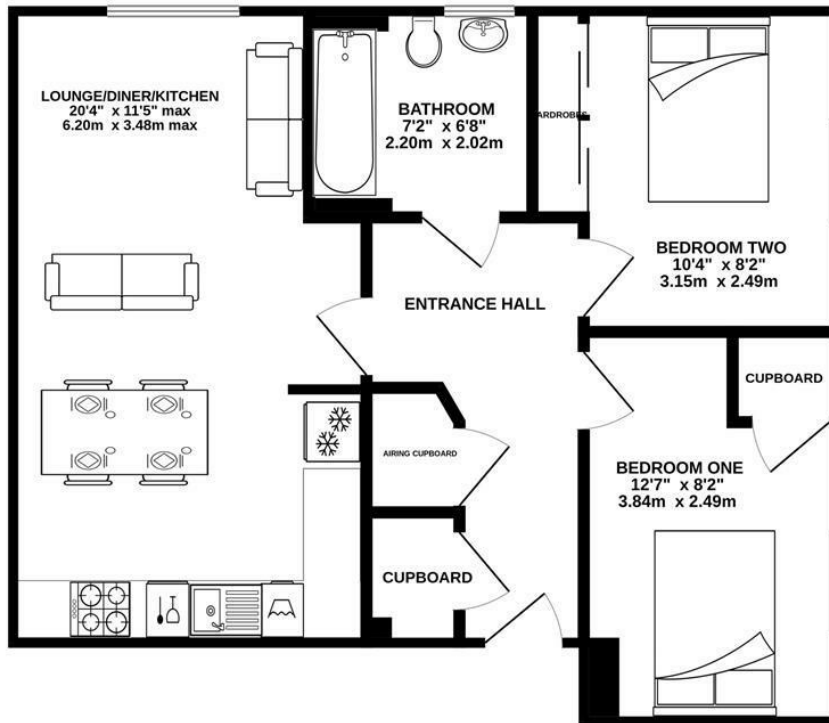
Please note, all measurements of room sizes given are not guaranteed and figures are for guidance only.

### **Viewings**

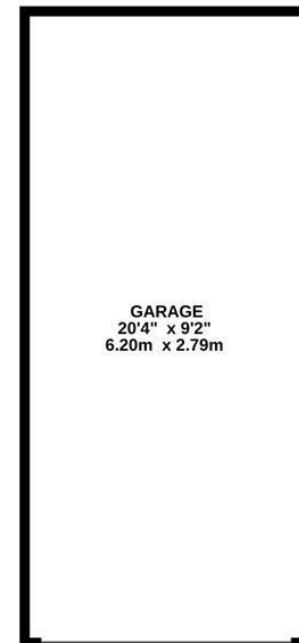
Strictly via our Swindon office telephone (01793) 641641.



GROUND FLOOR  
554 sq.ft. (51.5 sq.m.) approx.



GARAGE  
186 sq.ft. (17.3 sq.m.) approx.



TOTAL FLOOR AREA : 740 sq.ft. (68.8 sq.m.) approx.

Whilst every attempt has been made to ensure the accuracy of the floorplan contained here, measurements of doors, windows, rooms and any other items are approximate and no responsibility is taken for any error, omission or mis-statement. This plan is for illustrative purposes only and should be used as such by any prospective purchaser. The services, systems and appliances shown have not been tested and no guarantee as to their operability or efficiency can be given.  
Made with Metropix ©2026

01793 641641

101 Commercial Road, Swindon, SN1 5PL

info@primaryhomesandlettings.co.uk

**PRIMARY**  
HOMES & LETTINGS