



BOURNE ROAD

Moredon, Swindon, Wiltshire SN2 2JP


PRIMARY
HOMES & LETTINGS

Bourne Road, Moredon, Swindon SN2 2JP

- AVAILABLE NOW
- Mid Terrace House
- Three Good Size Bedrooms
- Driveway Parking
- Unfurnished
- Two Reception Rooms
- Kitchen
- SOUTH Facing Rear Garden
- Upstairs Bathroom
- NO PETS

£1,200 PCM



*** AVAILABLE NOW *** Well presented and spacious three bedroom mid terrace house offered unfurnished. The accommodation briefly comprises of entrance hallway, living room, dining room, kitchen, three bedrooms and bathroom. Property also benefits from driveway parking, a low maintenance rear garden, gas central and uPVC double glazing. Located in Moredon within walking distance to all local amenities and schools.

Tenant Information

Length of Tenancy: Long term let with initial tenancy agreement of 6 months

Council: Swindon Borough Council

Tax Band: B

Photographs

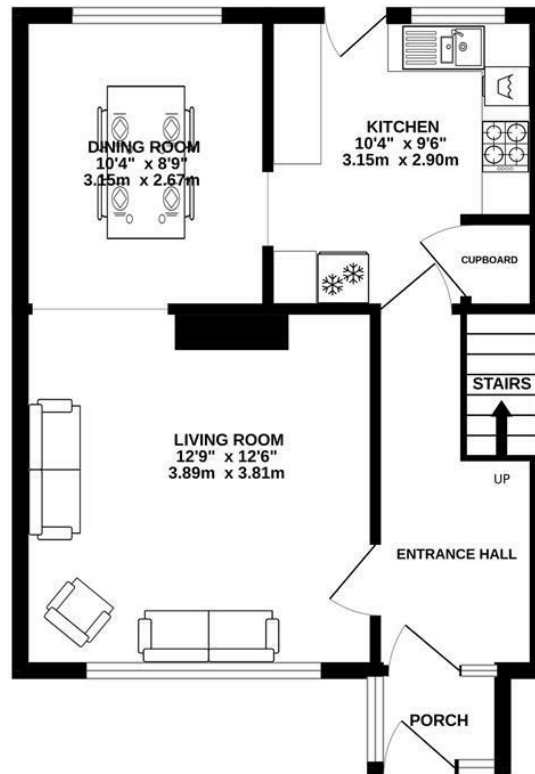
Please note that photos were taken prior to the current tenants moving into the property.

Viewings

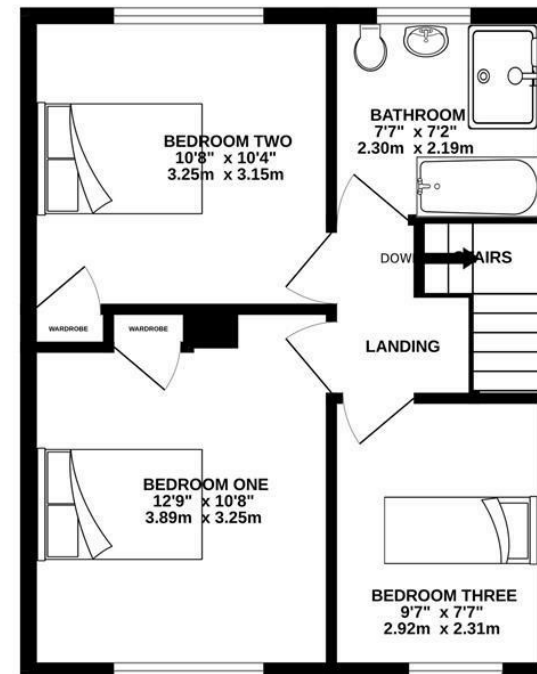
Strictly via our Swindon office telephone (01793) 641641.



GROUND FLOOR
431 sq.ft. (40.0 sq.m.) approx.



1ST FLOOR
418 sq.ft. (38.9 sq.m.) approx.



TOTAL FLOOR AREA : 849 sq.ft. (78.9 sq.m.) approx.

Whilst every attempt has been made to ensure the accuracy of the floorplan contained here, measurements of doors, windows, rooms and any other items are approximate and no responsibility is taken for any error, omission or mis-statement. This plan is for illustrative purposes only and should be used as such by any prospective purchaser. The services, systems and appliances shown have not been tested and no guarantee as to their operability or efficiency can be given.
Made with Metropix ©2025



01793 641641

10 Commercial Road, Swindon, SN1 5PL

info@primaryhomesandlettings.co.uk

PRIMARY
HOMES & LETTINGS