



**LINNETSDENE**

Covingham, Swindon, Wilts SN3 5AG

  
**PRIMARY**  
HOMES & LETTINGS



## Linnetsdene, Covingham, Swindon SN3 5AG

- AVAILABLE NOW
- Semi Detached House
- Three Bedrooms
- Large Enclosed Rear Garden
- Driveway Parking For Several Vehicles
- Garage
- NEW Kitchen/Breakfast
- Living Room
- Modern Bathroom
- Excellent Location

**£1,450 PCM**



**\*\*\* AVAILABLE NOW \*\*\*** We are pleased to offer this well presented three bedroom semi detached house offered unfurnished. Located in Covingham with easy access to local amenities, schools and transport links such as the A419 & A420. The accommodation comprises of entrance porch, hallway, living room, kitchen/breakfast, three bedrooms and bathroom. Property also benefits from a garage, driveway parking for several vehicles, large enclosed rear garden and gas central heating.

### **Tenant Information**

Length of Tenancy: Long term let with initial tenancy agreement of 6 months

Council: Swindon Borough Council

Tax Band: C

### **Viewings**

Strictly via our Swindon office telephone (01793) 641641.

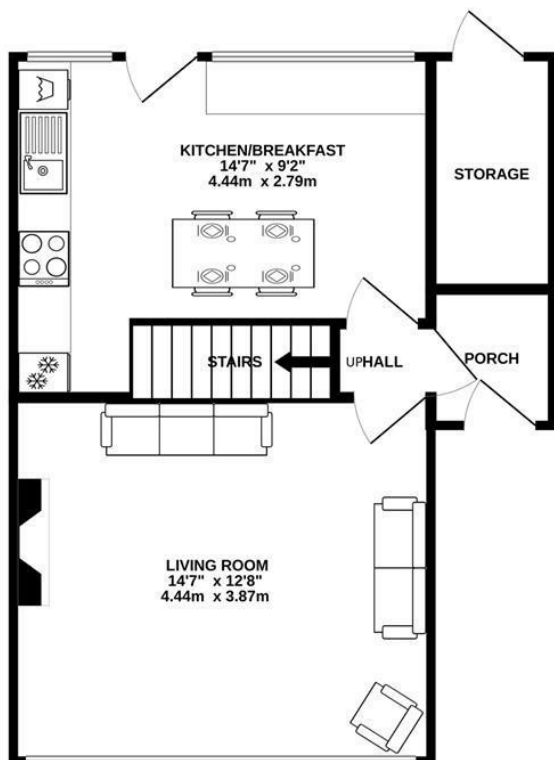
### **Sizes**

Please note, all measurements of room sizes given are not guaranteed and figures are for guidance only.

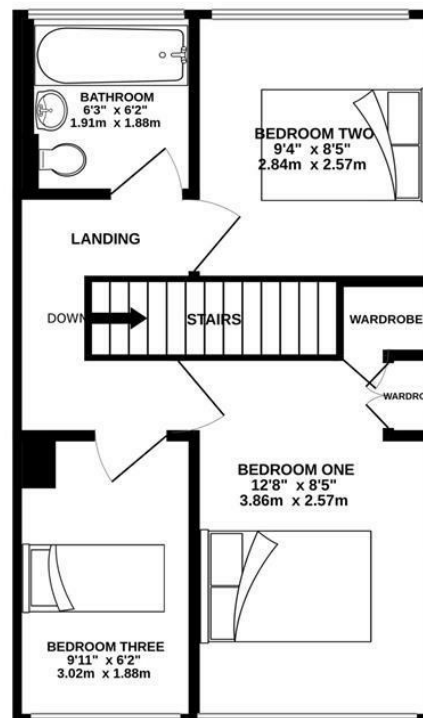




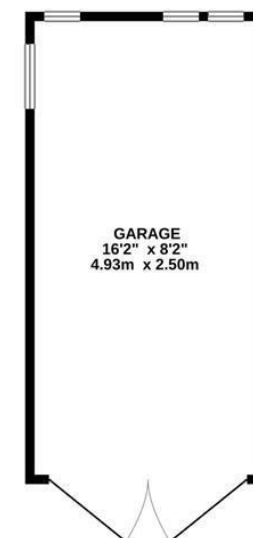
GROUND FLOOR  
408 sq.ft. (37.9 sq.m.) approx.



1ST FLOOR  
353 sq.ft. (32.8 sq.m.) approx.



GARAGE  
132 sq.ft. (12.3 sq.m.) approx.



TOTAL FLOOR AREA : 894 sq.ft. (83.1 sq.m.) approx.

Whilst every attempt has been made to ensure the accuracy of the floorplan contained here, measurements of doors, windows, rooms and any other items are approximate and no responsibility is taken for any error, omission or mis-statement. This plan is for illustrative purposes only and should be used as such by any prospective purchaser. The services, systems and appliances shown have not been tested and no guarantee as to their operability or efficiency can be given.  
Made with Metropix ©2025



01793 641641

10 Commercial Road, Swindon, SN1 5PL

info@primaryhomesandlettings.co.uk

**PRIMARY**  
HOMES & LETTINGS