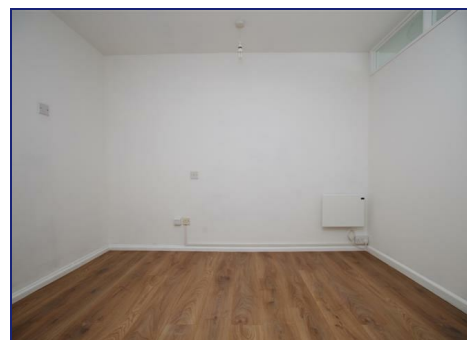




We are pleased to offer this well presented first floor flat located in the popular market town of Royal Wootton Bassett within walking distance to all local amenities and high street. The accommodation comprises of lounge/diner/kitchen, bedroom and separate shower room. The property also benefits from off road parking for one vehicle. Viewing is highly recommended.



£650 PCM

MARLBOROUGH COURT
, Royal Wootton Bassett, Wilts SN4 8HG



Available From 13.06.2025

First Floor Flat

One Bedroom

Lounge/Diner/Kitchen

Off Road Parking

Shower Room

White Goods Included

Good Location

No Pets

Tenant Information

Length of Tenancy: Long term let with initial tenancy agreement of 6 months

Council: Wiltshire Council

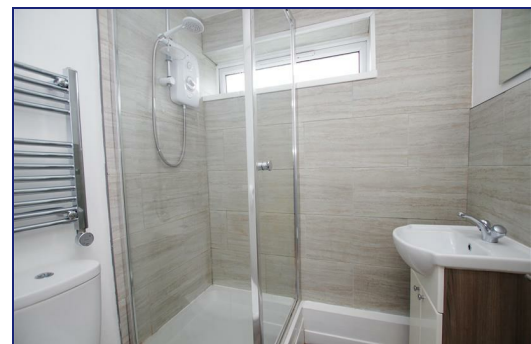
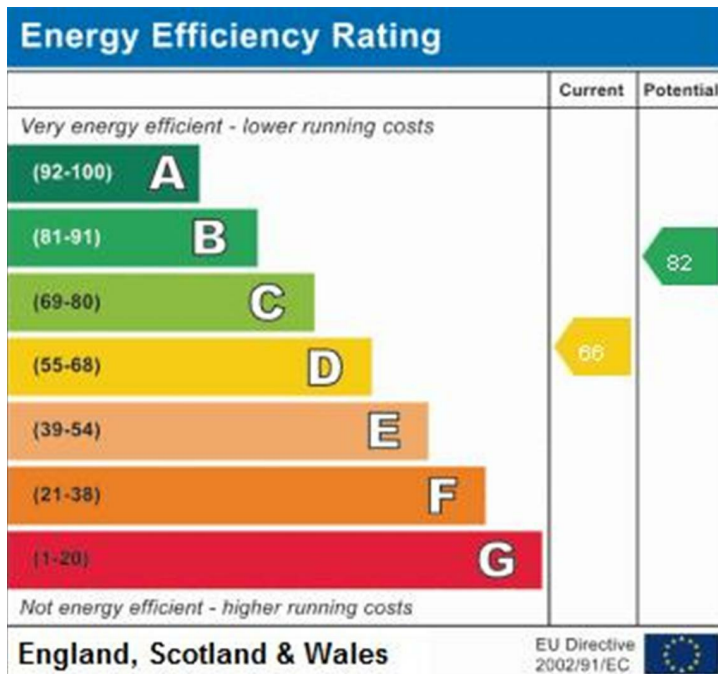
Tax Band: A

Photographs

Please note that photos were taken prior to the current tenants moving into the property.

Viewings

Strictly via our Swindon office telephone (01793) 641641.



01793 641641

10 Commercial Road, Swindon, SN1 5PL

info@primaryhomesandlettings.co.uk

PRIMARY
HOMES & LETTINGS