



**23 Bushton Close, Badbury  
Park, Swindon, SN3 6FD**

- AVAILABLE NOW
- Detached House
- Three DOUBLE Bedrooms
- GARAGE
- Good Size Rear Garden (South Facing)
- 18FT Kitchen/Diner
- Utility Room & Downstairs Cloakroom
- En-Suite Shower To Master
- Driveway Parking
- Good Location

**£1,500 PCM**



\*\*\* AVAILABLE NOW \*\*\* Primary Homes & Lettings are delighted to offer this well presented and spacious three DOUBLE bedroom detached house offered unfurnished. Located in the popular development of Badbury Park situated next to Coate Water country park, within easy access to a local school, Co-Op shop the M4 motorway and Great Western Hospital. The accommodation comprises of living room, kitchen/diner, utility room, master bedroom (with en-suite shower), two further bedrooms and bathroom. Property also benefits from a good size rear garden, garage and driveway parking.

### EPC

Rating - B

### Tenant Information

Length of Tenancy: Long term let with initial tenancy agreement of 6 months

Council: Swindon Borough Council

Tax Band: E

### Viewings

Strictly via our Swindon office telephone (01793) 641641.

### Sizes

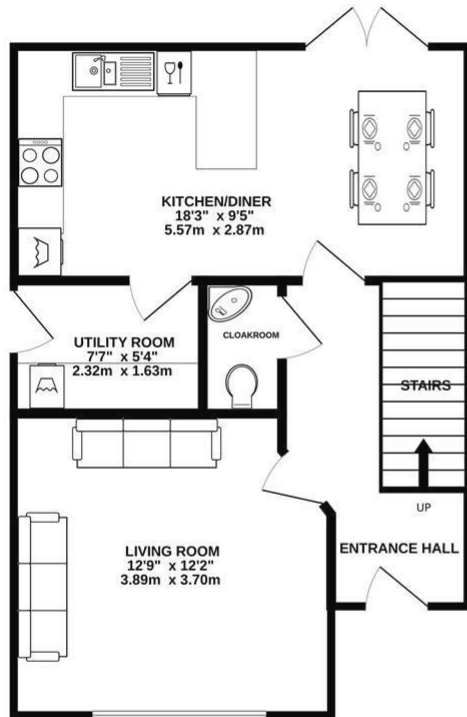
Please note, all measurements of room sizes given are not guaranteed and figures are for guidance only.



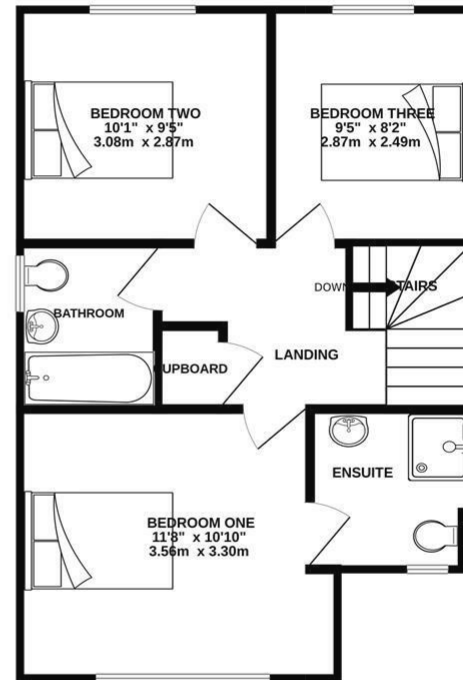
# PRIMARY HOMES & LETTINGS

Tel: 01793 641 641

GROUND FLOOR  
467 sq.ft. (43.4 sq.m.) approx.



1ST FLOOR  
466 sq.ft. (43.3 sq.m.) approx.



TOTAL FLOOR AREA : 933 sq.ft. (86.7 sq.m.) approx.

Whilst every attempt has been made to ensure the accuracy of the floorplan contained here, measurements of doors, windows, rooms and any other items are approximate and no responsibility is taken for any error, omission or mis-statement. This plan is for illustrative purposes only and should be used as such by any prospective purchaser. The services, systems and appliances shown have not been tested and no guarantee as to their operability or efficiency can be given.  
Made with Metropix ©2024

101 Commercial Road, Swindon, SN1 5PL  
Tel: 01793 641641 Fax: 01793 618127  
Email: [info@primaryhomesandlettings.co.uk](mailto:info@primaryhomesandlettings.co.uk)  
[www.primaryhomesandlettings.co.uk](http://www.primaryhomesandlettings.co.uk)