





**95 Rodbourne Road, Rodbourne  
Cheney, Swindon, SN2 1DJ**

- AVAILABLE NOW
- Mid Terrace House
- Two DOUBLE Bedrooms
- Two Reception Rooms
- Large Kitchen Diner
- En-Suite Shower To Master
- Downstairs Bathroom
- Off Road Parking
- Good Location
- NEWLY RENOVATED

**£1,250 PCM**



\*\*\* AVAILABLE NOW \*\*\* We are pleased to offer this NEWLY RENOVATED two DOUBLE bedroom mid terrace house offered unfurnished. The accommodation briefly comprises of living room, family/dining room, bathroom, kitchen/diner, master bedroom (with en-suite) and one further bedroom. Property also benefits from off road parking. Located in Rodbourne within easy access to local amenities and town centre.

### **Tenant Information**

Length of Tenancy: Long term let with initial tenancy agreement of 6 months

Council: Swindon Borough Council

Tax Band: B

### **Viewings**

Strictly via our Swindon office telephone (01793) 641641.

### **Sizes**

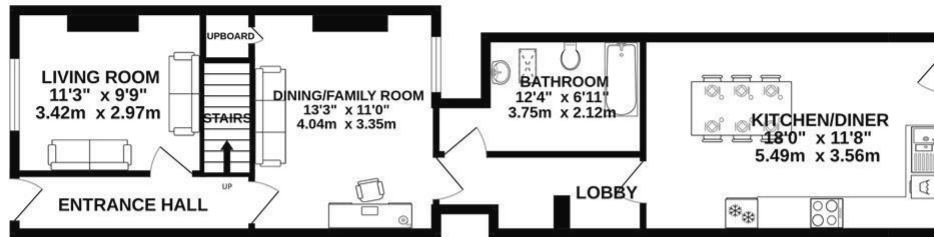
Please note, all measurements of room sizes given are not guaranteed and figures are for guidance only.



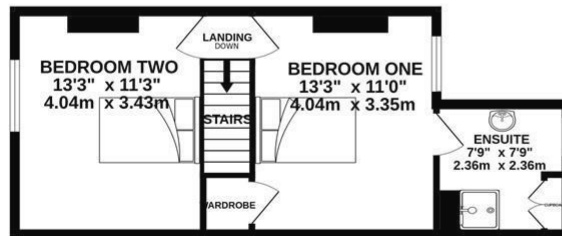
# PRIMARY HOMES & LETTINGS

Tel: 01793 641 641

GROUND FLOOR  
660 sq.ft. (61.3 sq.m.) approx.



1ST FLOOR  
382 sq.ft. (35.5 sq.m.) approx.



TOTAL FLOOR AREA: 1042 sq.ft. (96.8 sq.m.) approx.

Whilst every attempt has been made to ensure the accuracy of the floorplan contained here, measurements of doors, windows, rooms and any other items are approximate and no responsibility is taken for any error, omission or mis-statement. This plan is for illustrative purposes only and should be used as such by any prospective purchaser. The services, systems and appliances shown have not been tested and no guarantee as to their operability or efficiency can be given.  
Made with Metropix ©2024



101 Commercial Road, Swindon, SN1 5PL  
Tel: 01793 641641 Fax: 01793 618127  
Email: [info@primaryhomesandlettings.co.uk](mailto:info@primaryhomesandlettings.co.uk)  
[www.primaryhomesandlettings.co.uk](http://www.primaryhomesandlettings.co.uk)