



1 Ambrose Cottage High Street, Wanborough, Swindon, SN4 0AG

- AVAILABLE NOW
- Two DOUBLE Bedroom Cottage
- Three Reception Rooms
- Modern Kitchen
- Downstairs Cloakroom
- Large Enclosed Rear Garden
- 20ft Shed/Workshop (With light and power)
- Off Road Parking For Several Cars
- NEWLY DECORATED
- Sought After Location

£1,600 PCM



*** AVAILABLE NOW *** Primary Homes & Lettings are delighted to offer this well presented and EXTENDED two DOUBLE bedroom cottage offered unfurnished. Located in the sought after village of Wanborough, within walking distance to the primary school, Hoopers Field and all of Wanborough's five pubs. The accommodation comprises of entrance porch, living room, kitchen, dining room, study/family room, cloakroom, two bedrooms and shower room. Property also benefits from a large enclosed rear garden, off road parking for several cars, timber frame workshop (with light and power) and gas central heating.

Tenant Information

Length of Tenancy: Long term let with initial tenancy agreement of 6 months

Council: Swindon Borough Council

Tax Band: D

Viewings

Strictly via our Swindon office telephone (01793) 641641.

Sizes

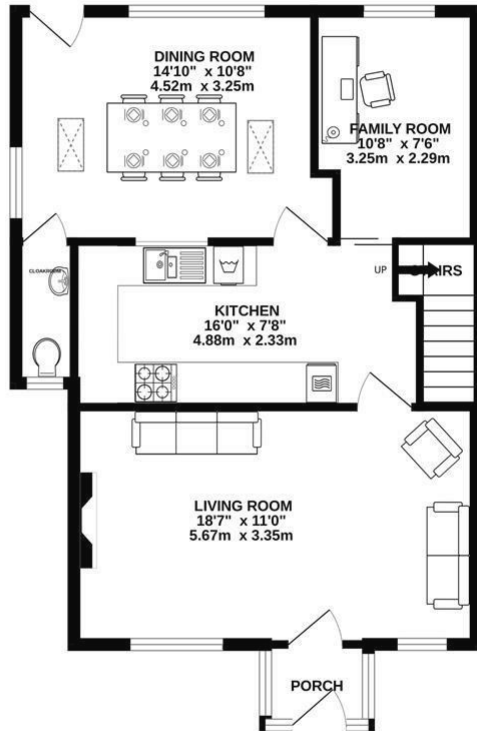
Please note, all measurements of room sizes given are not guaranteed and figures are for guidance only.



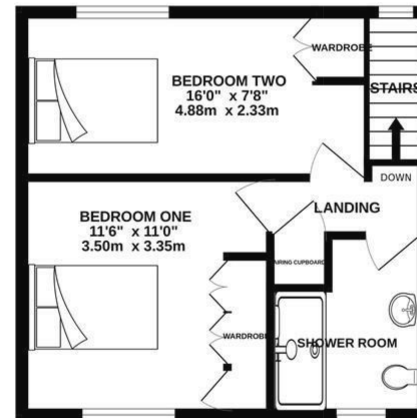
PRIMARY HOMES & LETTINGS

Tel: 01793 641 641

GROUND FLOOR
605 sq.ft. (56.2 sq.m.) approx.



1ST FLOOR
346 sq.ft. (32.2 sq.m.) approx.



TOTAL FLOOR AREA: 952 sq.ft. (88.4 sq.m.) approx.

Whilst every attempt has been made to ensure the accuracy of the floorplan contained here, measurements of doors, windows, rooms and any other items are approximate and no responsibility is taken for any error, omission or mis-statement. This plan is for illustrative purposes only and should be used as such by any prospective purchaser. The services, systems and appliances shown have not been tested and no guarantee as to their operability or efficiency can be given.
Made with Metropix ©2024



101 Commercial Road, Swindon, SN1 5PL
Tel: 01793 641641 Fax: 01793 618127
Email: info@primaryhomesandlettings.co.uk
www.primaryhomesandlettings.co.uk