

# PRIMARY

Tel: 01793 641 641

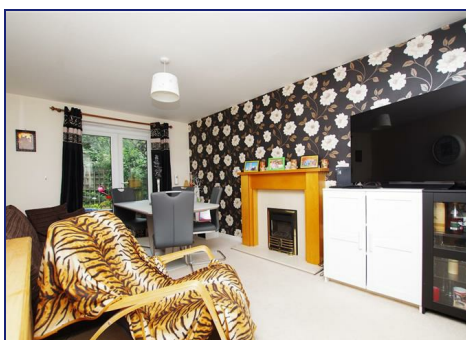
# HOMES & LETTINGS



## **Stardust Crescent, Oakhurst, Swindon SN25 2JU**

### **PCM £1,400 PCM**

Primary Homes & Lettings are delighted to offer this well presented and spacious three bedroom semi detached house offered unfurnished. The accommodation briefly comprises of entrance hallway, living room, dining, kitchen, cloakroom, master bedroom (en-suite shower), two further bedrooms and bathroom. Property also benefits from a garage, off road parking, enclosed rear garden, gas central heating and uPVC double glazing. Located in Oakhurst within easy access to local amenities, Orbital shopping centre and transport links such as the A419. An early viewing is highly recommended.



## Tenant Information

Length of Tenancy: Long term let with initial tenancy agreement of 6 months

Council: Swindon Borough Council

Tax Band: D

## Sizes

Please note, all measurements of room sizes given are not guaranteed and figures are for guidance only.

## Viewings

Strictly via our Swindon office telephone (01793) 641641.

## Photographs

Please note that photos were taken prior to the current tenants moving into the property.

