



**65 Purton Road,
Moreton, Swindon, SN2 2LT**

- AVAILABLE NOW
- End Terrace House
- Three Bedrooms
- NEWLY RENOVATED
- Living Room
- 18ft Kitchen/Diner
- White Goods Included
- Bathroom
- Enclosed Rear Garden
- Good Location

£1,250 PCM



*** AVAILABLE NOW *** We are delighted to offer this NEWLY RENOVATED three bedroom end terrace house offered unfurnished. Located in Moredon within easy access to all local amenities and schools. The accommodation comprises of entrance porch, living room, kitchen/diner, three bedrooms and bathroom. Property also benefits from front and rear garden and uPVC double glazing.

Tenant Information

Length of Tenancy: Long term let with initial tenancy agreement of 6/12 months

Council: Swindon Borough Council

Tax Band: B

Sizes

Please note, all measurements of room sizes given are not guaranteed and figures are for guidance only.

Viewings

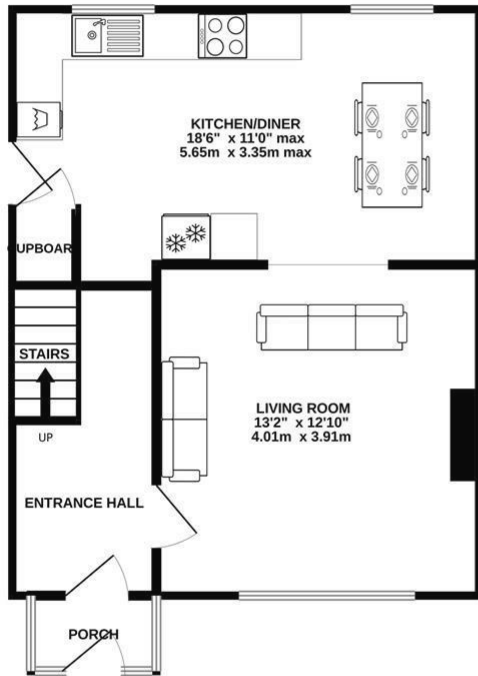
Strictly via our Swindon office telephone (01793) 641641.



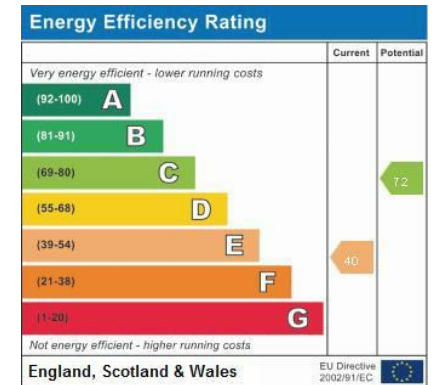
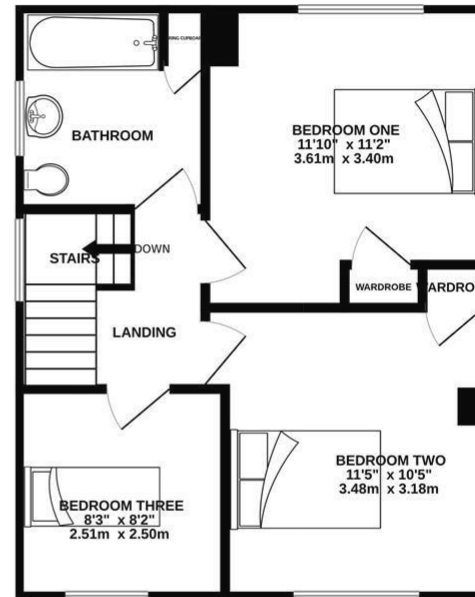
PRIMARY HOMES & LETTINGS

Tel: 01793 641 641

GROUND FLOOR
443 sq.ft. (41.2 sq.m.) approx.



1ST FLOOR
428 sq.ft. (39.8 sq.m.) approx.



TOTAL FLOOR AREA : 872 sq.ft. (81.0 sq.m.) approx.

Whilst every attempt has been made to ensure the accuracy of the floorplan contained here, measurements of doors, windows, rooms and any other items are approximate and no responsibility is taken for any error, omission or mis-statement. This plan is for illustrative purposes only and should be used as such by any prospective purchaser. The services, systems and appliances shown have not been tested and no guarantee as to their operability or efficiency can be given.
Made with Metropix ©2024



101 Commercial Road, Swindon, SN1 5PL
Tel: 01793 641641 Fax: 01793 618127
Email: info@primaryhomesandlettings.co.uk
www.primaryhomesandlettings.co.uk