



**67 Birch Street, Town
Centre, Swindon, SN1 5EZ**

- AVAILABLE FROM 31.05.24
- End Terrace House
- Two DOUBLE Bedrooms
- Living Room & Dining Room
- Modern Kitchen
- Four Piece Bathroom
- Off Road Parking
- Low Maintenance Rear Garden
- Good Location
- Unfurnished

£1,100 PCM



Well presented and spacious two DOUBLE bedroom end terrace house offered unfurnished. The accommodation comprises of living room, dining room, bathroom, kitchen and two bedrooms. The property also benefits from off road parking for one vehicle, low maintenance rear garden, gas central heating and uPVC double glazing. Located in Birch St within walking distance to the town centre, train station and Designer Outlet Village. Viewing is highly recommended.

Tenant Information

Length of Tenancy: Long term let with initial tenancy agreement of 6 months

Council: Swindon Borough Council

Tax Band: B

Photographs

Please note that photos were taken prior to the current tenants moving into the property.

Sizes

Please note, all measurements of room sizes given are not guaranteed and figures are for guidance only.

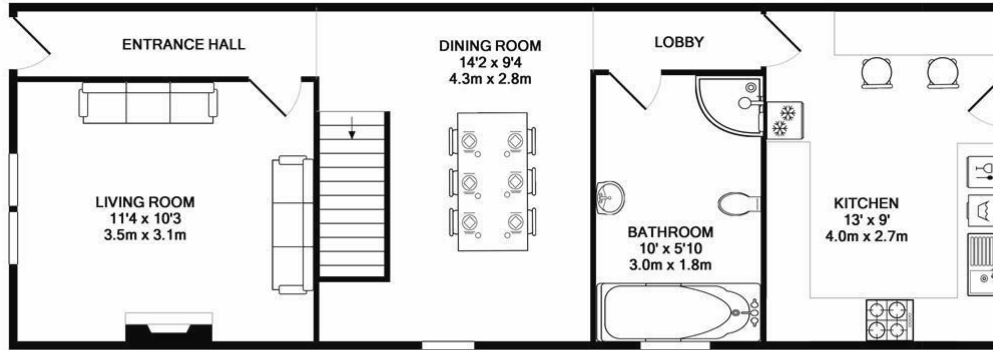
Viewings

Strictly via our Swindon office telephone (01793) 641641.

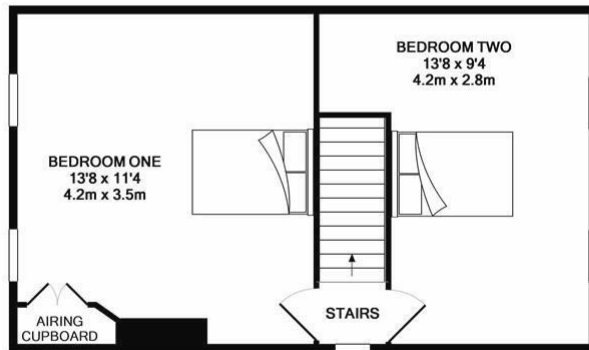


PRIMARY HOMES & LETTINGS

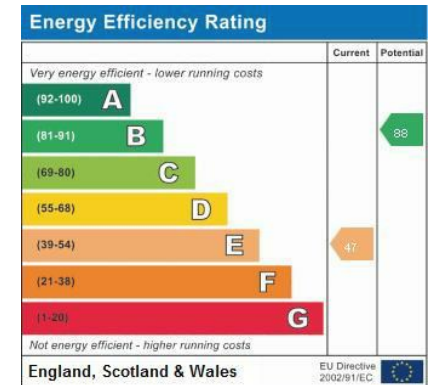
Tel: 01793 641 641



GROUND FLOOR



1ST FLOOR



FOR ILLUSTRATION ONLY

Whilst every attempt has been made to ensure the accuracy of the floor plan contained here, measurements of doors, windows, rooms and any other items are approximate and no responsibility is taken for any error, omission, or mis-statement. This plan is for illustrative purposes only and should be used as such by any prospective purchaser. The services, systems and appliances shown have not been tested and no guarantee as to their operability or efficiency can be given.
Made with Metropix ©2019

101 Commercial Road, Swindon, SN1 5PL
 Tel: 01793 641641 Fax: 01793 618127
 Email: info@primaryhomesandlettings.co.uk
www.primaryhomesandlettings.co.uk