



**8A St. Philips Road, Upper
Stratton, Swindon, SN2 7QP**

- IDEAL FIRST TIME BUY OR BUY TO LET INVESTMENT
- Ground Floor Maisonette
- Two Bedrooms
- NO ONWARD CHAIN
- 23FT Open Plan Lounge/Diner/Kitchen
- Bathroom
- Courtyard Garden
- Long Lease - 960 Years Remaining
- Gas Central Heating
- Good Location

Offers Over £150,000



*** IDEAL FIRST TIME BUY OR BUY TO LET INVESTMENT *** Primary Homes & Lettings are pleased to offer this two bedroom ground floor maisonette being sold with NO ONWARD CHAIN. The accommodation comprises of a open plan lounge/diner/kitchen, two bedrooms and family bathroom. The property also benefits from a courtyard garden, gas central heating and uPVC double glazing. Located in Upper Stratton within easy access to local amenities, schools and transport links such as the A419.

Entrance Hallway

uPVC front door.

Lounge/Diner/Kitchen

uPVC sliding door and window to rear elevation. Matching wall and base units with rolled edge worktops over. Acrylic sink and drainer. Built in single oven. Ceramic hob with extractor hood over. Space for fridge/freezer. Two radiators.

Bedroom One

uPVC windows to front elevation. Radiator.

Bedroom Two

uPVC windows to front elevation. Meter cupboard. Radiator.

Bathroom

Obscured uPVC window to rear elevation. White suite comprising of panelled bath with shower over, pedestal wash hand basin and low level W.C. Space and plumbing for washing machine. Extractor fan. Part tiled walls. Vinyl flooring. Radiator.

Front

Stone wall with steps leading to storm porch.

Rear

Enclosed by timber fencing. Mostly gravelled with brick built BBQ.

Lease Terms

999 year lease with 960 years remaining.

Sizes

Please note, all measurements of room sizes given are not guaranteed and figures are for guidance only.

Viewings

Strictly via our Swindon office telephone (01793) 641641.

Mortgages

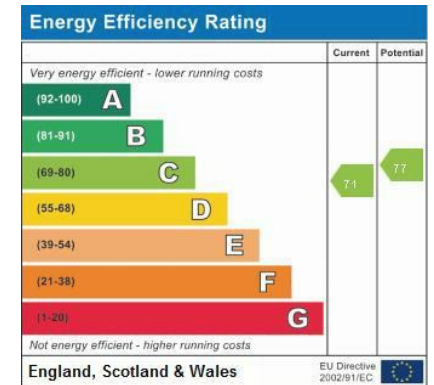
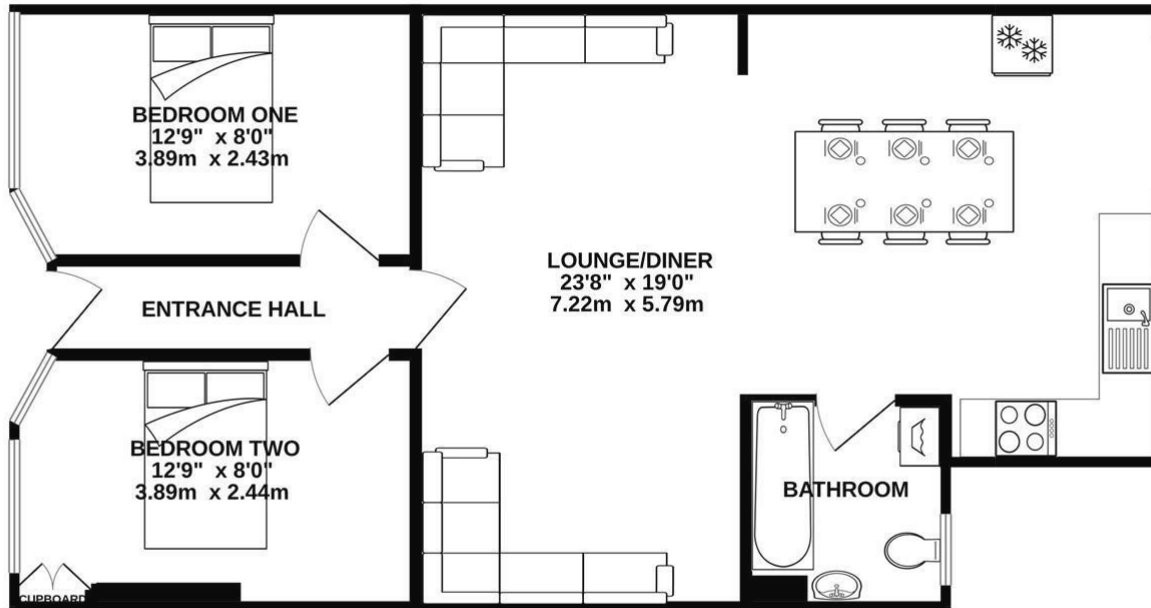
If you would like independent mortgage advice please call Dan Spurr at Primary on (01793) 616617. Home visits available.

Money Laundering

Intending purchasers will be asked to produce identification documentation at a later stage and we would ask for your co-operation in order that there will be no delay in agreeing the sale.



GROUND FLOOR MAISONETTE 649 sq.ft. (60.3 sq.m.) approx.



TOTAL FLOOR AREA : 649 sq.ft. (60.3 sq.m.) approx.

Whilst every attempt has been made to ensure the accuracy of the floorplan contained here, measurements of doors, windows, rooms and any other items are approximate and no responsibility is taken for any error, omission or mis-statement. This plan is for illustrative purposes only and should be used as such by any prospective purchaser. The services, systems and appliances shown have not been tested and no guarantee as to their operability or efficiency can be given.
Made with Metropix ©2024

101 Commercial Road, Swindon, SN1 5PL
Tel: 01793 641641 Fax: 01793 618127
Email: info@primaryhomesandlettings.co.uk
www.primaryhomesandlettings.co.uk