

PRIMARY
Tel: 01793 641 641

**HOMES &
LETTINGS**

**87 Ashbury Avenue
Nythe, Swindon, Wilts SN3 3LX**



**87 Ashbury Avenue,
Nythe, Swindon, SN3 3LX**

- Semi Detached House
- Three Bedrooms
- Unfurnished
- Three Reception Rooms
- Well Presented
- Non Over Looked Garden
- Garage
- Driveway Parking
- Good Location
- Available 08.10.21

£1,200 PCM



Primary Homes & Lettings are pleased to offer this well presented extended three bedroom semi detached house situated in Nythe within easy access to the A419 / M4 and all local amenities. The open plan ground floor accommodation comprises of entrance porch, entrance hallway, large living room, kitchen/breakfast, dining area, family room/study and large utility room. The first floor accommodation comprises of three bedrooms and family bathroom. Property also benefits from a large non over looked enclosed rear garden, garage and driveway parking for several vehicles. Offered unfurnished. Viewing is highly recommended.

Entrance Hallway

Cloakroom

Living Room

Kitchen / Breakfast

Dining Area

Family Room / Study

Bedroom One

Bedroom Two

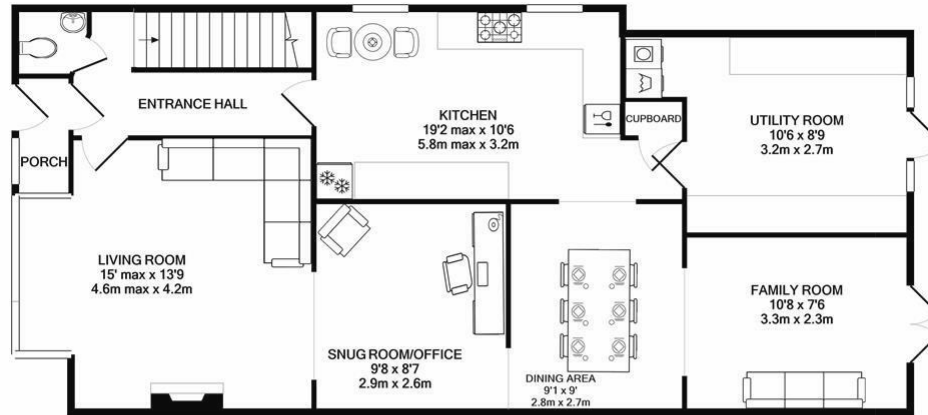
Bedroom Three

Enclosed Rear Garden

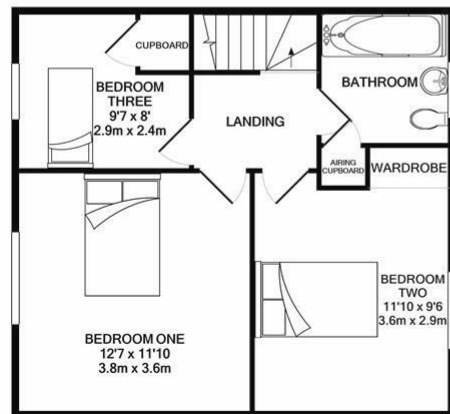


PRIMARY HOMES & LETTINGS

Tel: 01793 641 641



GROUND FLOOR



1ST FLOOR

FOR ILLUSTRATION ONLY

Whilst every attempt has been made to ensure the accuracy of the floor plan contained here, measurements of doors, windows, rooms and any other items are approximate and no responsibility is taken for any error, omission, or mis-statement. This plan is for illustrative purposes only and should be used as such by any prospective purchaser. The services, systems and appliances shown have not been tested and no guarantee as to their operability or efficiency can be given

Made with Metropix ©2021

