



Estate Agents • Lettings • Land & New Homes



10 Meredith Court, Cheshunt, Waltham Cross, EN8 8HL

Asking Price £220,000

Lanes are pleased to present to market this well presented second floor one bedroom purpose built flat. The property is conveniently located close to shops, overground stations that go directly into London and benefits from double glazing, gas central heating, parking and integrated appliances.



Hallway

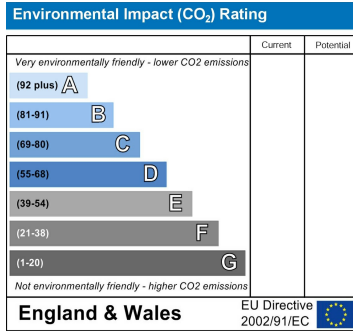
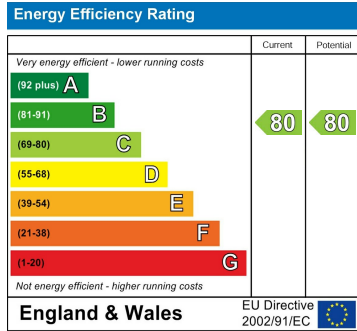
Open Plan Living Area

Kitchen Area

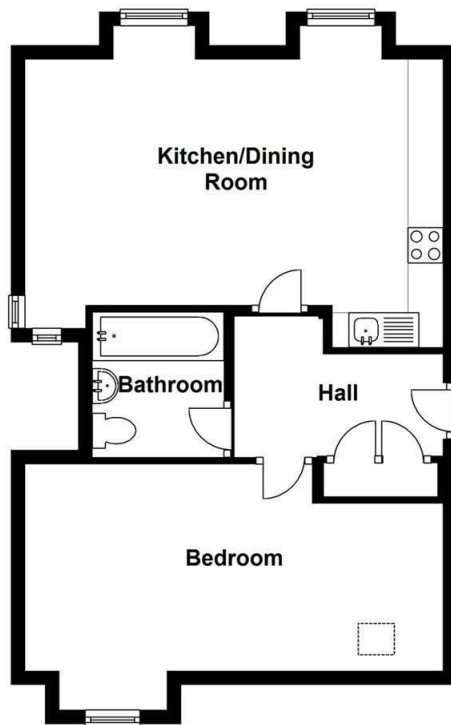
Bedroom

Currently split into two sections by stud wall.

Bathroom



Top Floor



IMPORTANT NOTICE TO PROSPECTIVE PURCHASERS

We are not qualified to test any apparatus, equipment, fixtures and fittings or services so cannot confirm that they are in working order or fit for their intended purpose. We do not have access to property deeds or lease documents so prospective purchasers should rely only on information given by their solicitors on relevant matters. Measurements are approximate and are only intended to provide a guide.

