



Wootton Drive
Hemel Hempstead, HP2 6JZ

squire | estates

Wootton Drive, Hemel Hempstead

Exclusive to Squire Estates, this spacious unfurnished one bedroom flat comprising of lounge, kitchen to front, double bedroom and bathroom with shower benefits further from gas central heating.

Available from 25th October 2024

Features


- One Bedroom Flat
- Applianced Kitchen
- Bathroom with Shower
- Gas Central Heating
- EPC Rating C
- Council Tax Band B
- Available From 24/10/2024

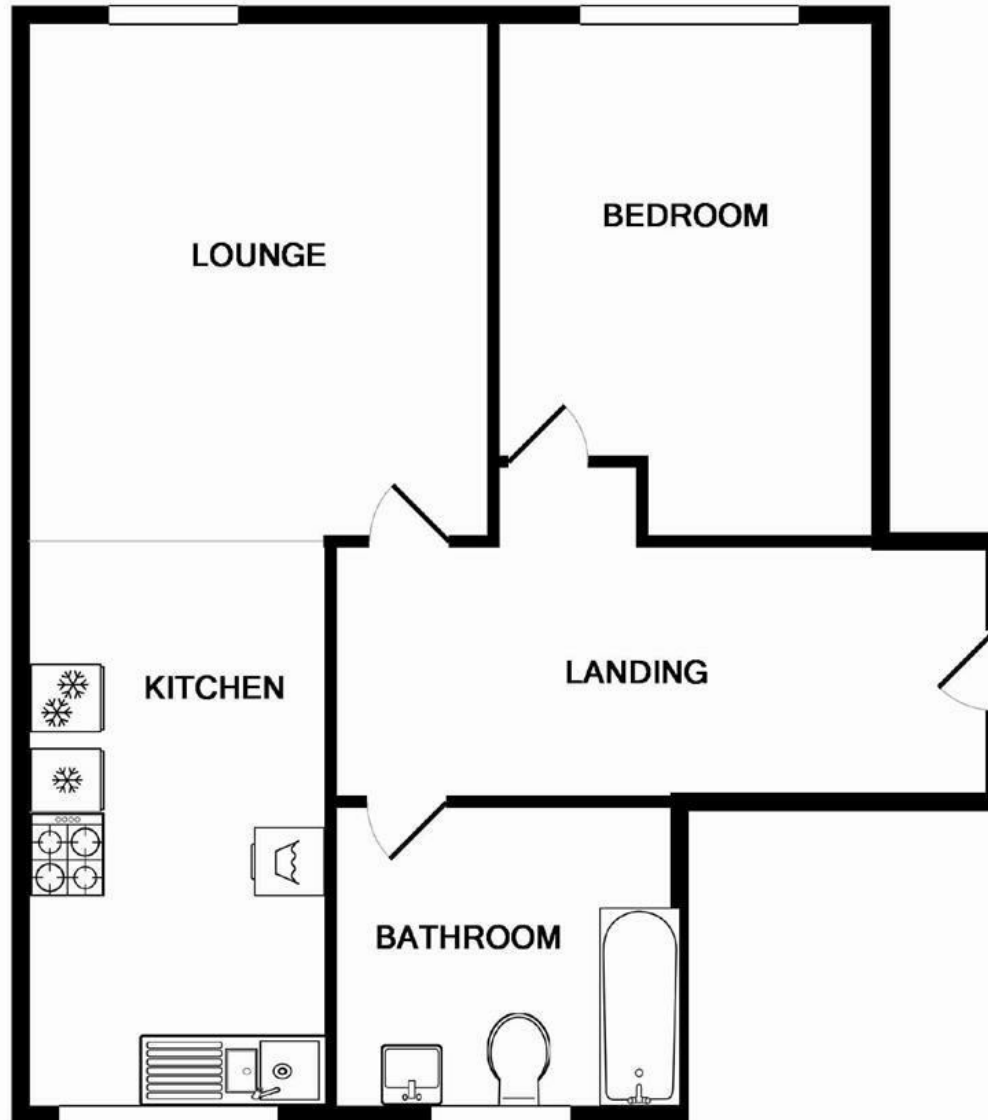
To Book a Viewing

Please contact Squire Estates on 01442 233533.

Please note we have not tested any apparatus, fixtures, fittings, or services. Interested parties must undertake their own investigation into the working order of these items. All measurements are approximate and photographs provided for guidance only.



Energy Efficiency Rating		
	Current	Potential
<i>Very energy efficient - lower running costs</i>		
(92 plus) A		
(81-91) B		
(69-80) C	76	78
(55-68) D		
(39-54) E		
(21-38) F		
(1-20) G		
<i>Not energy efficient - higher running costs</i>		
England & Wales	EU Directive 2002/91/EC	



Whilst every attempt has been made to ensure the accuracy of the floor plan contained here, measurements of doors, windows, rooms and any other items are approximate and no responsibility is taken for any error, omission, or mis-statement. This plan is for illustrative purposes only and should be used as such by any prospective purchaser. The services, systems and appliances shown have not been tested and no guarantee as to their operability or efficiency can be given

Made with Metropix ©2014

