



TO
LET

22 Kingcup Avenue, Hemel Hempstead

Guide Price £300,000 | £1,500 pcm

squire | estates

22 Kingcup Avenue

Hemel Hempstead, Hemel Hempstead

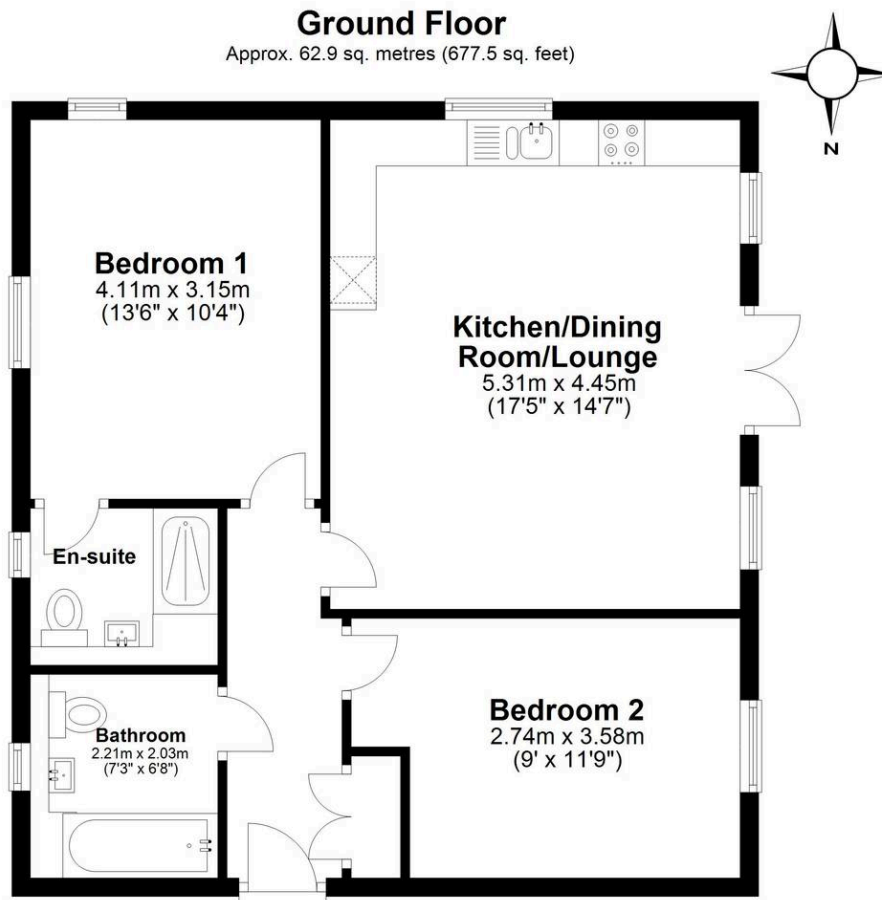
Council Tax band: D

Tenure: Leasehold

EPC Energy Efficiency Rating: B

EPC Environmental Impact Rating:

- Two bedroom apartment
- Ground floor
- En suite to principle bedroom
- CHAIN FREE
- Leverstock Green location
- Close to motorway links



Total area: approx. 62.9 sq. metres (677.5 sq. feet)

Disclaimer - Floor plan is for marketing purposes only and is to be used as a guide.
Plan produced using PlanUp.

squire | estates

67 Marlowes, Hemel Hempstead
Hertfordshire HP1 1LE
t. 01442 233533

www.squireestates.co.uk