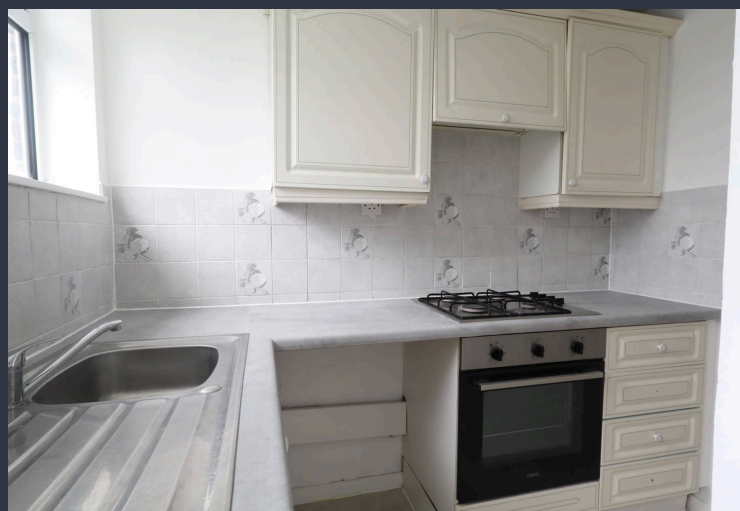


**TO
LET**



142 Gadebridge Road, Hemel Hempstead

£1,200 pcm

One bedroom ground floor Maisonette • Courtyard garden shared with 1 other flat • Newly refurbished Lounge and Bedroom • Large brick built external storage shed • Appliances included • Close to shops and amenities • Available mid January

squire | estates

Welcome to this one bedroom ground floor Maisonette with a shared courtyard garden situated close to shops and amenities.

The property has a convenient entrance porch, a newly refurbished lounge with a large picture window, a good size bedroom and a small applianced kitchen. In addition the bathroom has an electric shower over the bath.

Externally a private courtyard garden is shared with just one other flat and includes a large brick built external storage shed (ideal for bikes, tools, or anything else you need to tuck away).

The flat is available from mid January.

Don't hesitate to contact us now to arrange a viewing.

Council Tax band: B

EPC Energy Efficiency Rating: C

EPC Environmental Impact Rating: C



squire | estates

67 Marlowes, Hemel Hempstead, Hertfordshire HP1 1LE • t. 01442 233533 • www.squireestates.co.uk

