

**Laurel Close
Hemel Hempstead HP2 5ET
£1,850 Per calendar month**

- Three-bedroom semi-detached house
- Approx. 1,089 sq ft
- Large private rear garden
- Driveway to rear
- Unfurnished
- Kitchen with appliances: oven & hob, fridge-freezer, washing machine
- Gas central heating and double-glazed windows
- EPC C
- Council Tax Band D (Dacorum)
- Handy for local shops, buses and stations; schools within easy reach



67 Marlowes
Hemel Hempstead
Hertfordshire
HP1 1LE

01442 233533

lettings@squireestates.co.uk

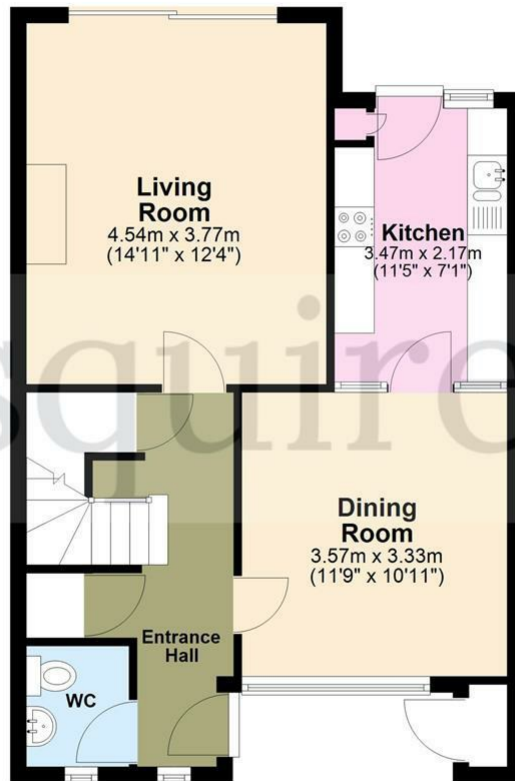
squireestates.co.uk

If you would like to apply for a property
please scan the QR code below...



Ground Floor

Approx. 50.4 sq. metres (542.6 sq. feet)



First Floor

Approx. 50.8 sq. metres (546.9 sq. feet)



Total area: approx. 101.2 sq. metres (1089.5 sq. feet)

The Floor Plan is not to Scale and measurements and areas shown are approximate and therefore should be used for illustrative purposes only. The plan has been prepared with due diligence and whilst we have confidence in the information produced it should not be relied upon. Maximum lengths and widths are represented on the plan. If there are any aspects of particular importance, you should carry out or commission your own inspection of the property. Copyright © SKMSTUDIO
Plan produced using PlanUp.□