

Marlowes
Hemel Hempstead HP1 1ER
£1,250 PCM

- Two double bedrooms
- Recently redecorated throughout
- Excellent central location- surrounded by shops, cafes, and amenities
- Bright and spacious living/dining room
- Fully electric heating
- Modern bathroom with electric shower
- No parking available — public parking available nearby from £4 per day on Waterhouse Street
- Council Tax Band: B
- EPC Rating: E
- Available 19th November 2025



67 Marlowes
Hemel Hempstead
Hertfordshire
HP1 1LE

01442 233533

lettings@squireestates.co.uk

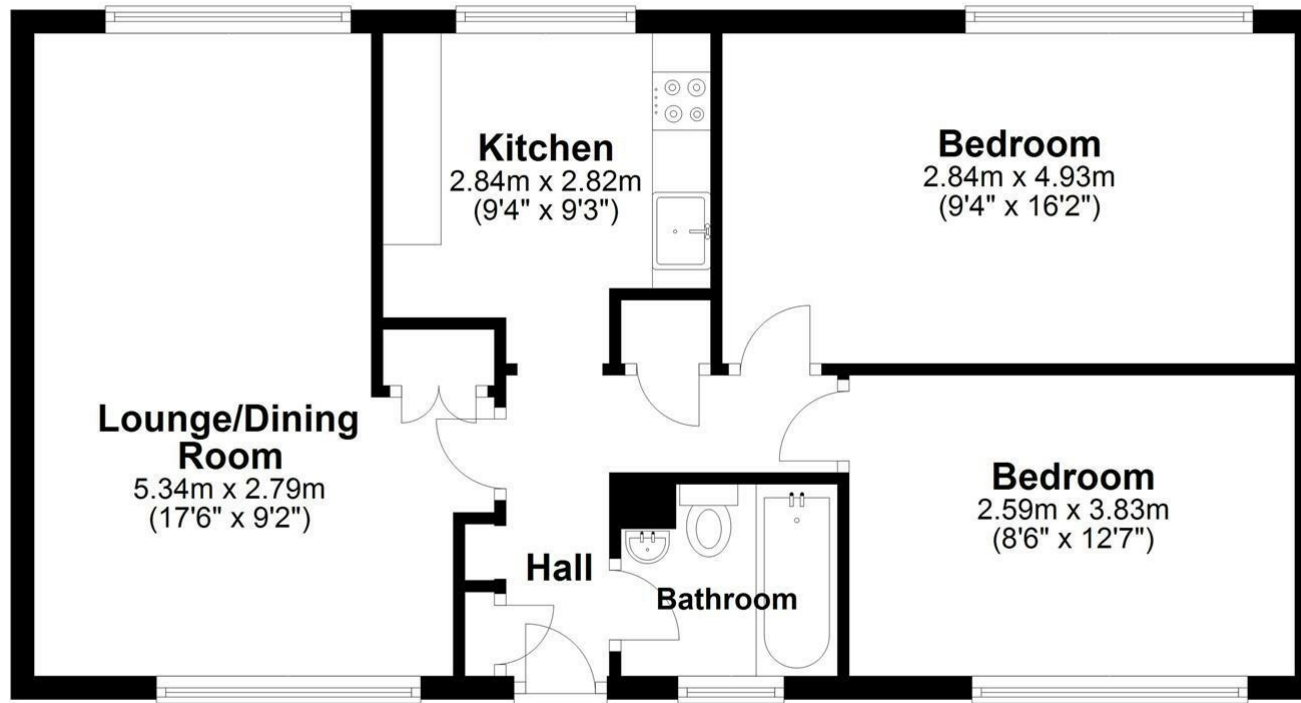
squireestates.co.uk

If you would like to apply for a property
please scan the QR code below...



Floor Plan

Approx. 59.0 sq. metres (635.1 sq. feet)



Total area: approx. 59.0 sq. metres (635.1 sq. feet)

Disclaimer - Floor plan is for marketing purposes only and is to be used as a guide - SKM Studio
Plan produced using PlanUp.