

**Half Moon Meadow  
Hemel Hempstead HP2 7SD  
£1,025 PCM**

- Stylish one-bedroom top-floor flat in peaceful cul-de-sac setting.
- Double bedroom — ideal for couple or single occupant.
- Fully fitted kitchen with white cabinetry and modern tiling.
- Bathroom fitted with bath and shower unit.
- Spacious lounge with light and character, including archway into kitchen.
- Allocated parking space included.
- EPC Rating D
- Council Tax Band B
- New Carpet
- Available Now



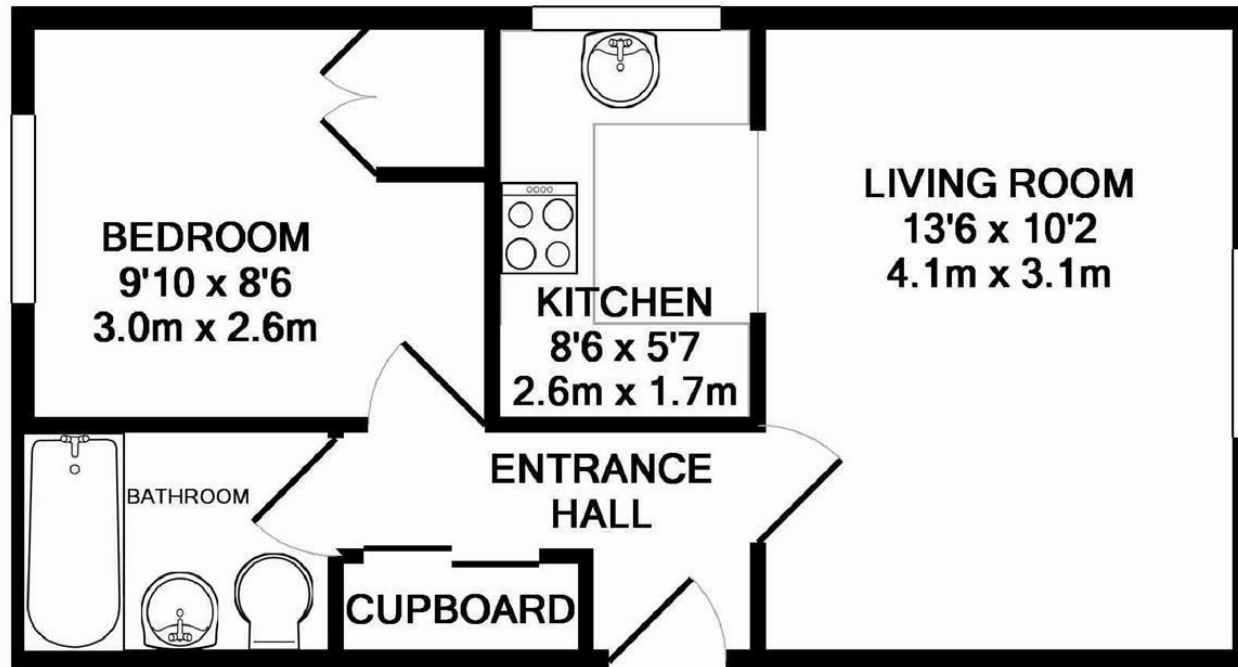
67 Marlowes  
Hemel Hempstead  
Hertfordshire  
HP1 1LE

01442 233533

[lettings@squirestates.co.uk](mailto:lettings@squirestates.co.uk)

[squirestates.co.uk](http://squirestates.co.uk)

If you would like to apply for a property  
please scan the QR code below...



TOTAL APPROX. FLOOR AREA 346 SQ.FT. (32.1 SQ.M.)

Whilst every attempt has been made to ensure the accuracy of the floor plan contained here, measurements of doors, windows, rooms and any other items are approximate and no responsibility is taken for any error, omission, or mis-statement. This plan is for illustrative purposes only and should be used as such by any prospective purchaser. The services, systems and appliances shown have not been tested and no guarantee as to their operability or efficiency can be given

Made with Metropix ©2014