



Pelham Court
Hemel Hempstead, HP2 4UW

squire | estates

Pelham Court, Hemel Hempstead

Located in the sought-after area of Leverstock Green, this well presented one-bedroom apartment offers modern living in a vibrant community. Situated on the 5th floor, the property enjoys elevated views and plenty of natural light throughout and would be great for ideal for first-time buyers, professionals, or investors alike.

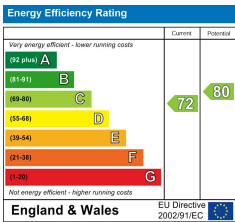
The apartment features a spacious open-plan living and dining area, leading onto a private balcony—perfect for enjoying your morning coffee or relaxing in the evening. The kitchen is well-appointed with ample wall and base units with co-ordinated work surfaces, and space for freestanding appliances.

The generously sized bedroom benefits from a fitted cupboard for storage, while the bathroom is complete with shower over bath, sink and WC.

Additionally the property features include secure entry, lift access, and parking.

Positioned in the heart of Leverstock Green, with its charming cricket green, local shops, cafés, and pubs, this home is just a short drive from St Albans and the M1 motorway — making it ideal for commuters.

No upper chain



Features

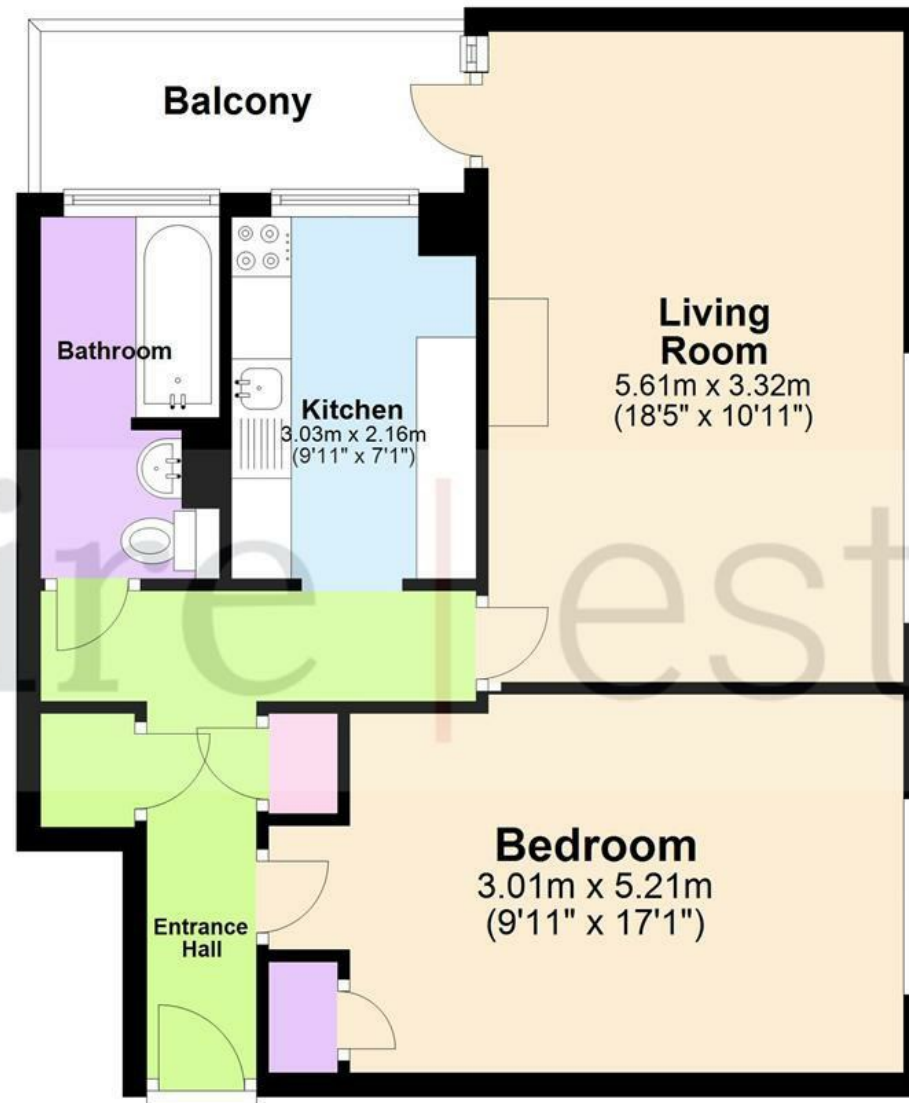
- One Bedroom Flat
- 5th Floor
- Lounge / dining room with balcony
- Leverstock Green location
- Lift access
- Close to local transport
- Close to local shops
- CHAIN FREE
- Lease being extended to 172 years

Scan the QR Code to submit an offer



Floor Plan

Approx. 55.1 sq. metres (592.9 sq. feet)



Total area: approx. 55.1 sq. metres (592.9 sq. feet)

The Floor Plan is not to Scale and measurements and areas shown are approximate and therefore should be used for illustrative purposes only. The plan has been prepared with due diligence and whilst we have confidence in the information produced it should not be relied upon. Maximum lengths and widths are represented on the plan. If there are any aspects of particular importance, you should carry out or commission your own inspection of the property. Copyright © SKMSTUDIO
Plan produced using PlanUp.

