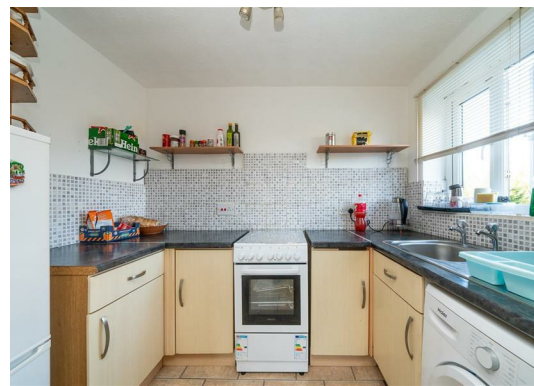


**Half Moon Meadow  
Hemel Hempstead HP2 7SD  
£995 PCM**

- One bedroom apartment
- Ground floor
- FURNISHED
- EPC - D
- Council tax - B
- Close to Industrial estate
- Available from 26/07/25
- Ample parking
- Holding deposit - £229





67 Marlowes  
Hemel Hempstead  
Hertfordshire  
HP1 1LE

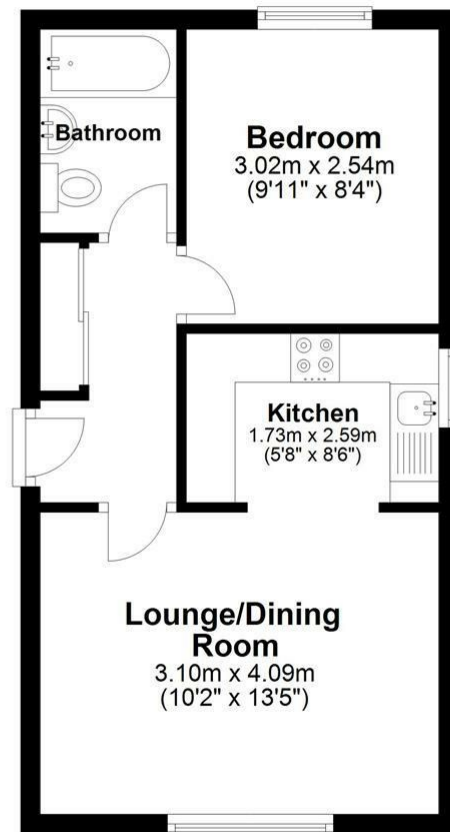
01442 233533

homes@squireestates.co.uk

squireestates.co.uk

### Ground Floor

Approx. 32.9 sq. metres (353.9 sq. feet)



Total area: approx. 32.9 sq. metres (353.9 sq. feet)

Disclaimer - Floor plan is for marketing purposes only and is to be used as a guide - SKM Studio  
Plan produced using PlanUp.