



Winifred Road
Hemel Hempstead, HP3 9DX

squire | estates

Winifred Road, Hemel Hempstead

Located on Winifred Road in Apsley, this end-terrace Victorian house offers a practical blend of character and modern living. With two double bedrooms, the property is ideal for couples, small families, or those seeking additional space.

The ground floor features an open-plan lounge and dining area, a fully fitted kitchen, and a separate utility room. The family bathroom includes a shower over the bath.

The property also benefits from a large rear garden.

Conveniently situated within walking distance of the mainline station and close to local shops and supermarkets, this home offers excellent access to transport links and amenities.

Available from 12/07/25

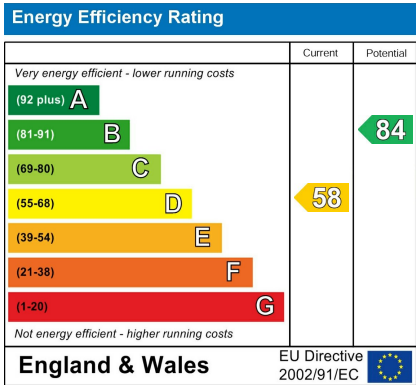
Features

- Two Bed Victorian House
- Walking distance to mainline station / Town centre
- PET FRIENDLY
- Bright & spacious
- Fully applianced kitchen
- Available from 12/07/25
- EPC - D
- Council tax - C
- Holding deposit - £369

To Book a Viewing

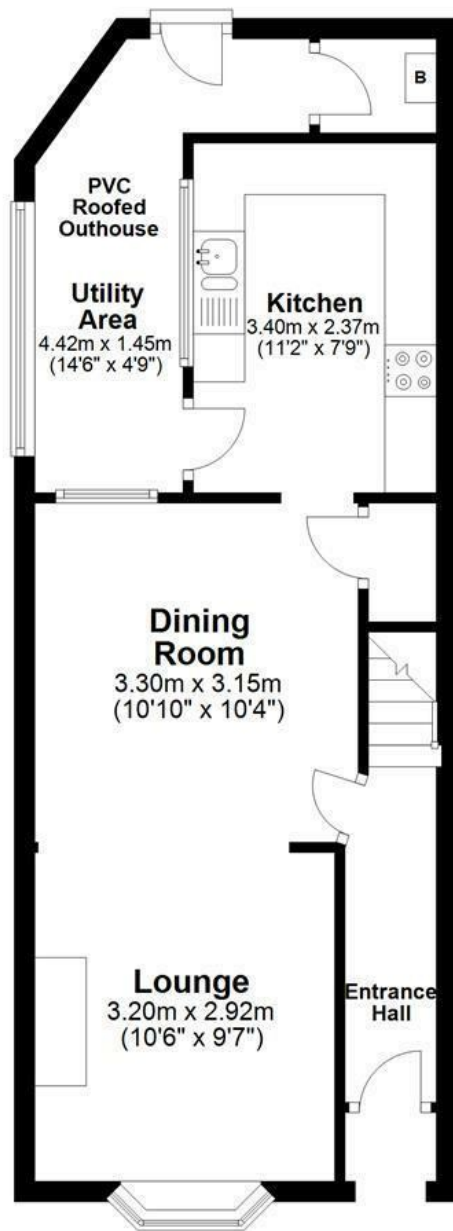
Please contact Squire Estates on 01442 233533.

Please note we have not tested any apparatus, fixtures, fittings, or services. Interested parties must undertake their own investigation into the working order of these items. All measurements are approximate and photographs provided for guidance only.



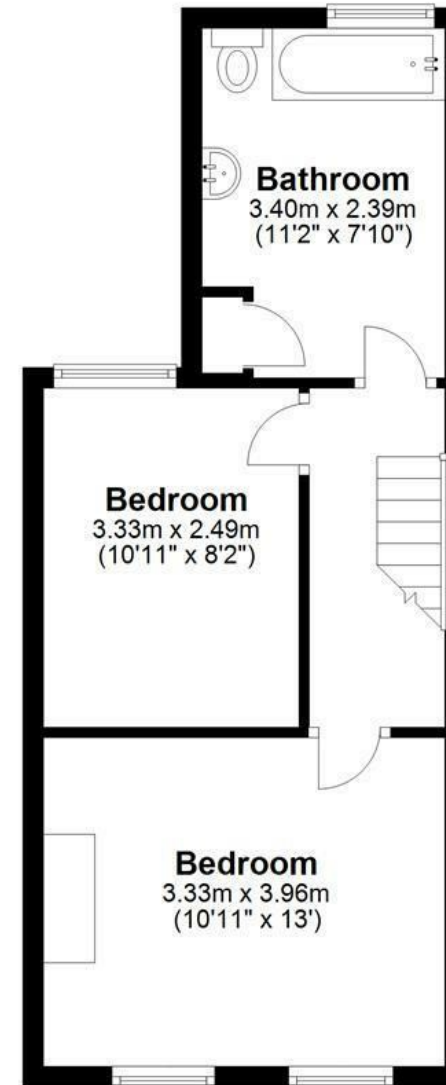
Ground Floor

Approx. 43.0 sq. metres (463.3 sq. feet)



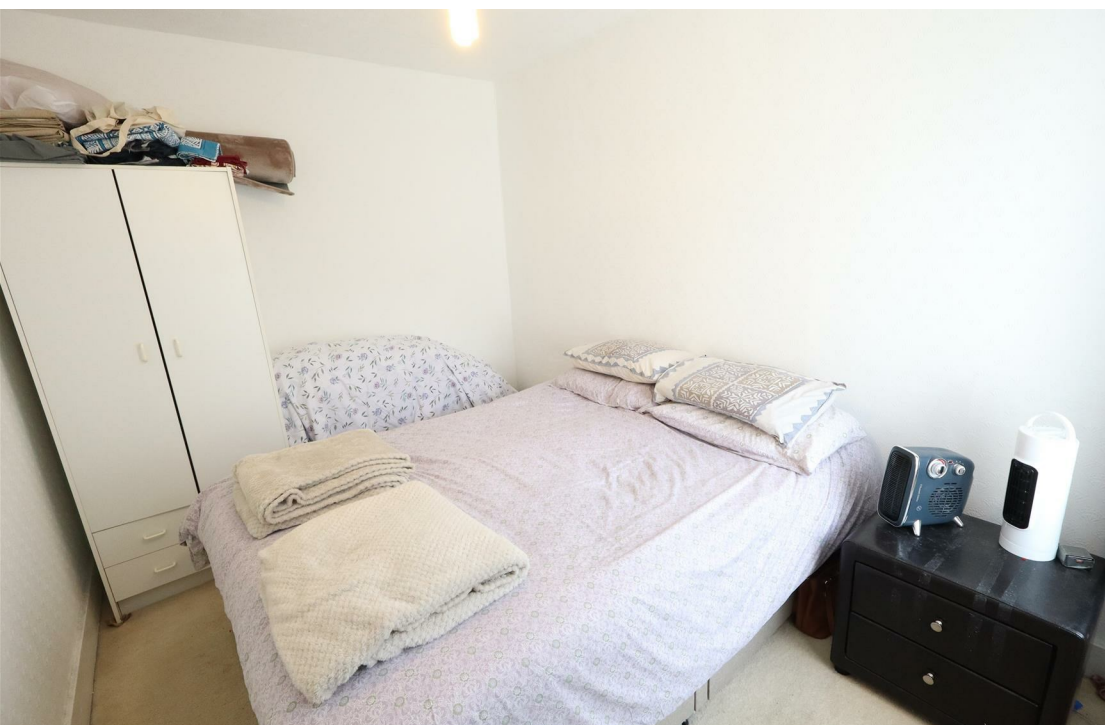
First Floor

Approx. 34.9 sq. metres (375.7 sq. feet)



Total area: approx. 77.9 sq. metres (839.0 sq. feet)

Disclaimer - Floor plan is for marketing purposes only and is to be used as a guide - SKM Studio
Plan produced using PlanUp.



67 Marlowes, Hemel Hempstead, Hertfordshire, HP1 1LE
01442 233533 | www.squirestates.co.uk