

**Astley Road  
Hemel Hempstead HP1 1HU  
£1,500 PCM**

- Two Bedroom Semi-Detached House
- Redecorated with new flooring
- Two Double Bedrooms
- Walking Distance To Town Centre
- Off Road Parking
- Gas Central Heating
- Available Now
- EPC - D
- Council Tax - C
- Holding Deposit - £346



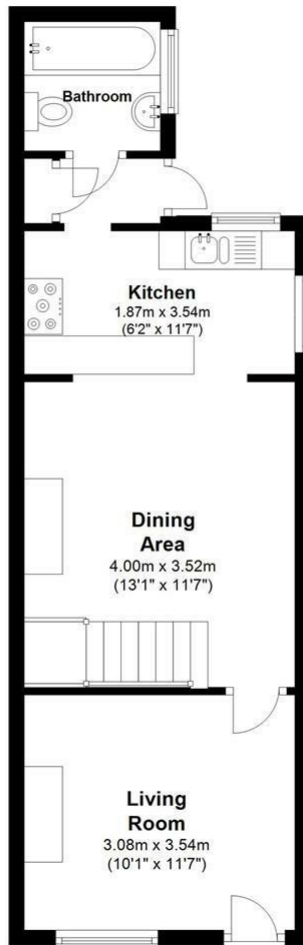
67 Marlowes  
Hemel Hempstead  
Hertfordshire  
HP1 1LE

01442 233533

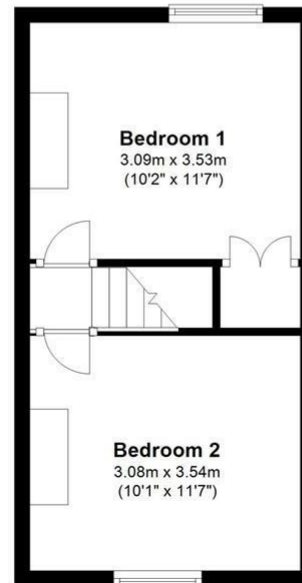
homes@squireestates.co.uk

squireestates.co.uk

**Ground Floor**  
Approx. 36.9 sq. metres (397.5 sq. feet)



**First Floor**  
Approx. 25.3 sq. metres (272.8 sq. feet)



Total area: approx. 62.3 sq. metres (670.3 sq. feet)