



squire | estates

Warners End Road
Hemel Hempstead, HP1 3QE

squire | estates

Warners End Road, Hemel Hempstead

This beautifully refurbished TWO-bedroom GROUND FLOOR maisonette offers the perfect blend of modern living and outdoor entertaining. Recently renovated throughout. Situated in the popular Warners End area, close by local shops.

The property boasts a contemporary kitchen with ample wall and base units, and work tops to compliment. Built in oven, and space for washing machine and fridge/freezer. Bright lounge to the front of the property.

One double bedroom and a good size single bedroom. The bathroom is elegantly designed, featuring bath with shower over, pedestal sink, and WC.

Step outside to enjoy your own private garden, a peaceful retreat with a paved patio area ideal for al fresco dining or simply unwinding after a long day.

The property is located in a convenient location within walking distance to shops, doctors and schools. The property is being sold chain free so is perfect for first time buyers or investors.

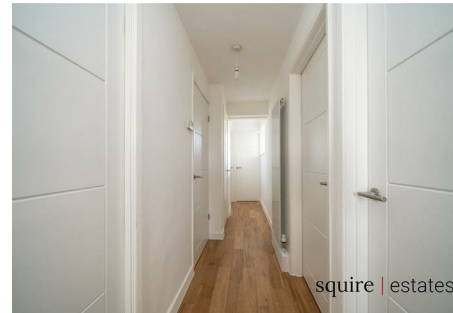
Features

- Two bedrooms
- Ground floor
- Private rear garden
- Fully renovated
- Close to local shops
- Close to schools

To Book a Viewing

Please contact Squire Estates on 01442 233533.

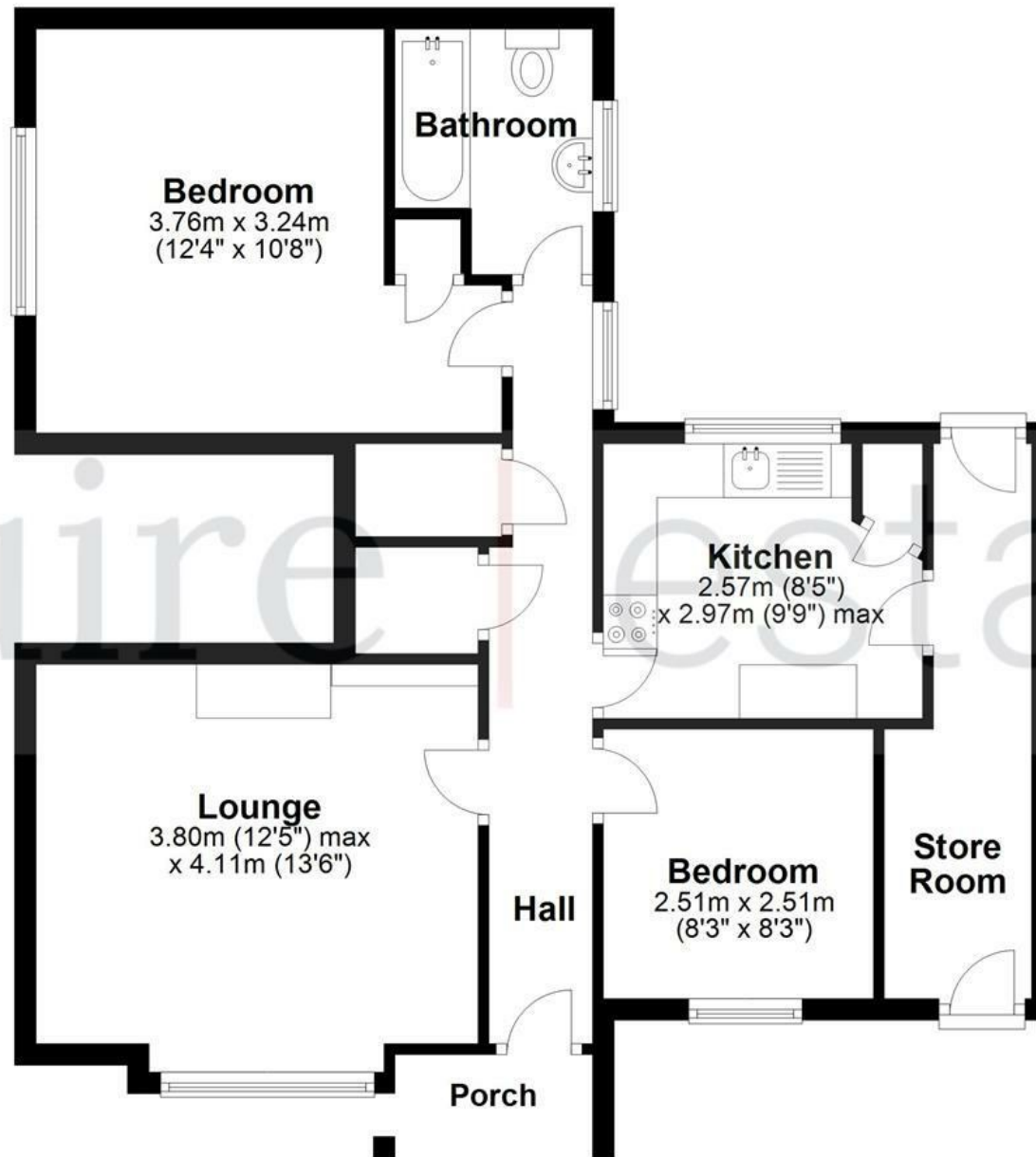
Please note we have not tested any apparatus, fixtures, fittings, or services. Interested parties must undertake their own investigation into the working order of these items. All measurements are approximate and photographs provided for guidance only.



Energy Efficiency Rating		Current	Potential
Very energy efficient - lower running costs			
(92 plus) A			
(81-91) B			
(69-80) C			
(55-68) D			
(39-54) E			
(21-38) F			
(1-20) G			
Not energy efficient - higher running costs			
		68	75
England & Wales		EU Directive 2002/91/EC	

Ground Floor

Approx. 67.4 sq. metres (725.2 sq. feet)



Total area: approx. 67.4 sq. metres (725.2 sq. feet)

Disclaimer - Floor plan is for marketing purposes only and is to be used as a guide - SKM Studio
Plan produced using PlanUp.

