



Leverstock Green Road
Hemel Hempstead, HP3 8PR

squire | estates

Leverstock Green Road, Hemel Hempstead

****6-12 month rental** Pets Accepted**** Squire Estates are pleased to market this three bedroom bungalow in a tree lined road in Leverstock Green. Situated a short walk from the village shops, highly regarded schools and commuter links. Internally the property comprises of a well appointed fitted kitchen with island style breakfast bar, large reception lounge with feature fireplace and patio doors to the rear garden, separate dining room or study. There is also two bedrooms to the ground floor, the master bedroom with a private en suite and family bathroom. In the middle of the bungalow is a charming inner hall way with a feature gallery style ' Georgian ' window looking in the dining room and stairs leading to bedroom three. To the rear is a wonderful rear garden with a range of mature trees and shrubs, whilst to the front is block paved parking for three vehicles. Early viewings are strongly recommended. Available from 24/08/24

Features


- Detached Bungalow
- Available from 24/08/24
- Three Bedrooms
- En Suite To Master
- Kitchen Diner
- Large Reception Lounge
- Dining Room / Study
- Driveway For Three Vehicles
- 6-12 month rental
- Pets Accepted

To Book a Viewing

Please contact Squire Estates on 01442 233533.

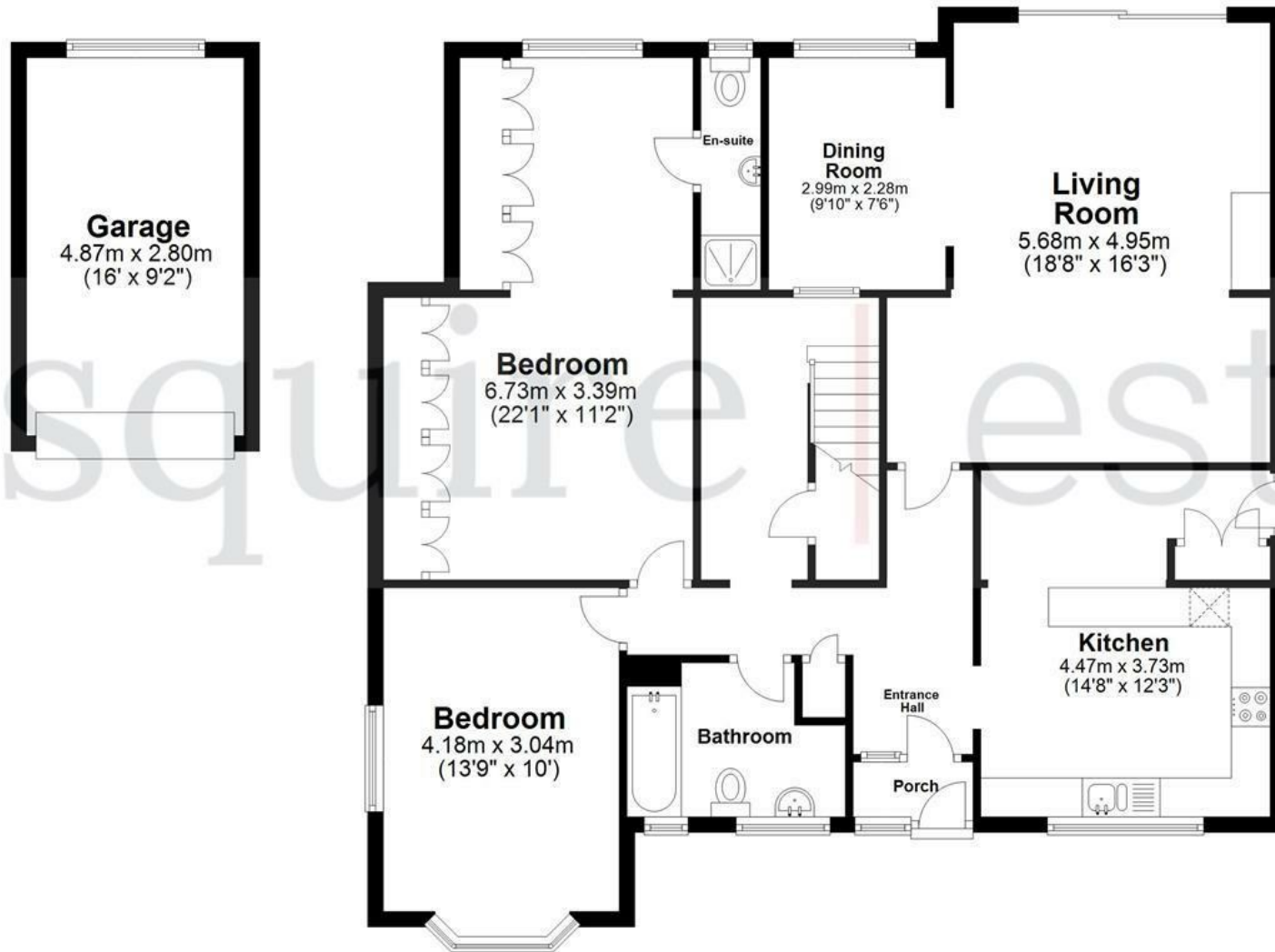
Please note we have not tested any apparatus, fixtures, fittings, or services. Interested parties must undertake their own investigation into the working order of these items. All measurements are approximate and photographs provided for guidance only.



| Energy Efficiency Rating | | |
|--|---------|---|
| | Current | Potential |
| <i>Very energy efficient - lower running costs</i> | | |
| 92 plus) A | | |
| (81-91) B | | |
| (69-80) C | | 75 |
| (55-68) D | | |
| (39-54) E | 52 | |
| (21-38) F | | |
| (1-20) G | | |
| <i>Not energy efficient - higher running costs</i> | | |
| England & Wales | | EU Directive 2002/91/EC  |

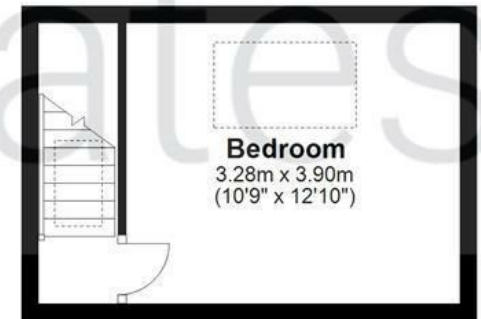
Ground Floor

Approx. 127.9 sq. metres (1377.1 sq. feet)



First Floor

Approx. 16.2 sq. metres (173.9 sq. feet)



Total area: approx. 144.1 sq. metres (1551.0 sq. feet)

Disclaimer - Floor plan is for marketing purposes only and is to be used as a guide - SKM Studio
Plan produced using PlanUp.

