

**£98,500**  
**2 Bed Apartment**  
**located in Hall Street**

  
**REDSTONES**  
The Property Experts

**Hall Street  
Wednesbury  
WS10 8NW**



**£98,500**

\*\*\*SUIT FIRST TIME BUYERS OR INVESTORS\*\*\*A two bedroom first floor apartment in the popular Avenue development in Wednesbury. The accommodation comprises of a hallway, lounge, kitchen, dining area, two bedrooms and bathroom. The property benefits from electric heating, UPVC double glazed windows, entry phone and allocated parking space.

\*\*\*SUIT FIRST TIME BUYERS OR INVESTORS\*\*\*A two bedroom first floor apartment in the popular Avenue development in Wednesbury. The accommodation comprises of a hallway, lounge, kitchen, dining area, two bedrooms and bathroom. The property benefits from electric heating, UPVC double glazed windows, entry phone and allocated parking space.

**Hallway**

Carpet, electric storage heater, entry phone, doors off.

**Lounge**

11'5" x 11'1"

Open plan to kitchen / dining area and having carpet, electric storage heater, UPVC double glazed window.

**Kitchen / Dining Area**

14'9" x 9'10"

Dining area having carpet, electric storage heater, kitchen having vinyl flooring, various wall units, splash back tiling, rolled edge worksurface with cupboards and drawers under, inset stainless steel sink, integrated electric oven and fitted four ring electric hob with extractor over.

**Bedroom One**

11'9" x 9'6"

Carpet, electric heater, UPVC double glazed window.

**Bedroom Two**

13'5" x 8'2"

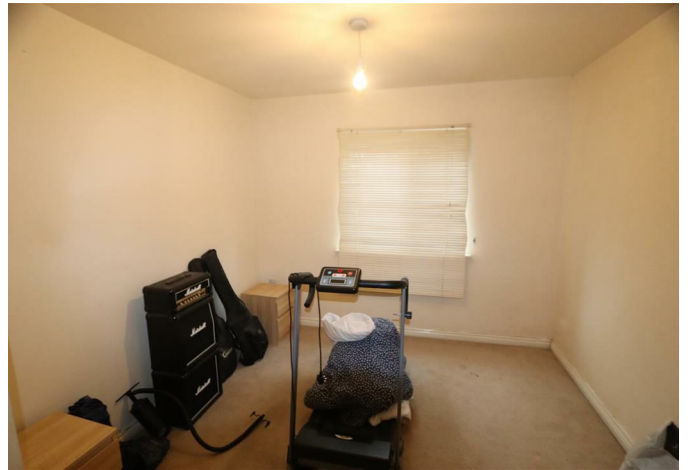
Carpet, electric heater, double glazed window, cupboard with water cylinder.

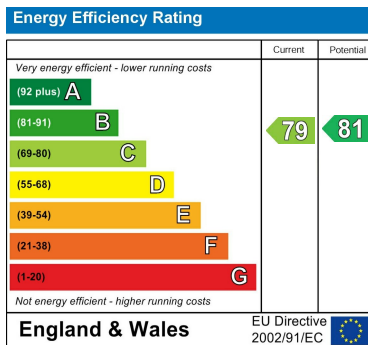
**Bathroom**

Wall mounted fan heater, part tiled walls, bathroom suite comprising low level WC, pedestal wash hand basin, bath with electric shower over.

**Outside**

Allocated parking space.





## DIRECTIONS

### CONTACT

West Midlands House  
Gypsy Lane  
Willenhall  
West Midlands  
WV13 2HA

E: [info@redstones.co.uk](mailto:info@redstones.co.uk)  
T: 01922 235 350  
<http://www.redstones.co.uk>

