



£195,000

3 Bed House - Terraced
located in Mitre Road


REDSTONES
The Property Experts

Mitre Road
Cheslyn Hay
Walsall
WS6 7HN



£195,000

A newly renovated three bedroom mid terraced family home in a sought after village location. The accommodation comprises of a hallway, lounge, fitted kitchen and utility. On the first floor are three bedrooms and the bathroom. The property benefits from UPVC double glazed windows, gas central heating and has front and rear gardens. Needs to be viewed to appreciate what is on offer.

Hallway

Wood effect laminate flooring, frosted UPVC double glazed door and window to front, ceiling spot lights, stairs off, doors off.

Lounge

15'5" x 10'5"

Wood effect laminate flooring, radiator, UPVC double glazed windows to front and rear, ceiling spot lights.

Kitchen/Breakfast Room

14'5" x 10'5"

Wood effect laminate flooring, radiator, UPVC double glazed window and Bi folding doors to rear, ceiling spot lights, fitted kitchen comprising various wall units, marble effect splash back tiling, marble effect worksurface with cupboards and drawers below, inset sink with mixer tap over, integrated electric oven, fitted four ring gas hob with extractor over, integrated fridge freezer.

Utility

8'2" x 7'2"

Wood effect laminate flooring, UPVC double glazed window to front, plumbing for washing machine, electric meter, gas meter.

Stairs / Landing

Wood effect laminate flooring on landing, radiator, cupboard with Glow Worm combi boiler, doors off.

Bedroom One

15'5" x 10'5"

Wood effect laminate flooring, radiator, UPVC double glazed windows to front and rear.

Bedroom Two

10'5" x 9'2"

Wood effect laminate flooring, radiator, UPVC double glazed window to front, built in cupboard.

Bedroom Three

9'10" x 6'6"

Wood effect laminate flooring, radiator, UPVC double glazed window to rear.

Bathroom

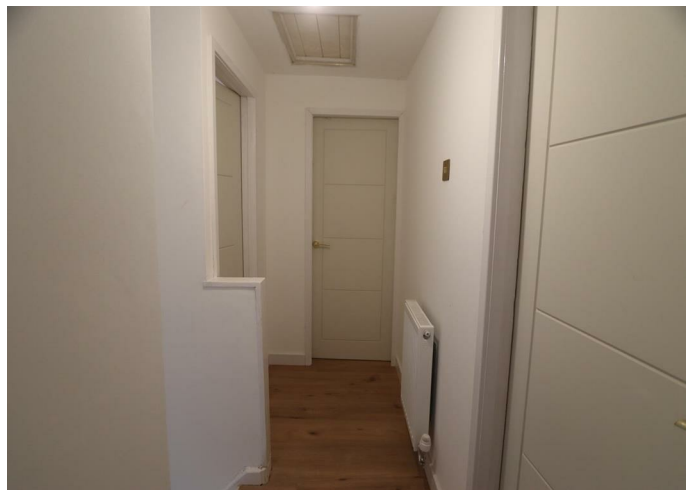
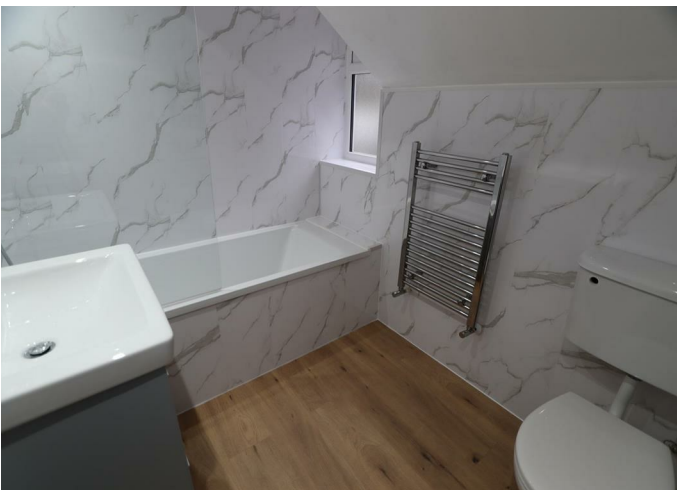
7'6" x 5'6"

Wood effect laminate flooring, chrome towel radiator, frosted UPVC double glazed windows to rear, ceiling spot lights, marble effect cladded walls, WC, vanity wash hand basin, bath with shower screen and mixer tap/shower over.

Outside

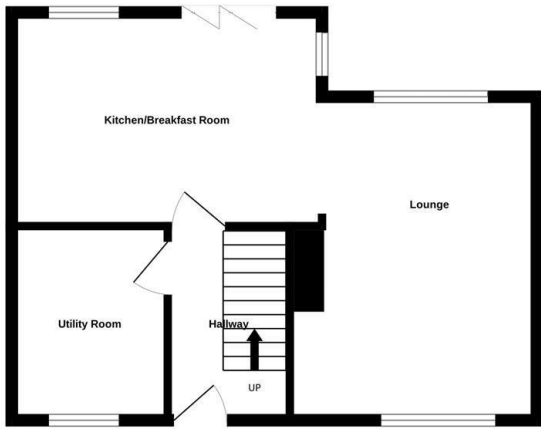
Pathway and various shrubs/bushes to front, enclosed multi level at rear.



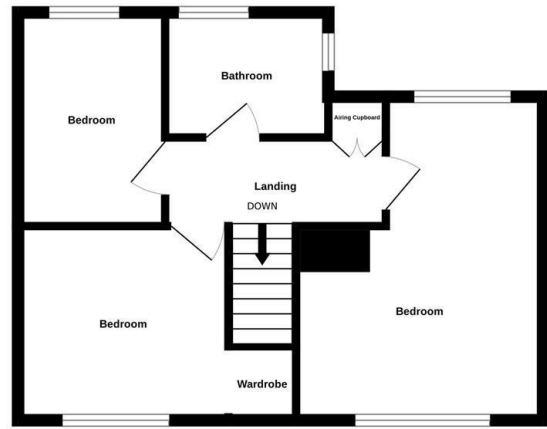




Ground Floor

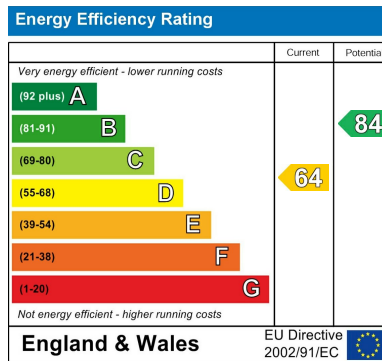


1st Floor



30 Mitre Road Ws6 7hn

Measurements are approximate. Not to scale. Illustrative purposes only
Made with Metropix ©2024



DIRECTIONS

CONTACT

West Midlands House
Gypsy Lane
Willenhall
West Midlands
WV13 2HA

E: info@redstones.co.uk
T: 01922 235 350
<http://www.redstones.co.uk>

