



TAYLOR GARNIER
ESTATE AGENTS

Spindlewood
Waltham Chase
Price Guide £320,000

Spindlewood,
Winchester Road
Waltham Chase
Hampshire
SO32 2LW

Price Guide £320,000

- Semi Detached House
- Ground Floor Extension
- Off Road Parking
- Two Double Bedrooms (1 en-suite)

Description

A surprisingly spacious semi detached home set in the desirable area of Waltham Chase. The property has been thoughtfully extended on the ground floor with a large and spacious lounge having an impressive vaulted style ceiling and views over the garden to the rear. In general the rooms are very spacious and the property is offered in very good order throughout. The property also benefits from off road parking for a number of vehicles and a good sized private garden with a timber summer house to the rear.

AGENTS NOTE - The property benefits from planning consent to use the front reception room as a hairdressing salon. Should this use not be required the use will revert to its former residential usage 11/02533/FUL.



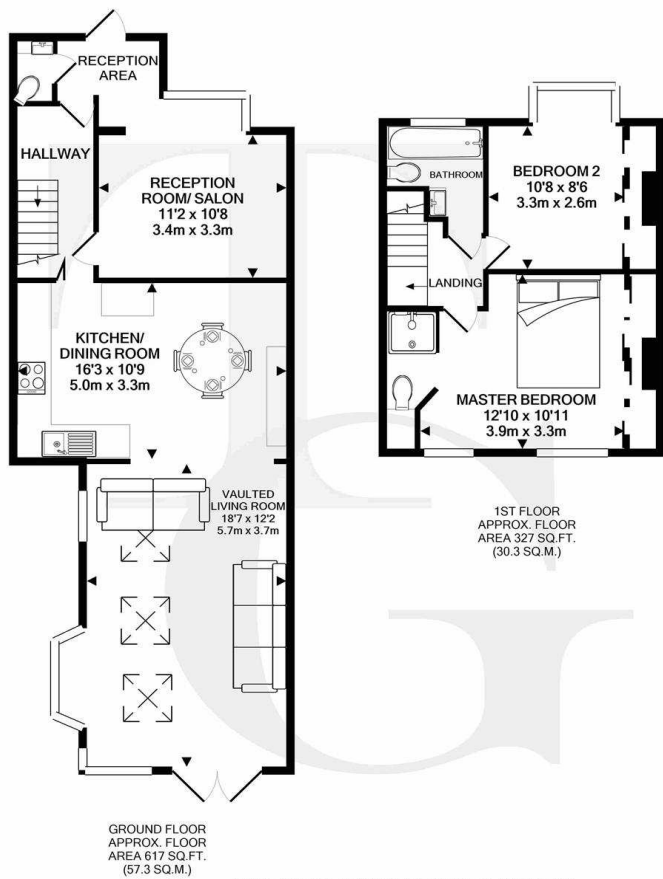
Location

Situated within the popular area of Waltham Chase. Waltham Chase has two general stores one of which has a post office within. There are also two pubs and a church within the village along with a primary school. Wickham and Bishops Waltham are both just over two miles distant.

Directions

From Wickham take the road sign posted to Bishops Waltham. Continue on this road and enter Waltham Chase. Continue, passing the small convenience shop/post office which is on the left. Spindlewood is then on the right hand side.





TOTAL APPROX. FLOOR AREA 944 SQ.FT. (87.7 SQ.M.)
Measurements are approximate. Not to scale. Illustrative purposes only
Made with Metropix ©2020

VIEWING ARRANGEMENTS

Strictly by appointment through Taylor Garnier.

FREE INDEPENDENT MORTGAGE ADVICE

To help save you time and money we are associated with Moneysprite Solent, who will be able to search the whole of the market for you. An appointed representative of Openwork Ltd which is authorized and regulated by the Financial Services Authority (FSA). To take advantage of this service please contact our offices on 01329 834844 or 023 9226 4060.

Services: Mains gas, electricity, water & drainage
(Taylor Garnier have not tested these services).

Local Authority: Winchester City Council 01962 840222

Council Band: 2020/2021 Band 'B'

EPC: Awaited



5a The Square, Wickham, Hampshire, PO17 5JQ

Tel: 01329 834844

Email: wickham@taylor-garnier.co.uk

www.taylor-garnier.co.uk



**TAYLOR
GARNIER**

Taylor Garnier Estate Agents wish to advise prospective purchasers that we have not checked the services or appliances. The sales particulars have been prepared as a guide only; any floor-plan or map is for illustrative purposes only. Taylor Garnier Estate Agents, for themselves and for the vendors or lessors of this property whose agents they are give notice that: the particulars have been produced in good faith; do not constitute any part of a contract; no person in the employment of Taylor Garnier Estate Agents has any authority to make or give any representation of warranty in relation to this property.