

## 53 Birchfield Lane

Oldbury, B69 2AZ

We are proud to present this charming 3-bedroom house located on Birchfield Lane, Oldbury. Situated in a peaceful residential area, this property offers a comfortable and spacious living space.

The house features a modern bathroom and three well-appointed bedrooms, perfect for a growing family or professionals looking for extra space. With a council tax band of A, this property is not only affordable but also conveniently located near local amenities and public transport links.

Oldbury is a vibrant town with a rich history, offering a variety of shops, restaurants, and cafes for you to explore. Take a leisurely stroll through the nearby parks or enjoy a day out at the local leisure centre. With easy access to the M5 motorway, commuting to Birmingham or Wolverhampton is a breeze.

This property is available for let from 16th May 2025. Don't miss out on the opportunity to make this house your home. Contact us today to arrange a viewing at Birchfield Lane, Oldbury B69.

**£1,095 Per Month**



# 53 Birchfield Lane

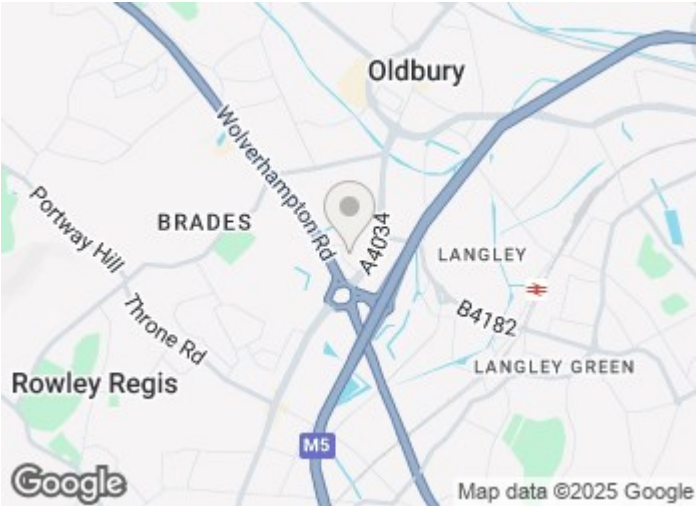
Oldbury, B69 2AZ

 3

 1

 2

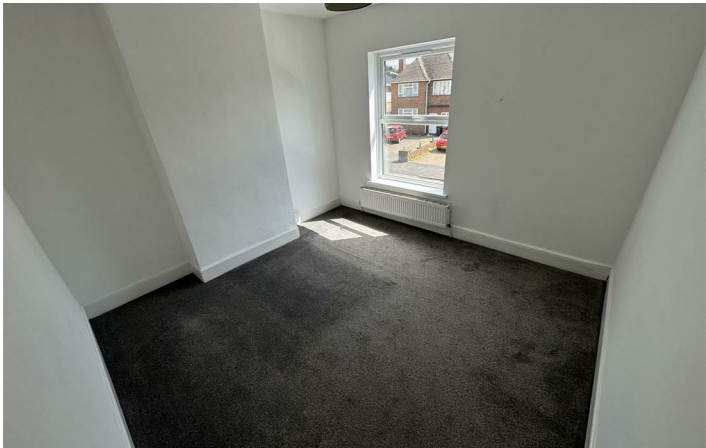
 D



[Directions](#)



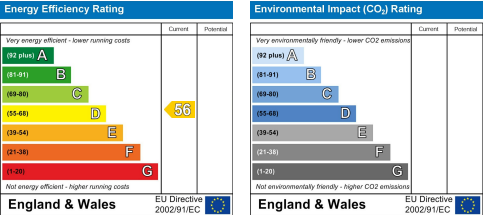






Floor Plan

These particulars, whilst believed to be accurate are set out as a general outline only for guidance and do not constitute any part of an offer or contract. Intending purchasers should not rely on them as statements of representation of fact, but must satisfy themselves by inspection or otherwise as to their accuracy. No person in this firms employment has the authority to make or give any representation or warranty in respect of the property.



543 Bristol Road, Selly Oak, Birmingham B29 6AU. T: 0121 472 3331 Website: [www.direct-housing.co.uk](http://www.direct-housing.co.uk)  
E-mail: [sellyoak@direct-housing.co.uk](mailto:sellyoak@direct-housing.co.uk) [lettings@direct-housing.co.uk](mailto:lettings@direct-housing.co.uk) [accounts@direct-housing.co.uk](mailto:accounts@direct-housing.co.uk)

