



14 Cadleigh Gardens

Birmingham, B17 0QB

£100ppw for 3 students.

Fantastic 3 bedroom student property in quiet area of Harborne briefly comprising of large open plan kitchen/living area, downstairs W/C, 3 spacious double bedrooms, and upstairs bathroom and downstairs shower. FULLY FURNISHED with all kitchen appliances and ample storage and study space in each bedroom.

EPC Rating - C

Council Tax band - B

Term - 12 months

Deposit - £500.00

£300 Per Week

14 Cadleigh Gardens

Birmingham, B17 0QB

 3

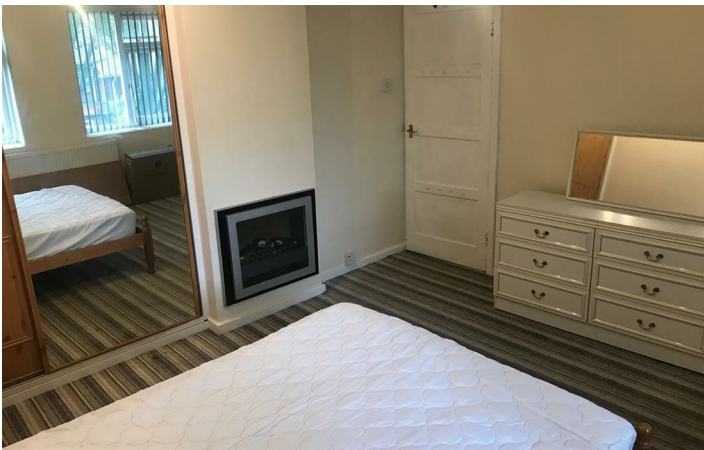
 2

 1

 C



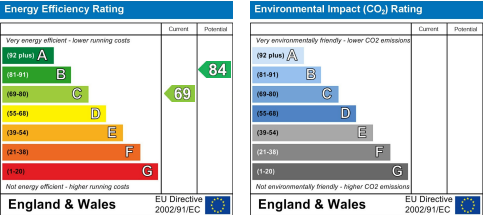
[Directions](#)





Floor Plan

These particulars, whilst believed to be accurate are set out as a general outline only for guidance and do not constitute any part of an offer or contract. Intending purchasers should not rely on them as statements of representation of fact, but must satisfy themselves by inspection or otherwise as to their accuracy. No person in this firms employment has the authority to make or give any representation or warranty in respect of the property.



543 Bristol Road, Selly Oak, Birmingham B29 6AU. T: 0121 472 3331 Website: www.direct-housing.co.uk
E-mail: sellyoak@direct-housing.co.uk lettings@direct-housing.co.uk accounts@direct-housing.co.uk

