

Southside St. John's Walk Birmingham, B5 4TH

Direct Housing are pleased to present this modern one bedroom apartment in the heart of Birmingham City Centre. This property benefits from an open plan kitchen and lounge area, a separate double bedroom and a good-sized bathroom with shower over bath.

This apartment is available from 1st September. Conveniently situated in the heart of China Town, walking distance to shops, bars, restaurants and fantastic transport links.

Term: 10-12 months

Deposit: £1125

EPC Rating: B

Council Tax Band: B (students exempt)

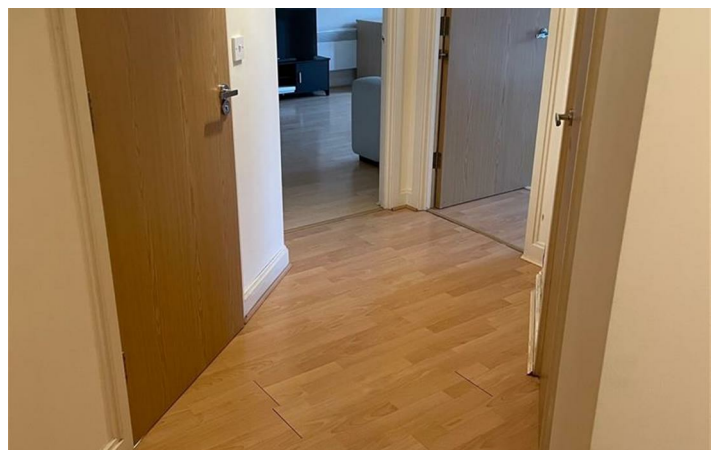
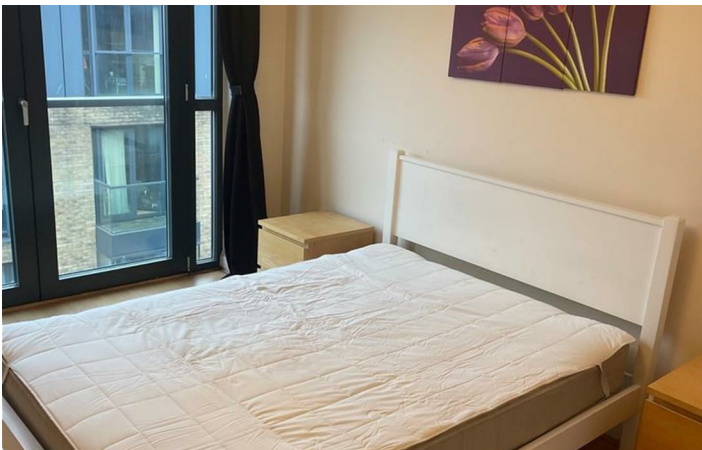
£975 Per Calendar Month

Southside St. John's Walk

Birmingham, B5 4TH



[Directions](#)



Floor Plan

These particulars, whilst believed to be accurate are set out as a general outline only for guidance and do not constitute any part of an offer or contract. Intending purchasers should not rely on them as statements of representation of fact, but must satisfy themselves by inspection or otherwise as to their accuracy. No person in this firm's employment has the authority to make or give any representation or warranty in respect of the property.



543 Bristol Road, Selly Oak, Birmingham B29 6AU. T: 0121 472 3331 Website: www.direct-housing.co.uk
E-mail: sellyoak@direct-housing.co.uk lettings@direct-housing.co.uk accounts@direct-housing.co.uk

