



## 636 Bristol Road Birmingham, B29 6BJ

\*\*\*ONE MONTH'S RENT HALF PRICE\*\*\*

July 2025-26

£135ppw including all bills excluding council tax and TV Licence.

Direct Housing are pleased to present this four bedroom apartment in a superb location on Bristol Road.

This four bedroom apartment has four en-suites and an additional toilet, a kitchen and dining area and a utility room that provides a washing machine and dryer. Central Heating is connected to Nest Control so you can adjust the temperature without having to get up!

Council Tax Band : A (students exempt)

Term Length : 12 Months

Deposit : £675 per person

EPC: E

**£540 Per Week**

# 636 Bristol Road

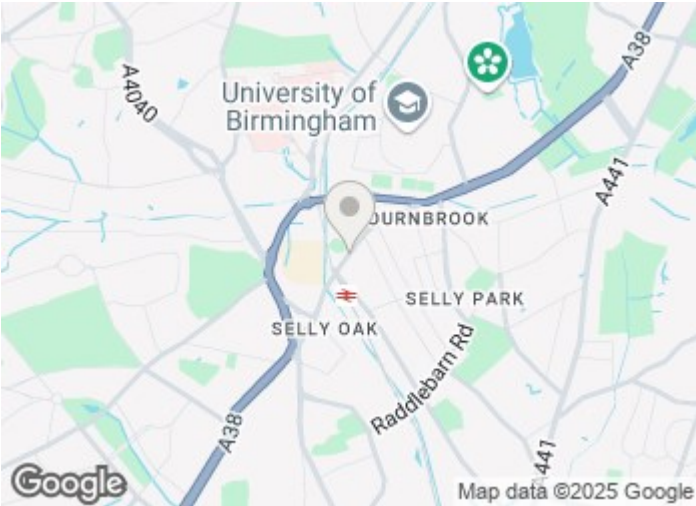
Birmingham, B29 6BJ

 4

 4

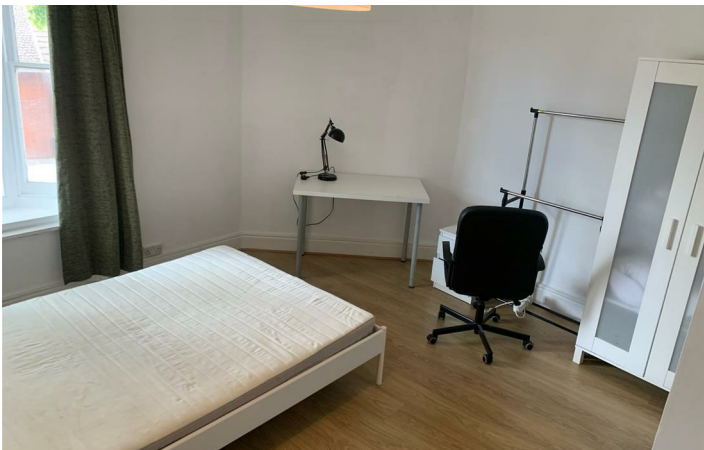
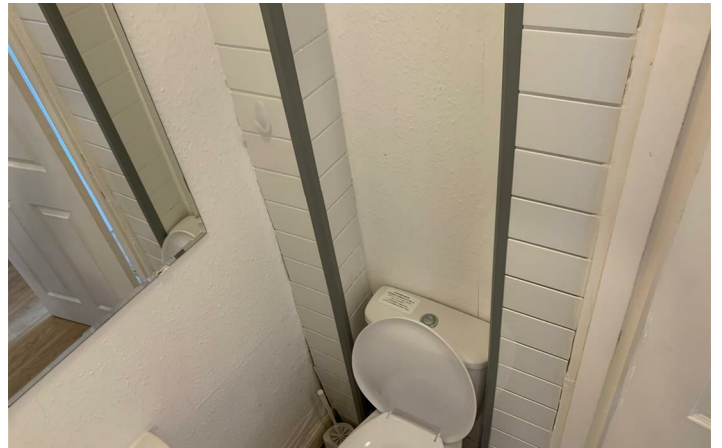
 0





[Directions](#)

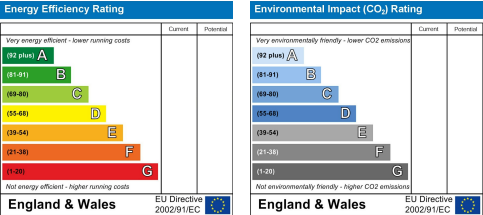






Floor Plan

These particulars, whilst believed to be accurate are set out as a general outline only for guidance and do not constitute any part of an offer or contract. Intending purchasers should not rely on them as statements of representation of fact, but must satisfy themselves by inspection or otherwise as to their accuracy. No person in this firms employment has the authority to make or give any representation or warranty in respect of the property.



543 Bristol Road, Selly Oak, Birmingham B29 6AU. T: 0121 472 3331 Website: [www.direct-housing.co.uk](http://www.direct-housing.co.uk)  
E-mail: [sellyoak@direct-housing.co.uk](mailto:sellyoak@direct-housing.co.uk) [lettings@direct-housing.co.uk](mailto:lettings@direct-housing.co.uk) [accounts@direct-housing.co.uk](mailto:accounts@direct-housing.co.uk)

