



10 Eldon Road Birmingham, B16 9DP

2025-2026 - £85 PPPW

Superb 6 bedroom property in Edgbaston comprising of great living area, modern fitted kitchen, 3 high-spec bathrooms and spacious double bedrooms. Also benefitting from garden area with decking. Street parking available.

Council Tax band B (students exempt).

Term - 12 months

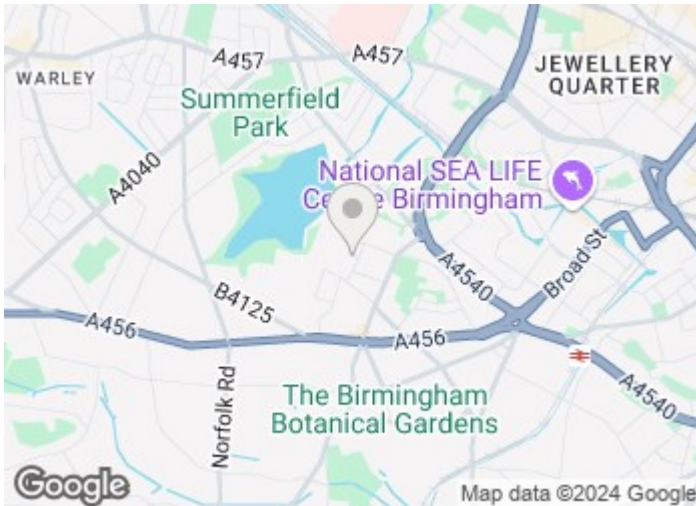
Deposit - £425.00

EPC rating band D.

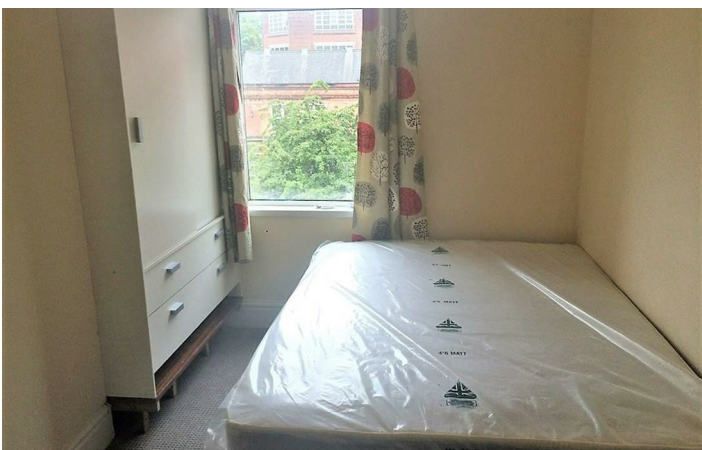
£510 Per Week

10 Eldon Road

Birmingham, B16 9DP

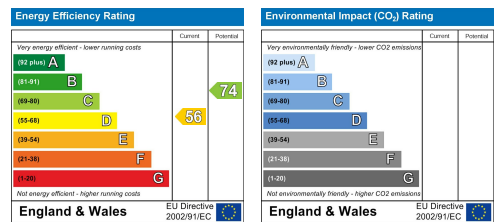


[Directions](#)



Floor Plan

These particulars, whilst believed to be accurate are set out as a general outline only for guidance and do not constitute any part of an offer or contract. Intending purchasers should not rely on them as statements of representation of fact, but must satisfy themselves by inspection or otherwise as to their accuracy. No person in this firm's employment has the authority to make or give any representation or warranty in respect of the property.



543 Bristol Road, Selly Oak, Birmingham B29 6AU. T: 0121 472 3331 Website: www.direct-housing.co.uk
 E-mail: sellyoak@direct-housing.co.uk lettings@direct-housing.co.uk accounts@direct-housing.co.uk

