



## 1 Sir Harrys Road Birmingham, B5 7QH

£80 Per person per week. Exceptional, modern 5 bed house, 1 shower and 2 toilets, fully furnished, Central heating and double glazing. Large living room and dining area, fully fitted kitchen with all appliances, including washer and dryer, aerials points in all rooms, front and rear garden, and plenty road parking spaces. The property has been refurbished and maintained to the highest of standards. Easy walk to Uni/Dental School/City Centre/Harborne/QE/Selly Oak.

EPC RATING BAND E  
Tax Band C

**£400 Per Week**

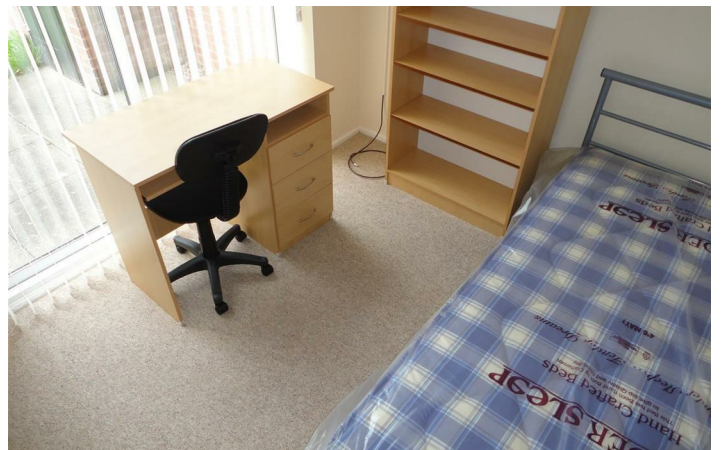
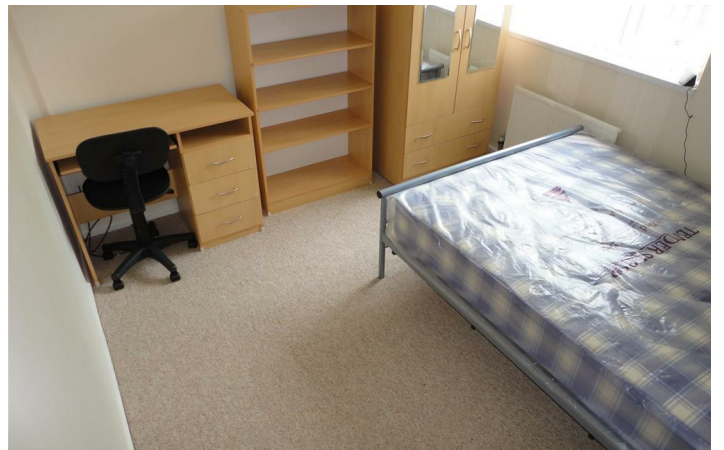
# 1 Sir Harrys Road

Birmingham, B5 7QH

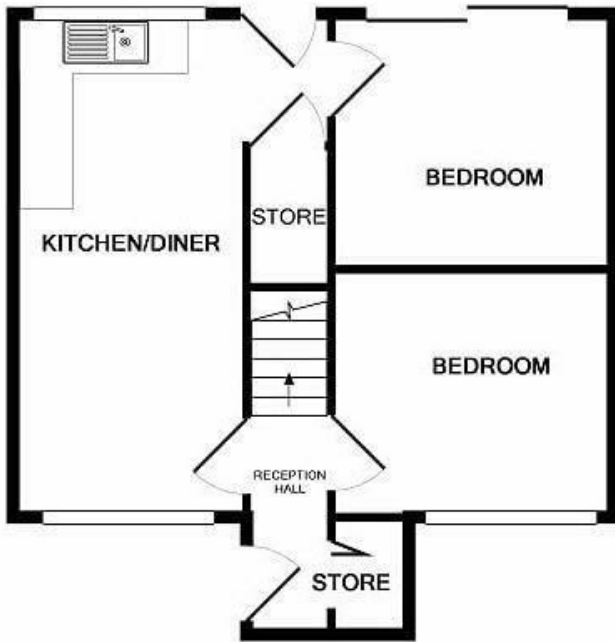


[Directions](#)

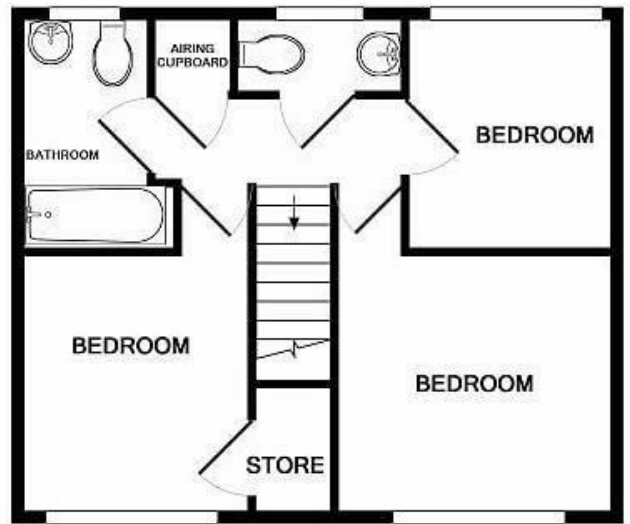




# Floor Plan



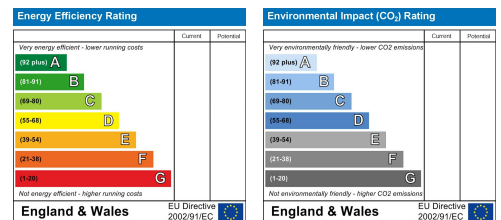
GROUND FLOOR  
APPROX. FLOOR  
AREA 445 SQ.FT.  
(41.3 SQ.M.)



1ST FLOOR  
APPROX. FLOOR  
AREA 417 SQ.FT.  
(38.8 SQ.M.)

SIR HARRYS RD, B5 7QH  
TOTAL APPROX. FLOOR AREA 862 SQ.FT. (80.1 SQ.M.)  
Measurements are approximate. Not to scale. Illustrative purposes only  
Made with Metropix ©2019

These particulars, whilst believed to be accurate are set out as a general outline only for guidance and do not constitute any part of an offer or contract. Intending purchasers should not rely on them as statements of representation of fact, but must satisfy themselves by inspection or otherwise as to their accuracy. No person in this firm's employment has the authority to make or give any representation or warranty in respect of the property.



543 Bristol Road, Selly Oak, Birmingham B29 6AU. T: 0121 472 3331 Website: [www.direct-housing.co.uk](http://www.direct-housing.co.uk)  
E-mail: [sellyoak@direct-housing.co.uk](mailto:sellyoak@direct-housing.co.uk) [lettings@direct-housing.co.uk](mailto:lettings@direct-housing.co.uk) [accounts@direct-housing.co.uk](mailto:accounts@direct-housing.co.uk)

