



## 30 Watermill Close

Birmingham, B29 6TS

2024-25 £94 pppw including ALL BILLS!!

4 bedroom student property located in a nice residential area. There is one double room and 3 single rooms. The rooms however have been kitted out to maximize on space and storage. Recently refurbished, the property comprises of an open plan kitchen/diner/lounge with modern furnishings throughout. The kitchen is fully equipped with a range of appliances including washing machine and tumble dryer. Private garden to the rear perfect for barbecues in the summer. Street parking available.

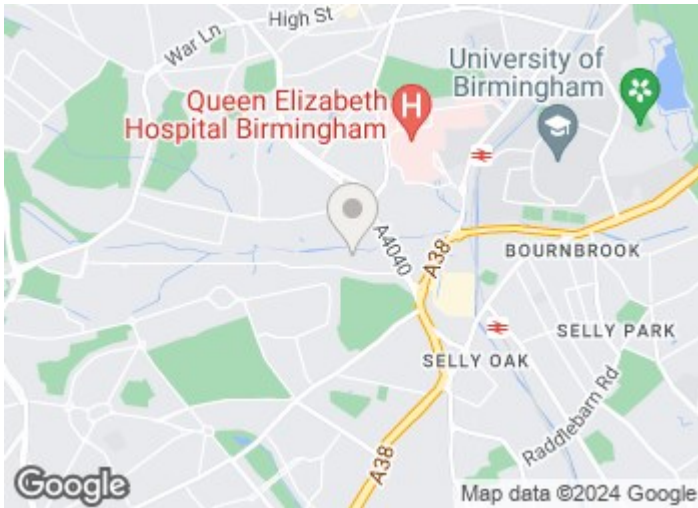
EPC rating: C Council Tax band: C (students exempt)

Term: 12 months Deposit: £470 per person

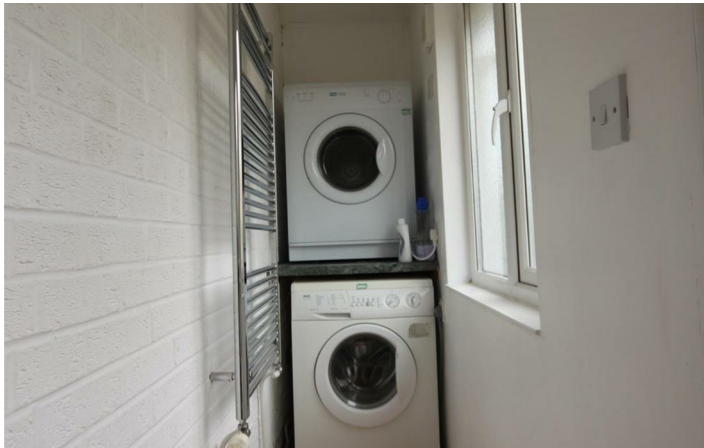
**£376 Per Week**

# 30 Watermill Close

Birmingham, B29 6TS

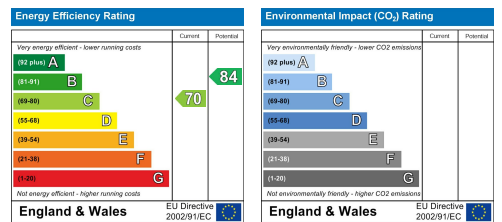


[Directions](#)



# Floor Plan

These particulars, whilst believed to be accurate are set out as a general outline only for guidance and do not constitute any part of an offer or contract. Intending purchasers should not rely on them as statements of representation of fact, but must satisfy themselves by inspection or otherwise as to their accuracy. No person in this firm's employment has the authority to make or give any representation or warranty in respect of the property.



543 Bristol Road, Selly Oak, Birmingham B29 6AU. T: 0121 472 3331 Website: [www.direct-housing.co.uk](http://www.direct-housing.co.uk)  
 E-mail: [sellyoak@direct-housing.co.uk](mailto:sellyoak@direct-housing.co.uk) [lettings@direct-housing.co.uk](mailto:lettings@direct-housing.co.uk) [accounts@direct-housing.co.uk](mailto:accounts@direct-housing.co.uk)

