

290 Hubert Road Birmingham, B29 6EP

£540 per person per calendar month. Stunning 7 bed all en-suite property, all double bedrooms with large shower rooms. All bedrooms have TV's, and the property boasts a large kitchen and lounge area, brand new furniture including an enormous sofa suite. Gas central heating and double glazing. BRAND NEW REFURB! Will accept individual students, small groups, or a group of 7. Bills are not included.

EPC Rating: D Council Tax Band: B (students exempt)
Term: 12 months Deposit: £700.00 per person

£540 Per Month

290 Hubert Road

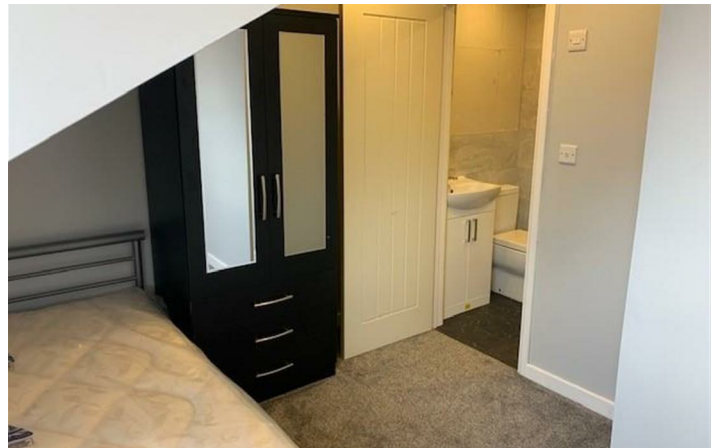
Birmingham, B29 6EP



£120 per person per week. Stunning 7 bed all en-suite property, all double bedrooms with large shower rooms. All bedrooms have TV's, and the property boasts a large kitchen and lounge area, brand new furniture including an enormous sofa suite. Gas central heating and double glazing. BRAND NEW REFURB! Will accept individual students, small groups, or a group of 7. Bills are not included.

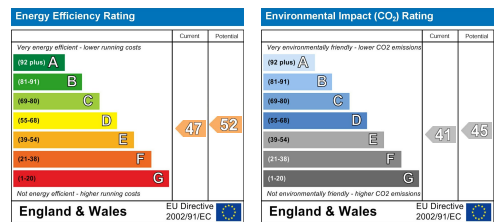


[Directions](#)



Floor Plan

These particulars, whilst believed to be accurate are set out as a general outline only for guidance and do not constitute any part of an offer or contract. Intending purchasers should not rely on them as statements of representation of fact, but must satisfy themselves by inspection or otherwise as to their accuracy. No person in this firm's employment has the authority to make or give any representation or warranty in respect of the property.



543 Bristol Road, Selly Oak, Birmingham B29 6AU. T: 0121 472 3331 Website: www.direct-housing.co.uk
 E-mail: sellyoak@direct-housing.co.uk lettings@direct-housing.co.uk accounts@direct-housing.co.uk

