



## 14 Ilmington Road Birmingham, B29 5LJ

3 x1 £85pppw Available 1st September!

This house is located in a nice peaceful residential area, offered fully furnished with front private parking space and back paved patio garden with garden furniture and a barbecue.

Fully furnished. 3 good sized double bedrooms, each to contain: wardrobes, chest drawers, bedside table and drawers, drawers underneath the bed, study desk with cupboards or drawers, study lamp, office chair, air dryer, long mirror, bin.

EPC Rating: D Council Tax Band: B (students exempt)

Term: 12 months Deposit: £425.00 per person

**£255 Per Week**

# 14 Ilmington Road

Birmingham, B29 5LJ



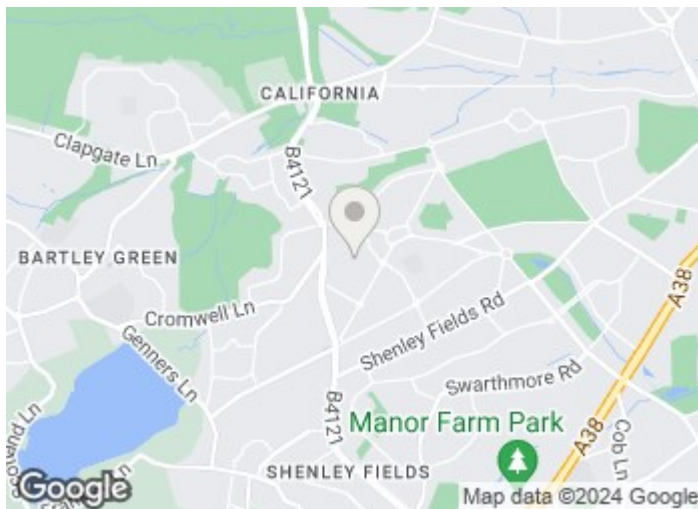
Available to students or working professionals from 1st Sept.

This house is located in a nice peaceful residential area, offered fully furnished with front private parking space and back paved patio garden with garden furniture and a barbecue.

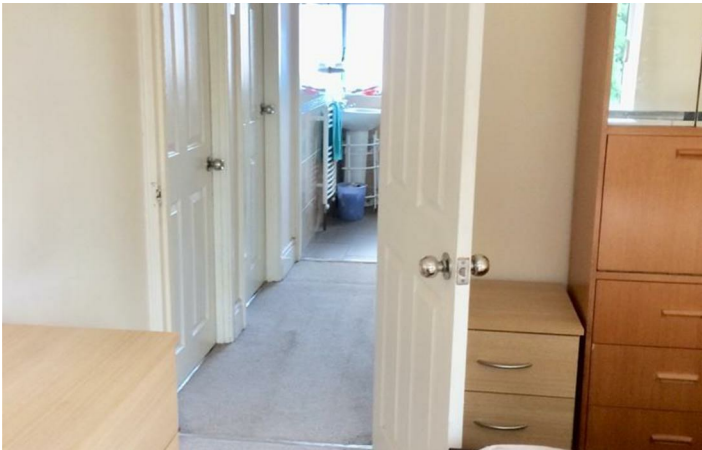
Rent: 2 x £295pcm and 1 x £269pcm.

Fully furnished. 3 good sized double bedrooms, each to contain:

wardrobes, chest drawers, bedside table and drawers, drawers underneath the bed, study desk with cupboards or drawers, study lamp, office chair, air dryer, long mirror, bin.

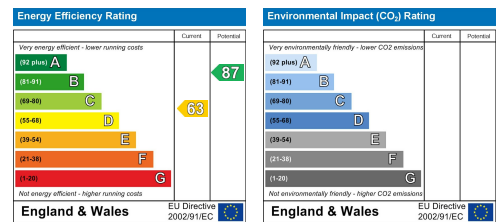


[Directions](#)



# Floor Plan

These particulars, whilst believed to be accurate are set out as a general outline only for guidance and do not constitute any part of an offer or contract. Intending purchasers should not rely on them as statements of representation of fact, but must satisfy themselves by inspection or otherwise as to their accuracy. No person in this firm's employment has the authority to make or give any representation or warranty in respect of the property.



543 Bristol Road, Selly Oak, Birmingham B29 6AU. T: 0121 472 3331 Website: [www.direct-housing.co.uk](http://www.direct-housing.co.uk)  
E-mail: [sellyoak@direct-housing.co.uk](mailto:sellyoak@direct-housing.co.uk) [lettings@direct-housing.co.uk](mailto:lettings@direct-housing.co.uk) [accounts@direct-housing.co.uk](mailto:accounts@direct-housing.co.uk)

