

4a Fairgreen Way Birmingham, B29 6EW

A great opportunity to purchase a Four Double Bedroomed Student House, giving an investor all the benefits of buying a Modern up to date Property. Near Birmingham University.

Four Double bedrooms, three with built in wardrobes. All fully furnished with great modern quality furnishings and light fixtures in all rooms. Open plan living / kitchen with all appliances including electric built in oven, glass hob, extractor hood, fridge freezer and washing machine. Super contemporary living decorated to a high standard. 2 modern shower rooms with white sanitary ware and extractors. Feature modern metal clad stairs with plate glass balustrade top.

Good quality laminate flooring and carpets/curtains to all rooms. Upvc windows, doors, soffits / fascias. Gas central heating throughout (Combi boiler). Maintenance free gravel gardens including large private back garden with rear gated access.

A great opportunity to purchase a modern house in a desirable location close to public transport and railway station. Potential to extend.

Fully compliant with gas safety, EICR electrical certificate, fire detection, fire doors, EPC rating C
New HMO licence granted Jan 2024.

Asking Price £399,950

4a Fairgreen Way

Birmingham, B29 6EW



- Property Reduced by £25,000
- Open plan kitchen / living space 4 Double bedrooms
- UPVC double glazed windows, doors, soffits / fascias
- 24 Years of consecutive student lettings
- Let until 30th June 2025
- Near to the University of Birmingham
- Modern fully furnished throughout
- Low maintenance gardens
- Combination boiler gas central heating
- Rent of c£26000 p.a.

Kitchen/Lounge

14'11" x 15'3" (4.57 x 4.66)

Bedroom 1

9'4" x 8'7" (2.87 x 2.64)

Ground floor shower room

2'11" x 8'0" (0.91 x 2.46)

First floor shower room

8'0" x 5'6" (2.44 x 1.68)

Landing

7'11" x 10'11" (2.43 x 3.33)

Bedroom 2

11'0" x 9'2" (3.36 x 2.80)

Bedroom 3

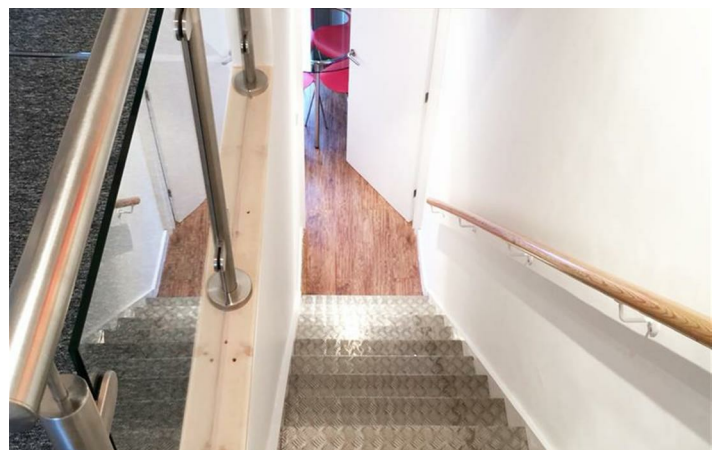
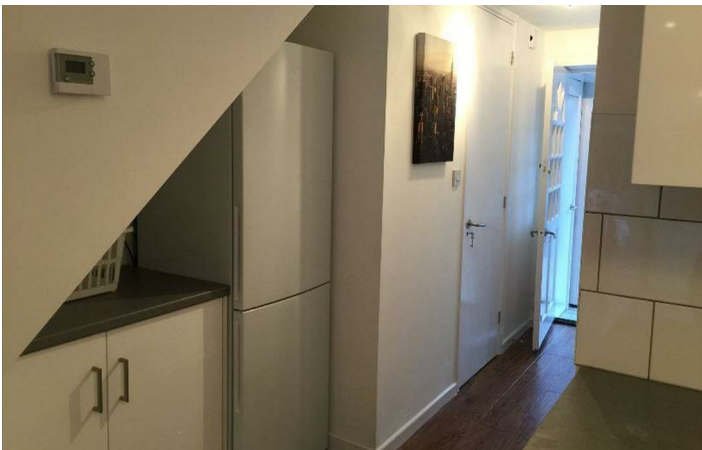
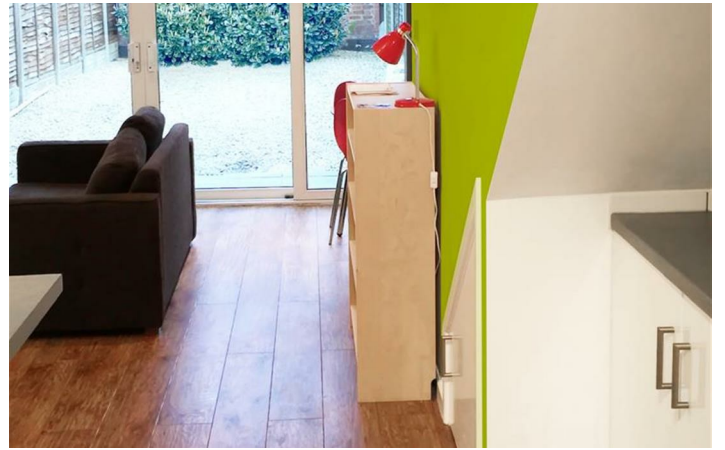
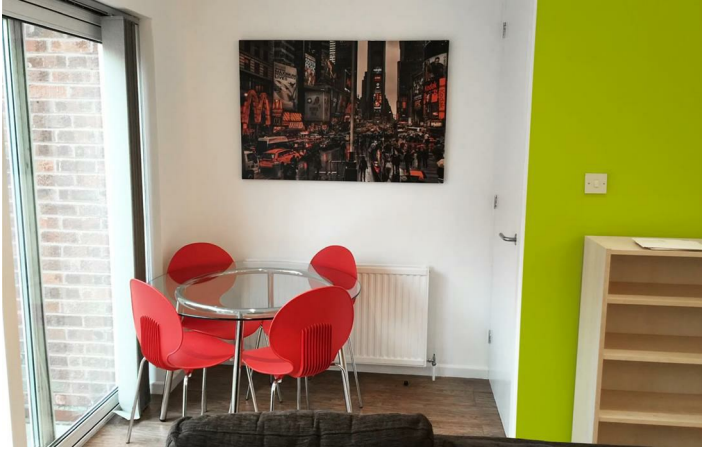
7'4" x 14'1" (2.25 x 4.30)

Bedroom 4

7'11" x 11'4" (2.43 x 3.47)

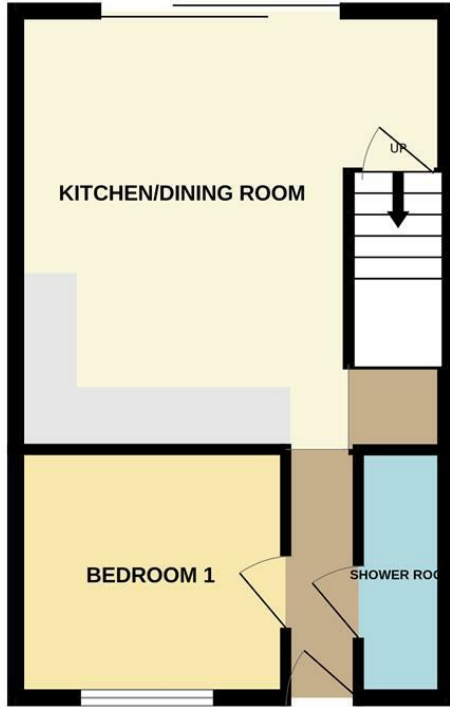


[Directions](#)



Floor Plan

GROUND FLOOR

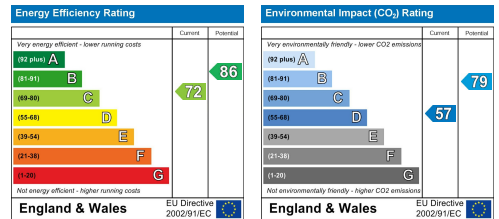


1ST FLOOR



Whilst every attempt has been made to ensure the accuracy of the floorplan contained here, measurements of doors, windows, rooms and any other items are approximate and no responsibility is taken for any error, omission or mis-statement. This plan is for illustrative purposes only and should be used as such by any prospective purchaser. The services, systems and appliances shown have not been tested and no guarantee as to their operability or efficiency can be given.
Made with Metropix ©2023

These particulars, whilst believed to be accurate are set out as a general outline only for guidance and do not constitute any part of an offer or contract. Intending purchasers should not rely on them as statements of representation of fact, but must satisfy themselves by inspection or otherwise as to their accuracy. No person in this firm's employment has the authority to make or give any representation or warranty in respect of the property.



543 Bristol Road, Selly Oak, Birmingham B29 6AU. T: 0121 472 3331 Website: www.direct-housing.co.uk
E-mail: sellyoak@direct-housing.co.uk lettings@direct-housing.co.uk accounts@direct-housing.co.uk

