



27 Summerfield Crescent

Birmingham, B16 0EL

2024 - 2025 £130pppw for a group of 4.

Stunning 4 bedroom property with extra spare room! In a fantastic location, available to a group of students or working professionals. This property boasts a large modern fitted kitchen with appliances, and a spacious comfortable living room. 5 Bedrooms - 4 double and 1 single with an en-suite shower room. This property has been very well maintained, and offers a large garden with a paved patio area. A must-see property!

EPC Rating - E Council Tax band - B (students exempt)

Term - 12 months Deposit - £550.00

£520 Per Week

27 Summerfield Crescent

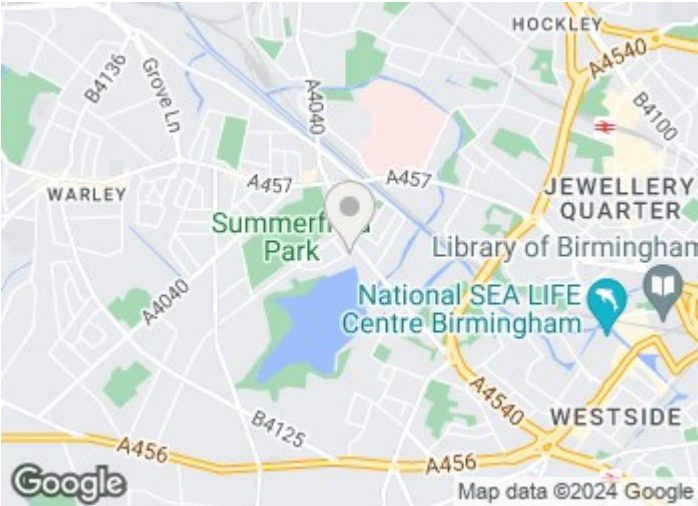
Birmingham, B16 0EL

 4

 2

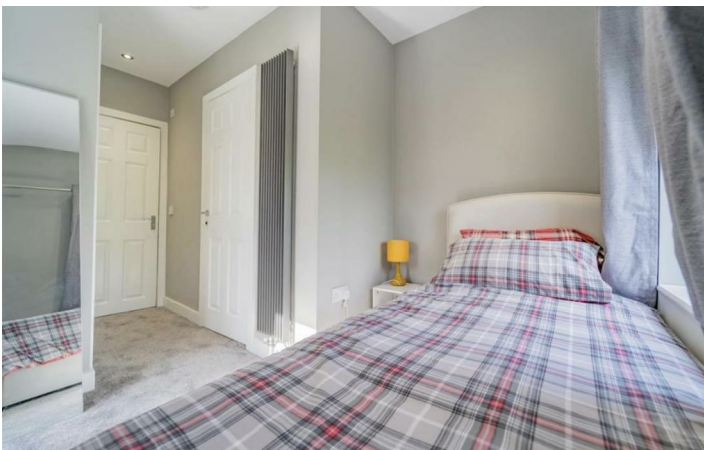
 1

 E



[Directions](#)

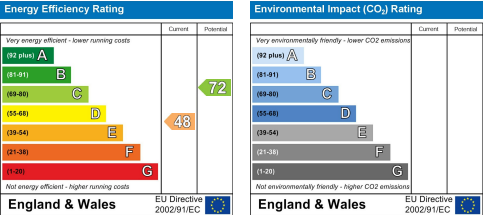






Floor Plan

These particulars, whilst believed to be accurate are set out as a general outline only for guidance and do not constitute any part of an offer or contract. Intending purchasers should not rely on them as statements of representation of fact, but must satisfy themselves by inspection or otherwise as to their accuracy. No person in this firms employment has the authority to make or give any representation or warranty in respect of the property.



543 Bristol Road, Selly Oak, Birmingham B29 6AU. T: 0121 472 3331 Website: www.direct-housing.co.uk
E-mail: sellyoak@direct-housing.co.uk lettings@direct-housing.co.uk accounts@direct-housing.co.uk

