

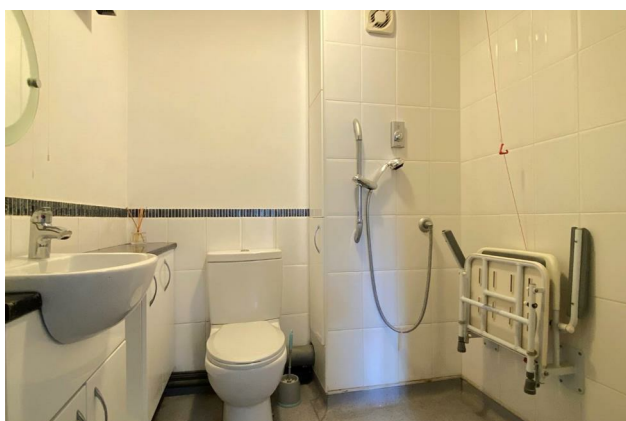
HUNTERS®

HERE TO GET *you* THERE

Flat 31, Regents Court West Street, Gravesend, DA11 0BT

Offers Over £90,000

Property Images



HUNTERS[®]

HERE TO GET *you* THERE

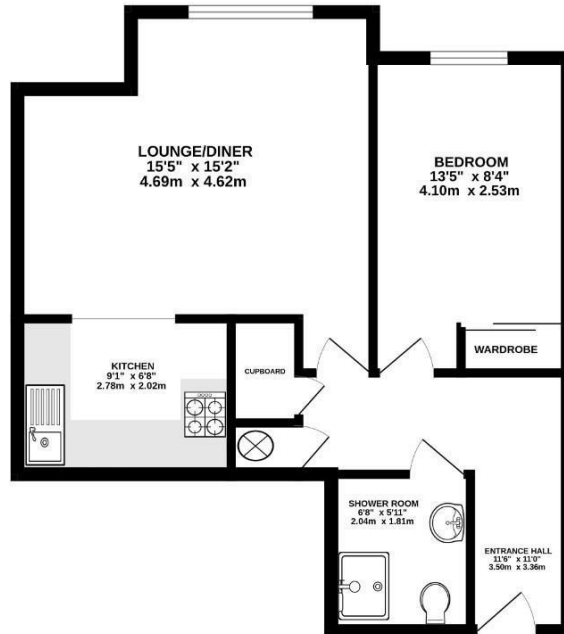
Property Images



HUNTERS®

HERE TO GET *you* THERE

GROUND FLOOR
498 sq.ft. (46.3 sq.m.) approx.

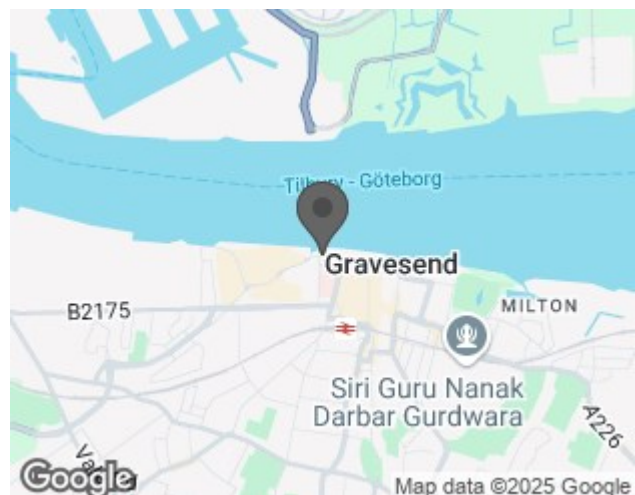


TOTAL FLOOR AREA : 498 sq. ft. (46.3 sq.m.) approx.
Whilst every attempt has been made to ensure the accuracy of the floorplan contained herein, measurements of doors, windows, rooms and any other items are approximate and no responsibility is taken for any error, omission or mis-statement. This plan is for illustrative purposes only and should be used as such by any prospective purchaser. The services, systems and appliances shown have not been tested and no guarantee as to their operability or efficiency can be given.
Made with floorplan 50024

EPC

| Energy Efficiency Rating | | |
|---|----------------------------|-----------|
| | Current | Potential |
| Very energy efficient - lower running costs | | |
| (92 plus) A | | |
| (81-91) B | | |
| (69-80) C | | |
| (55-68) D | | |
| (39-54) E | | |
| (21-38) F | | |
| (1-20) G | | |
| Not energy efficient - higher running costs | | |
| England & Wales | EU Directive 2002/91/EC | |

Map



Details

Type: Retirement Property Beds: 1 Bathrooms: 1 Receptions: 1
Tenure: Leasehold

Now available with NO FORWARD CHAIN, is this one bedroom retirement apartment for over 55's only!

The apartment is located on the Regents Court complex on West Street, Gravesend and comprises of entrance hall, lounge/diner, bedroom, bathroom and kitchen area.

The Complex has its own Laundry Room for use, as well as a secured, private car park and communal lounge area for the residents.

Gravesend Town Centre is a short walk from the property which has an array of shops and amenities.

Call now to arrange your viewing!

Features

• RETIREMENT APARTMENT • ONE BEDROOM • NO FORWARD CHAIN • SECURED CAR PARK • CLOSE TO TOWN CENTRE • EPC RATING- C