

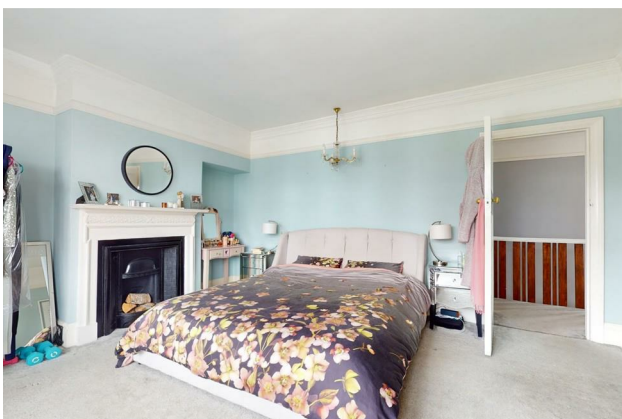
# HUNTERS®

HERE TO GET *you* THERE

**32 Sun Lane, Gravesend, DA12 5HG**

**Guide Price £700,000-£750,000**

**Property Images**





# HUNTERS®

HERE TO GET *you* THERE

## Property Images



# HUNTERS®

HERE TO GET *you* THERE

## Property Images



# HUNTERS®

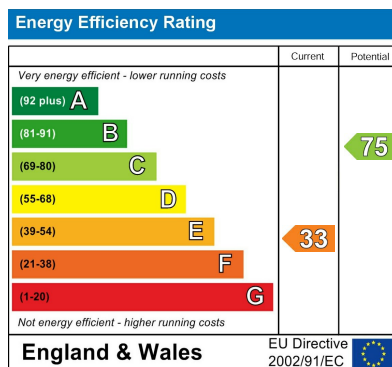
HERE TO GET *you* THERE



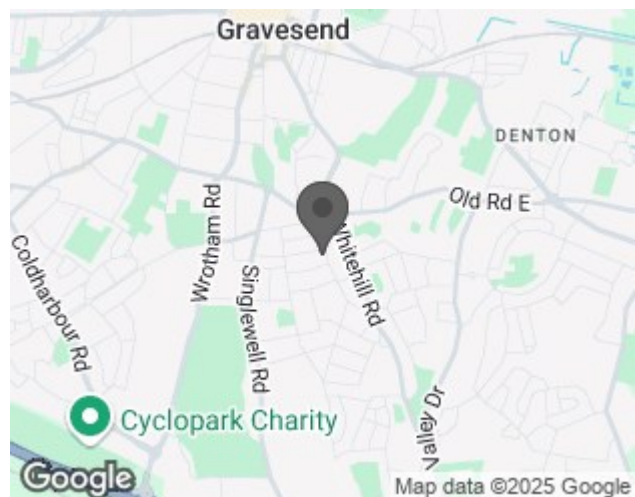
GROSS INTERNAL AREA  
FLOOR 1 114.7 m<sup>2</sup> (1,234 sq.ft.) FLOOR 2 69.2 m<sup>2</sup> (745 sq.ft.)  
TOTAL : 183.8 m<sup>2</sup> (1,979 sq.ft.)  
SIZES AND DIMENSIONS ARE APPROXIMATE, ACTUAL MAY VARY.



## EPC



## Map



## Details

Type: House - Semi-Detached Beds: 5 Bathrooms: 2 Reception: 2 Tenure: Freehold

## Summary

GUIDE PRICE £700,000-£750,000.

Welcome to Sun Lane, Gravesend - a charming house perfect for a family. This beautifully appointed house offers a fabulous space with five bedrooms. The extended semi-detached character home boasts not just one, but two bathrooms, ensuring convenience for all.

The highlight of this property is the beautifully appointed kitchen, perfect for whipping up delicious meals. With a separate reception room with a log burner to make cold winter nights nice and cosy. This house offers ample space for entertaining guests or simply relaxing after a long day.

Imagine the possibilities in this spacious family home - from cosy family gatherings to peaceful evenings in your own sanctuary. Don't miss out on the opportunity to make this house your dream home.

## Features

- CHARACTER HOME • EXTENDED SEMI DETACHED HOUSE • FIVE BEDROOMS • TWO BATHROOMS • LAUNDRY ROOM • REAR GARDEN WITH FABULOUS PATIO • BLOCK PAVED DRIVEWAY TO FRONT • VIEWING HIGHLY RECOMMENDED • EPC RATING F