

HUNTERS®

HERE TO GET *you* THERE

15 Highwood Close, Higham, ME3 7BQ

Offers In Excess Of £425,000

Property Images



HUNTERS®

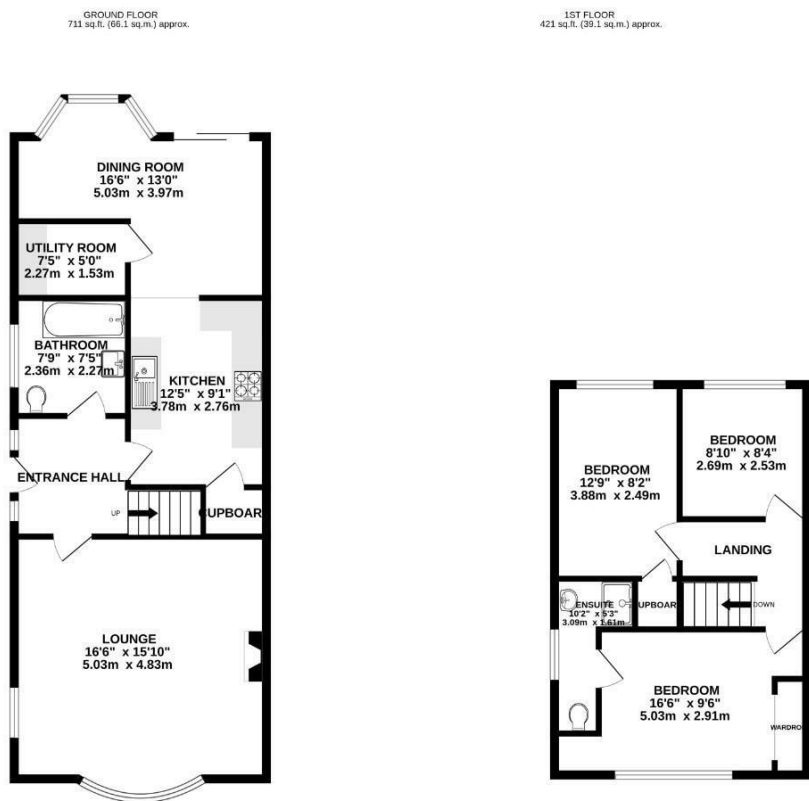
HERE TO GET *you* THERE

Property Images



HUNTERS®

HERE TO GET *you* THERE

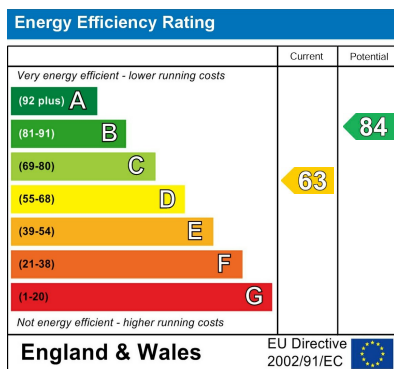


TOTAL FLOOR AREA: 1132 sq.ft. (105.2 sq.m.) approx.

Whilst every attempt has been made to ensure the accuracy of the floorplan contained here, measurements of items, fixtures, fittings and any other items are approximate and no responsibility is taken for any error, omission or misstatement. This plan is for illustrative purposes only and should be used as such by any prospective purchaser. The services, systems and appliances shown have not been tested and no guarantee as to their operability or efficiency can be given.

Made with Metropix C200.

EPC



Map



Details

Type: House - Semi-Detached Beds: 3 Bathrooms: 2 Receptions: 1 Tenure: Freehold

Summary

Situated in the popular village of Higham we now pleased to offer a beautifully presented three bedroom extended semi detached family home which is ready for any prospective purchaser to move straight into!

This home comprises of entrance hall with a spacious lounge, kitchen/diner, family bathroom as well as utility room.

The first floor boasts three bedrooms with the main bedroom being equipped with an en-suite shower room.

Externally, there is pathway leading to the front of the property with a gate for side access into the garden. Here you'll find a patio area coupled with laid to lawn and garage en bloc to rear.

Book yourself a viewing to truly appreciate what this home has to offer!

Features

- SEMI DETACHED FAMILY HOME • SPACIOUS LOUNGE • KITCHEN/DINER • THREE BEDROOMS • FAMILY BATHROOM • EN SUITE TO MAIN BEDROOM • BEAUTIFULLY PRESENTED THROUGHOUT • UTILITY ROOM • GARAGE EN BLOC • EPC RATING D