

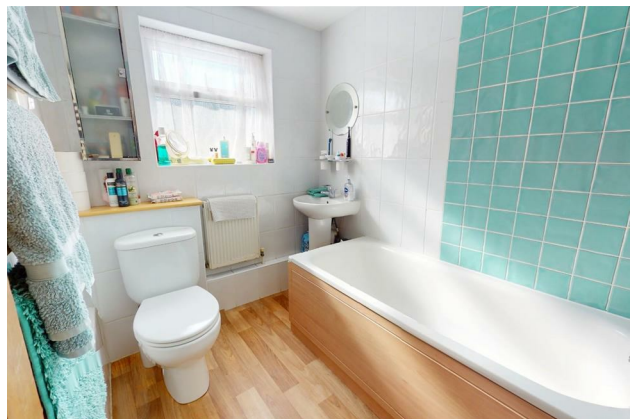
HUNTERS®

HERE TO GET *you* THERE

3 Seymour Road, Northfleet, Gravesend, DA11 7BW

Guide Price £300,000

Property Images



HUNTERS[®]

HERE TO GET *you* THERE

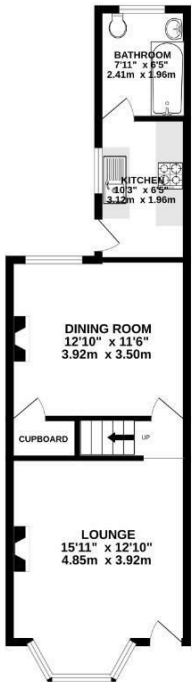
Property Images



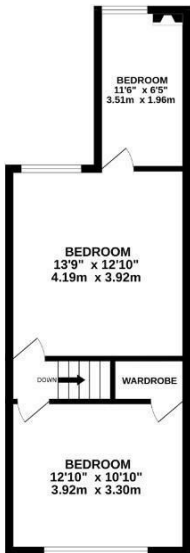
HUNTERS®

HERE TO GET *you* THERE

GROUND FLOOR
481 sq.ft. (44.6 sq.m.) approx.




1ST FLOOR
428 sq.ft. (39.6 sq.m.) approx.



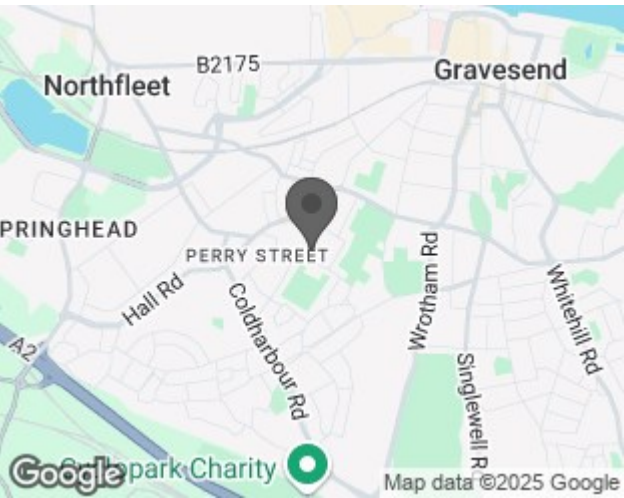
TOTAL FLOOR AREA: 909 sq.ft. (84.4 sq.m.) approx.

Whilst every attempt has been made to ensure the accuracy of the floorplan contained herein, measurements of areas, volumes, levels and any other items are approximate and no responsibility is taken for any error, omission or misstatement. This plan is for illustrative purposes only and should be used as such by any prospective purchaser. The services, systems and appliances shown have not been tested and no guarantee as to their operability or efficiency can be given.
Made with floorplan 3D025.

EPC

Energy Efficiency Rating		
	Current	Potential
Very energy efficient - lower running costs		
(92 plus) A		86
(81-91) B		
(69-80) C		
(55-68) D	62	
(39-54) E		
(21-38) F		
(1-20) G		
Not energy efficient - higher running costs		
England & Wales		EU Directive 2002/91/EC 

Map



Details

Type: House - Terraced Beds: 3 Bathrooms: 1 Reception: 1 Tenure: Freehold

Summary

GUIDE PRICE £300,000-£310,000.

We are delighted to offer for sale this three bedroom terraced home located on Seymour Road.

The property is ideally situated to benefit from all the amenities that Gravesend, Ebbsfleet and Northfleet have to offer with an array of local shops, takeaways and a bakery.

Inside consists of lounge, dining, kitchen and family bathroom. Whilst the first floor boasts two double bedrooms with the third bedroom off the main bedroom.

Externally, there is a SOUTH FACING rear garden making this a nice sun trap in the summer! There's a good amount amount of space with a patio area, laid to lawn and gate for rear access.

If you're looking to get onto the property ladder then this would be an ideal first time purchase for any prospective buyer.

Call now to arrange a viewing.

Features

• TERRACE • LOUNGE • KITCHEN • DINING ROOM • THREE
BEDROOMS • BATHROOM • GARDEN • SOUTH FACING REAR GARDEN • EPC RATING
D