

# HUNTERS®

HERE TO GET *you* THERE

**17 Kiln Way, Halling, Rochester, ME2 1FP**

**Guide Price £400,000-£425,000**

**Property Images**



# HUNTERS®

HERE TO GET *you* THERE

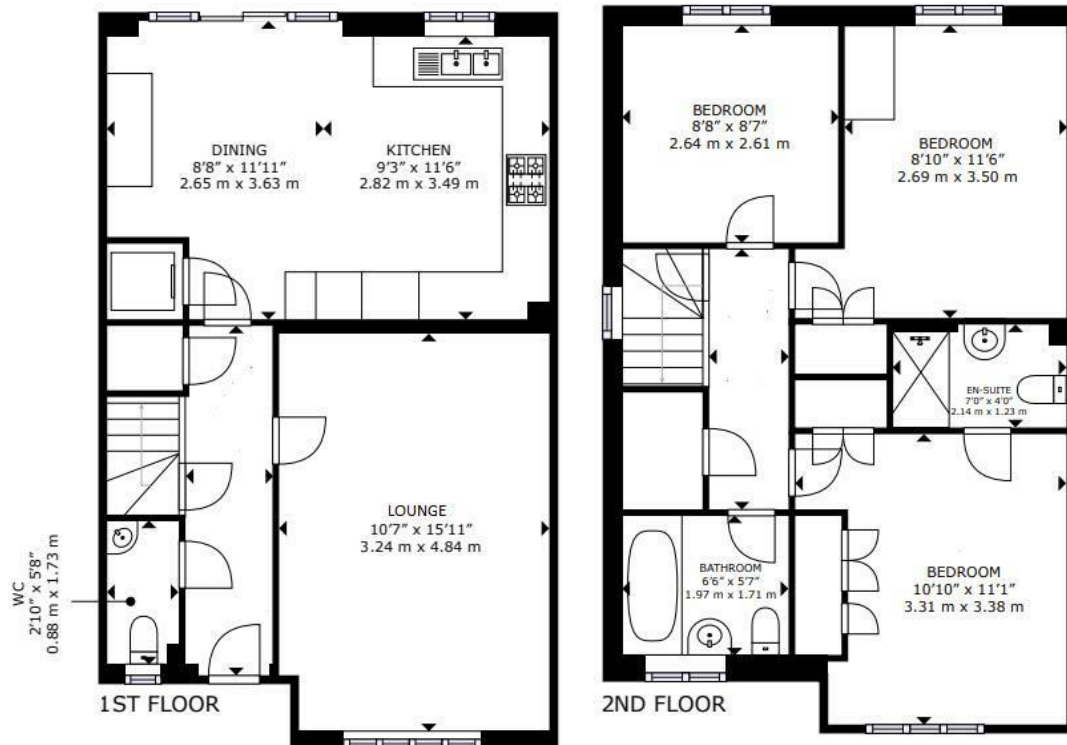
## Property Images





# HUNTERS®

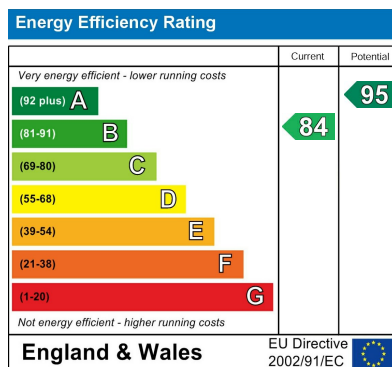
HERE TO GET *you* THERE



GROSS INTERNAL AREA  
 1ST FLOOR: 468 sq. ft. 43 m<sup>2</sup>  
 2ND FLOOR: 477 sq. ft. 44 m<sup>2</sup>  
 REDUCED HEADROOM BELOW  
 1.84 m. 20 sq. ft. TOTAL: 945 sq. ft. 87 m<sup>2</sup>  
SIZES AND DIMENSIONS ARE APPROXIMATE, ACTUAL MAY VARY.

Matterport

## EPC



## Map



## Details

Type: House - Semi-Detached Beds: 3 Bathrooms: 2 Reception: 1 Tenure: Freehold

## Summary

GUIDE PRICE £400,000-£425,000.

Hunters are delighted to bring to the market a very well appointed three bedroom, semi detached, family home, located on the popular St Andrews Park development in Halling, offering NO FORWARD CHAIN.

The property consists of entrance hall, downstairs WC, lounge, kitchen/diner, and stairs to the three bedrooms, with en-suite to main bedroom and family bathroom.

Externally, the rear garden provides side access as well as laid to lawn and pathway. To the front there is parking via the driveway and garage.

This a property that you do not want to miss out on, so call now to arrange your viewing.

## Features

• SEMI DETACHED • THREE BEDROOMS • KITCHEN/DINER • LOUNGE • DOWNSTAIRS WC • CHAIN FREE • GARDEN TO REAR • DRIVEWAY • GARAGE • EPC RATING- B