

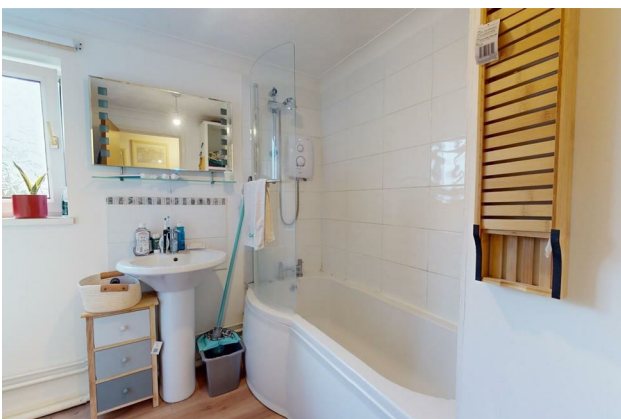
HUNTERS®

HERE TO GET *you* THERE

Flat 6, 20, Wycliffe House Old Road East, Gravesend, DA12 1NQ

Guide Price £210,000-£220,000

Property Images



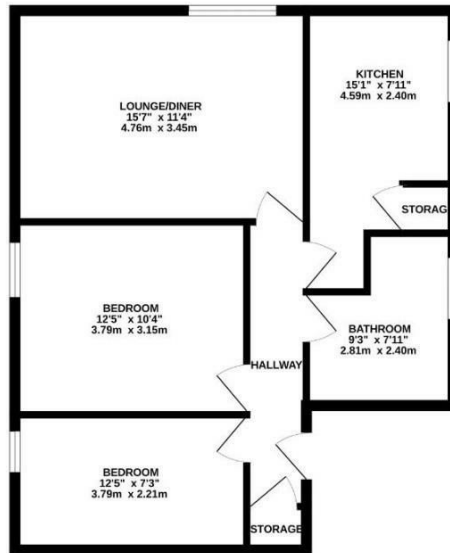
HUNTERS[®]

HERE TO GET *you* THERE

Property Images



618 sq.ft. (57.4 sq.m.) approx.



EPC

Energy Efficiency Rating		Current	Potential
Very energy efficient - lower running costs			
(92 plus) A			
(81-91) B		77	82
(69-80) C			
(55-68) D			
(39-54) E			
(21-38) F			
(1-20) G			
Not energy efficient - higher running costs			
England & Wales		EU Directive 2002/91/EC	

Map



Details

Type: Flat Beds: 2 Bathrooms: 1 Receptions: 1 Tenure: Leasehold

Summary

GUIDE PRICE £210,000-£220,000.

Welcome to this two bedroom flat located on Old Road East in Gravesend! The property boasts a well presented interior with one plan living/dining area, two bedrooms, kitchen, storage cupboard and bathroom.

The inviting reception room provides a warm and welcoming space to relax whilst the two bedrooms offer ample space. Additionally, the property comes with one allocated parking space as well as a communal storage area within the block.

Located just 0.8 miles from the the town centre means you'll have great access to a variety of amenities, including shops, restaurants, bus services and the Gravesend Mainline Railway Station offering fast services into London, making this ideal for those looking to commute!

Don't miss out on the opportunity to make this lovely flat your new home. With its prime location and charming features, this property would make a fantastic first time purchase!

Contact us today to arrange an immediate viewing!

Features

- TWO BEDROOMS • OPEN PLAN LIVING AREA • KITCHEN • BATHROOM • ONE ALLOCATED PARKING SPACE • WELL PRESENTED • CLOSE TO TOWN CENTRE • PURPOSE BUILT • EPC RATING C