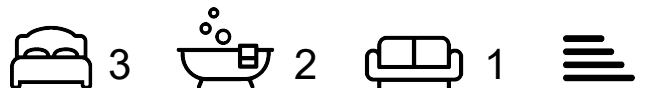




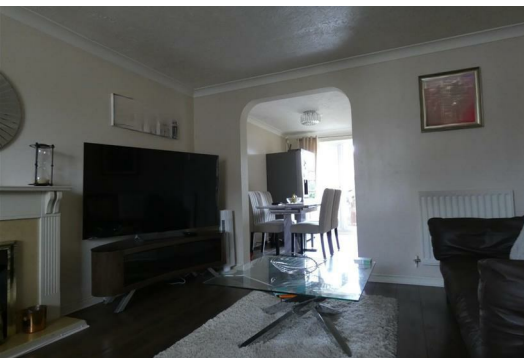
Marsh View

Gravesend, DA12 2LZ

£1,750 Per Month



Three bedroom detached house offering spacious accommodation and comprising of a reception room, fitted kitchen with built in oven and hob and a cloakroom. Main bedroom with en-suite shower to the first floor, two further bedrooms and a family bathroom. Good size rear garden, garage and driveway offering off road parking. The property is located in a sought after location and currently available towards the end of October.



Area Map



Floor Plans



Energy Efficiency Graph



These particulars are intended to give a fair and reliable description of the property but no responsibility for any inaccuracy or error can be accepted and do not constitute an offer or contract. We have not tested any services or appliances (including central heating if fitted) referred to in these particulars and the purchasers are advised to satisfy themselves as to the working order and condition. If a property is unoccupied at any time there may be reconnection charges for any switched off/disconnected or drained services or appliances - All measurements are approximate. **THINKING OF SELLING?** If you are thinking of selling your home or just curious to discover the value of your property, Hunters would be pleased to provide free, no obligation sales and marketing advice. Even if your home is outside the area covered by our local offices we can arrange a Market Appraisal through our national network of Hunters estate agents.